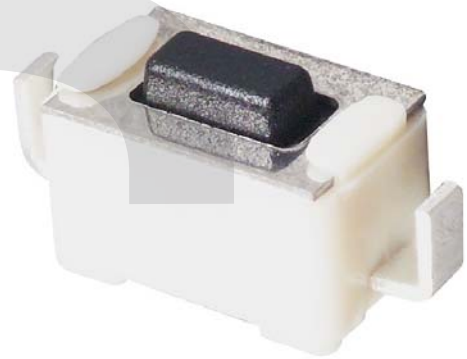


## Tact Switch Series

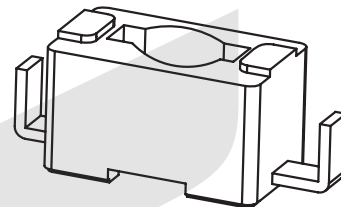
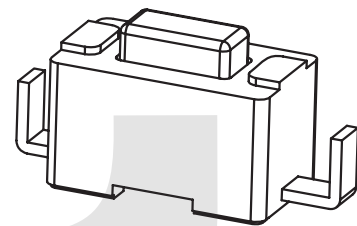
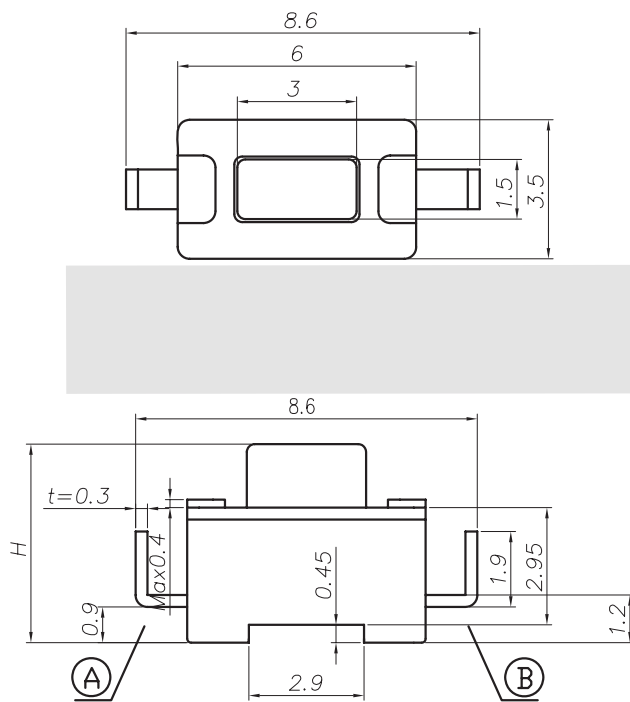
### KLS7-TS3612 3x6 Tact Switch Series

#### ELECTRICAL

1. Rating: 20mA 12Vdc
2. Contact Resistance : 50mΩ Max.
3. Insulation Resistance: 100MΩ Min.
4. Dielectric Strength : AC250V(50/60Hz for 1minute)
5. Electrically Life: 100, 000cycles
6. Environment temperature: -25°C~+70°C
7. Operating Force: 160/250(±30gf)
8. Seal temperature: 260°C~ 280°C



#### Dimension (unit: mm)



SCHEMATIC

H
4.3
5.0

## ORDER INFORMATION

**KLS7-TS3612 -4.3-160 -B**

Series No. \_\_\_\_\_ Packing: B-Bulk  
 Hight: 4.3mm/5.0mm \_\_\_\_\_ Operating Force :160~250gf