

Stereo Jack Series

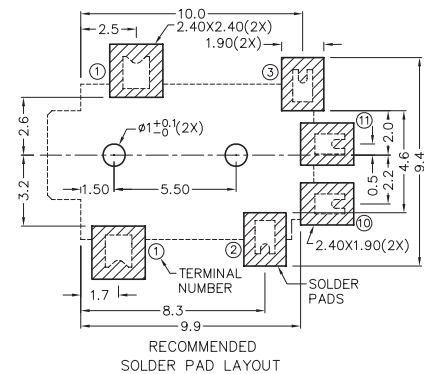
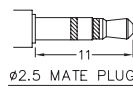
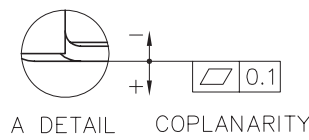
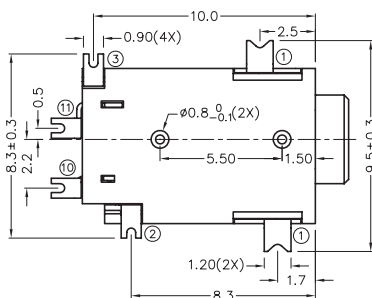
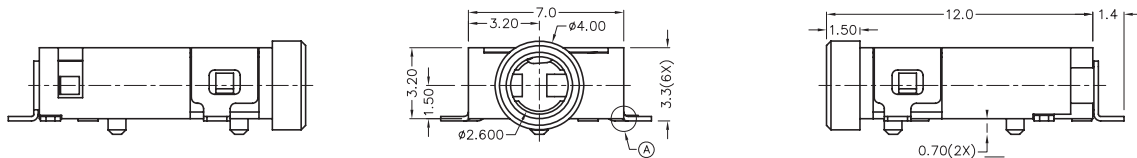
KLS1-TPJ2.5-006 (SMD Stereo Jack)

Technical parameters:

Rated voltage: DC 30 V
 Rated current: 0.5 A
 Contact resistance: 0.03Ω, max
 Insulation resistance: 100MΩ, min
 Pressure: AC500V (50Hz) / 1minute
 Insertion Force :2-20 N
 Life: 50000 times
 Operating Temperature:-30°C ~ 70°C

Material:

Terminal 1 :Copper Alloy
 Terminal 2 : Copper Alloy
 Terminal 3 : Copper Alloy
 Terminal10 : Brass
 Terminal11 : Brass
 Housing : PA6T



MODEL NO.	TPJ2.5-006	TPJ2.5-006A	TPJ2.5-006B	TPJ2.5-006C	TPJ2.5-006D
SCHEMATIC					

ORDER INFORMATION

Product NO.: KLS1-TPJ2.5-006 A

