

## Stereo Jack Series

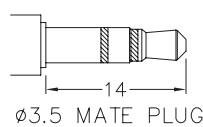
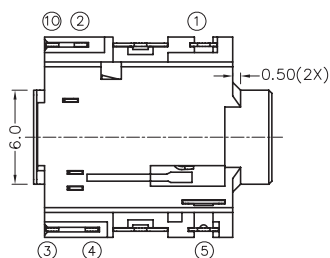
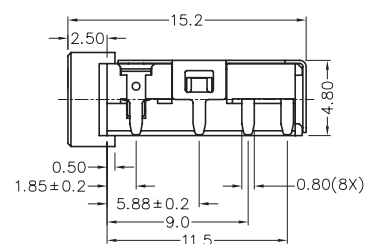
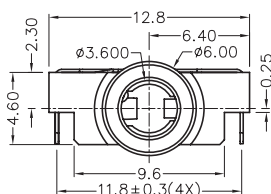
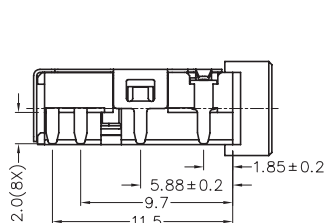
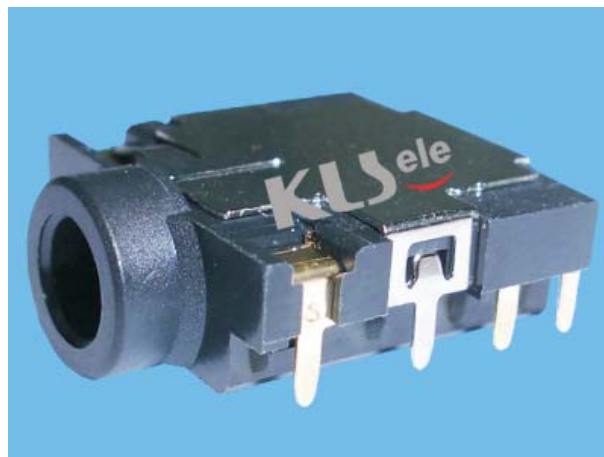
### KLS1-TPJ3.5-012 (SMD Stereo Jack)

#### Technical parameters:

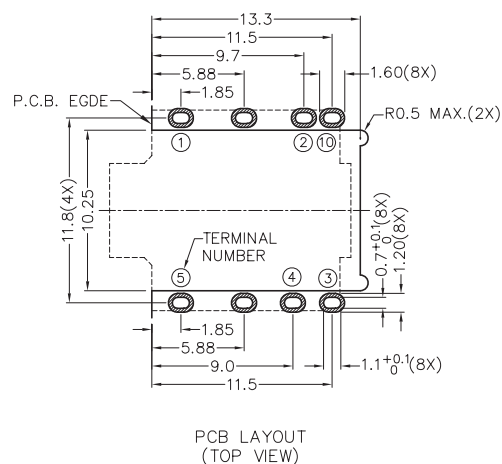
Rated voltage: DC 30 V  
 Rated current: 0.5 A  
 Contact resistance: 0.03Ω, max  
 Insulation resistance: 100MΩ, min  
 Pressure: AC500V (50Hz) / 1minute  
 Insertion Force :2-20 N  
 Life: 50000 times  
 Operating Temperature:-30°C ~ 70°C

#### Material:

Terminal 1 : Copper Alloy  
 Terminal 2 : Copper Alloy  
 Terminal 3 : Copper Alloy  
 Terminal 4 : Copper Alloy  
 Terminal 5 : Copper Alloy  
 Terminal 10 : Copper Alloy  
 Shield : Copper Alloy  
 Housing : PA6T



MODEL NO.	TPJ3.5-012
SCHEMATIC	○ SHIELDING
	○ 1
	○ 2
	○ 10
	○ 3
	○ 4
	○ 5



## ORDER INFORMATION

Product NO.: KLS1-TPJ3.5-012

Pos. NO. ———  
 3.5mm SMD Stereo Jack ———