

Stereo Jack Series

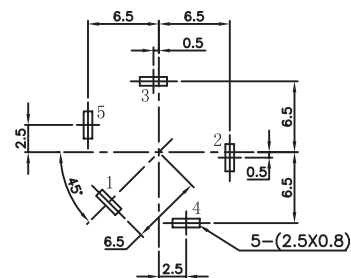
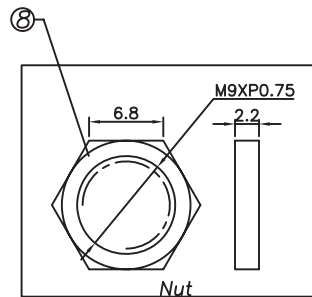
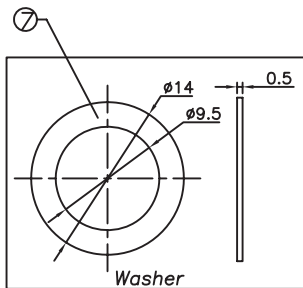
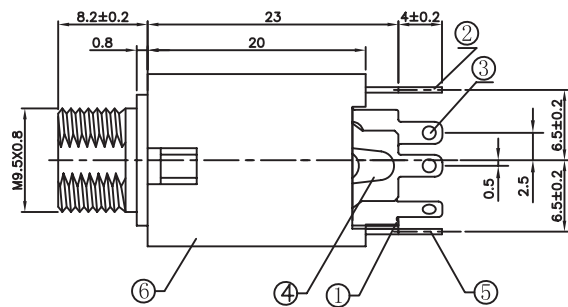
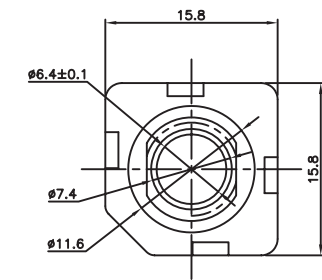
KLS1-TG6.3-004B (Stereo Jack Series)

Technical parameters:

Rated voltage: DC 30 V
 Rated current: 0.5 A
 Contact resistance: 0.03Ω, max
 Insulation resistance: 100MΩ, min
 Pressure: AC500V (50Hz) / 1minute
 Insertion Force :2-20 N
 Life: 50000 times
 Operating Temperature:-30°C ~ 70°C

Material:

WASHER :IRON
 HOUSING :PA66
 CURVE PIECE/ NUT : C2680
 CONTACT FOOT/ SPRING : C5191



T:1.6 Dimensions of PC board holes
 Tolerance : ±0.1(Printed-top view)

SCHEMATIC					
TG6.3-004B	TG6.3-004BA	TG6.3-004BB	TG6.3-004BC	TG6.3-004BD	TG6.3-004BE

UNLESS OTHERWISE SPECIFIED, TOLERANCE ON DECIMAL: ±0.3

ORDER INFORMATION

Product NO.: KLS1-TG6.3-004BA

