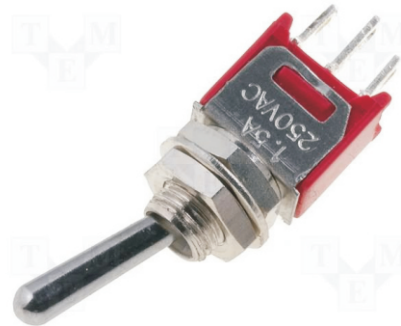


Toggle switches

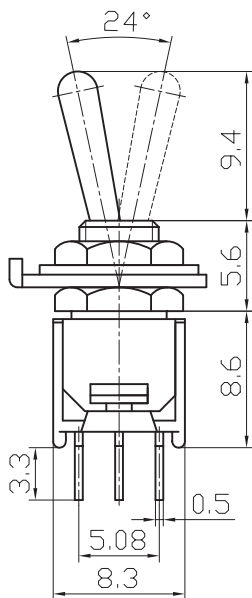
L-KLS7-SMS-103-A2 Sub-Miniature Toggle Switch

SPECIFICATIONS:

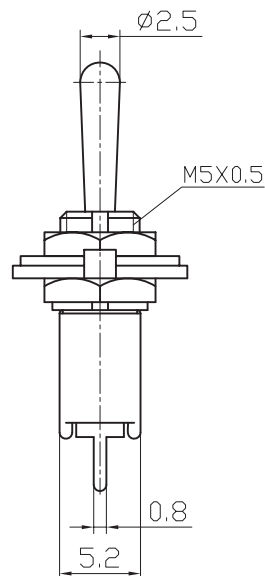
Rating: 3A 125VAC; 1.5A 250VAC
 Contact Resistance: 20mΩ max
 Insulation Resistance: 500V DC 1000MΩ Min
 Dielectric Strength: 1000V AC 1 Minute
 Operating Temperature: -25°C +85°C
 Electrical Life :10,000 cycles



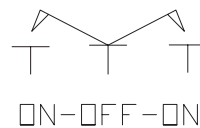
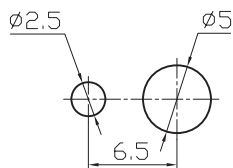
Outline Drawing



安装尺寸 (Mounting)



电路图 (Circuitry)



ORDER INFORMATION

L-KLS7-SMS-103-A2

