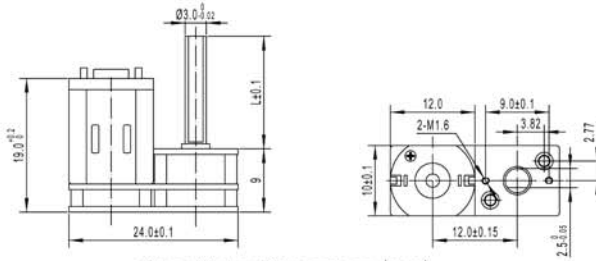


KLS23-GM24-N20VA 24X12mm gearbox plus N20 & N30 permanent magnet DC motor

- Small size dc gear motor with low speed and big torque
- 24 x 12mm gear motor provide 0.05Nm torque and more reliable
- Suitable to small diameter, low noise and big torque application
- Dc Gear motors can match encoder, 3ppr
- Reduction Ratio: 150、350、500



Gear Motor Dimensions (mm)



Motor Technical Data

Motor model No.	Rated voltage	No-load speed	No-load current	Rated speed	Rated torque	Rated current	Output power	Stall torque	Stall current
	VDC	r/min	mA	r/min	g.cm	mA	W	g.cm	A
TFF-N20VA-13110	2.4	14800	60	12000	2.5	200	0.31	13	1.20
TFF-N20VA-09220	5.0	14800	30	12000	2.5	120	0.31	13	0.52
TFF-N20VA-05430	12.0	16000	15	12500	3.0	60	0.35	13	0.25

Gear motor Technical Data

Gearbox with motor: GM24-350-N20VA-13110-XXX

	150	350	500						
Reduction ratio	150	350	500						
Length mm	9.0	9.0	9.0						
No-load speed rpm	96	42	30						
Rated speed rpm	80	34	25						
Rated torque kg.cm	0.21	0.44	0.5						
Max.momentary tolerance torque kg.cm	1.1	2.3	3.0						

Gearbox with motor

GM24-350-N20VA-09220-XXX

	150	350	500						
Reduction ratio	150	350	500						
Length mm	9.0	9.0	9.0						
No-load speed rpm	96	42	30						
Rated speed rpm	80	34	25						
Rated torque kg.cm	0.21	0.44	0.5						
Max.momentary tolerance torque kg.cm	1.1	2.3	3.0						

Gearbox with motor

GM24-350-N20VA-05430-XXX

	150	350	500						
Reduction ratio	150	350	500						
Length mm	9.0	9.0	9.0						
No-load speed rpm	105	45	32						
Rated speed rpm	83	35	27						
Rated torque kg.cm	0.25	0.5	0.5						
Max.momentary tolerance torque kg.cm	1.1	1.0	1.0						