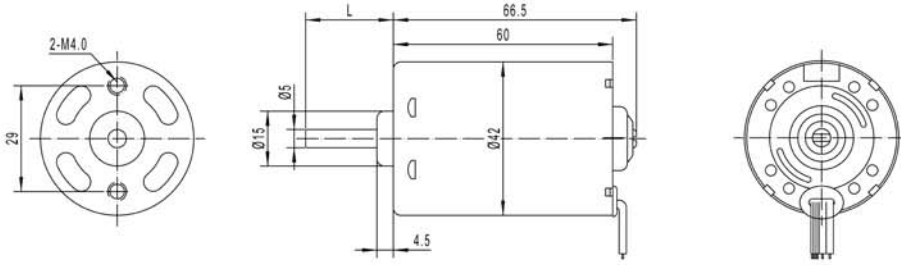


KLS23-TEC4260 42mm brushless motor

- Small size dc gear motor with low speed and big torque
- Suitable to small diameter, low noise and big torque application



Motor Dimensions (mm)



Motor Technical Data

Motor model No.	Rated voltage	No-load speed	No-load current	Rated speed	Rated torque	Rated current	Output power	Stall torque	Stall current
	VDC	r/min	mA	r/min	g.cm	mA	W	g.cm	A
TEC4260-1250	12	5100	400	4300	250	900	11	1500	3.0
TEC4260-2450	24	5100	200	4300	430	450	19	2700	3.0
TEC4260-3110	310	10000	80	8400	400	150	34	2500	4.0