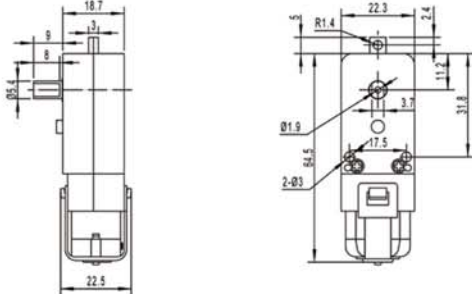


KLS23-TGP01S-A130 TGP plastic gears gearbox plus A130 permanent magnet DC motor

- Small size dc gear motor with low speed and big torque
- Suitable to small diameter, low noise and big torque application
- Reduction Ratio: 48、120、180、220、288



Gear Motor Dimensions (mm)



Motor Technical Data

Motor model No.	Rated voltage	No-load speed	No-load current	Rated speed	Rated torque	Rated current	Output power	Stall torque	Stall current
	VDC	r/min	mA	r/min	g.cm	mA	W	g.cm	A
TFE-130SA-10300	6	6500	60					25	0.55
TFE-130RA-12215	6	11500	120					20	0.85
TFE-130RA-14175	3	8000	120					13	0.70
TFE-130RA-18100	3	11500	250					20	1.80
TFE-130RA-2270	3	17000	300					30	3.50

Motor Technical Data

Motor model No.	Rated voltage	No-load speed	No-load current	Rated speed	Rated torque	Rated current	Output power	Stall torque	Stall current
	VDC	r/min	mA	r/min	g.cm	mA	W	g.cm	A
TGP01S-A130S-10300-288	6	20	100					5000	0.55
TGP01S-A130-12215-48	6	230	180					1000	0.85
TGP01S-A130-12215-120	6	95	180					1800	0.85
TGP01S-A130-14175-120	3	55	170					1500	0.70
TGP01S-A130-14175-220	3	35	200					2000	0.70
TGP01S-A130-18100-220	3	50	350					3000	1.80