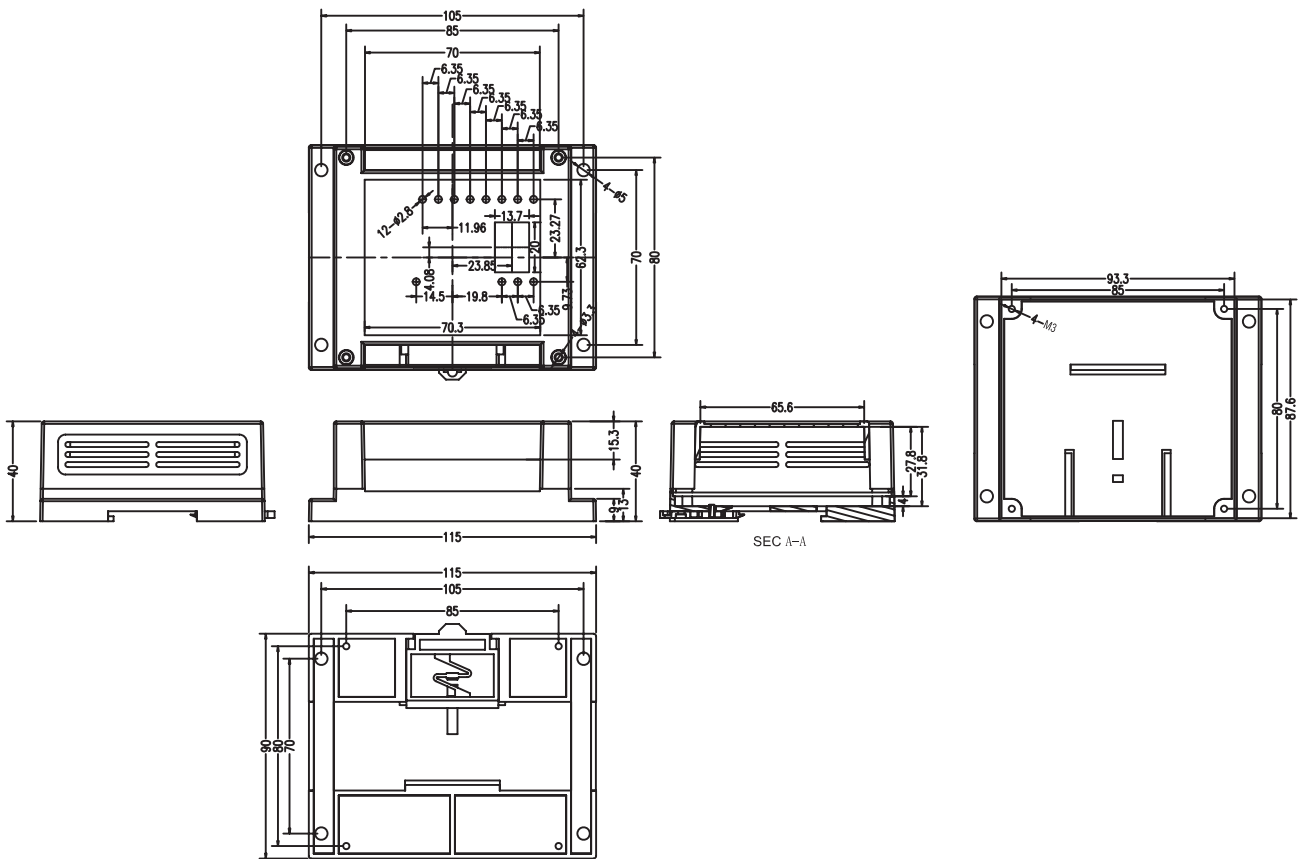
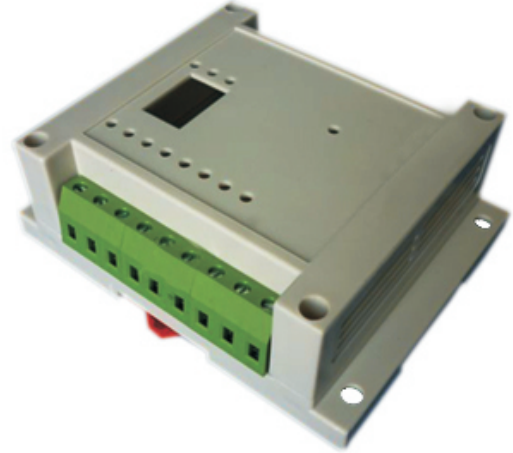


PLC housing

KLS24-JG3-01-2 115*90*40mm PLC housing, gray

Product Description:

- *Product Material: ABS
- * Widely used in various PLC module circuit, a controller unit, with electrical module
- * Product Standard accessories: cap, base, retainer, four screws
- *Cover small LCD window size: 20 * 13.7
- * Product side terminal Optional:
 - (1) 5.0 unilateral pitch terminal can be equipped with 13, a total of 26 (also available with 14P, just a little tight)
 - (2) Pitch 7.62 unilateral terminal can be equipped with nine, a total of 18
- * Two installation methods:
 - (1) screws
 - (2) fast and simple rail mounting
- * Fully insulated protection
- * Good heat dissipation
- * Product color and material batch can be customized
- * Product cover may require modification



ORDER INFORMATION

Product NO.: KLS24-JG3-01-2

Pos. NO. _____ No. _____