

INDUCTORS

Wide Band Chokes RH Series

Features:

- *Through hole leaded ferrite bead.
- *Most economical component for through hole applications requiring discrete signal filtering.
- *Higher current carrying capability than surface mount devices.
- *Tape and reel packaging for auto- insertion.

Applications:

- *Filtering of power input pins of oscillators or logic devices using high speed clocks . .
- *Filtering of low frequency input / output signals

Characteristics :

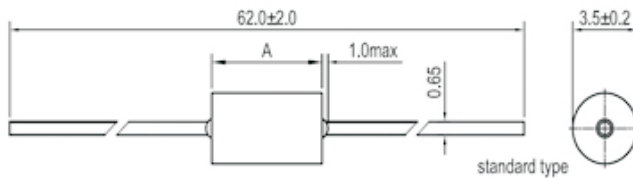
- *Impedance ranges: 40 Ω to 200Ω .(@100MHz)
- *Frequency ranges : 1MHz to 500MHz.
- *Rated current: 3.0 Amps max.
- *Operating temperature : -25 °C to 85°C.

Test equipment :

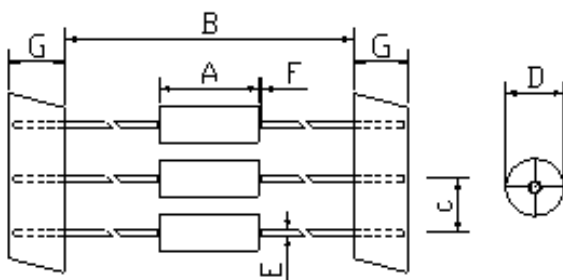
- *Impedance: HP4191A RF Impedance Analyzer.
- *Electrical specifications at 25°C.



Dimension: Unit: mm



| ITEM | A±0.3 |
|--------|-------|
| RH3530 | 3.0 |
| RH3545 | 4.5 |
| RH3547 | 4.7 |
| RH3560 | 6.0 |
| RH3580 | 8.0 |
| RH3590 | 9.0 |



| Part No. | Impedance @25MHz (Ω) Min. | Impedance @100MHz (Ω) Min. |
|----------|---------------------------|----------------------------|
| RH3530 | 25 | 40 |
| RH3545 | 30 | 60 |
| RH3547 | 35 | 60 |
| RH3560 | 50 | 75 |
| RH3580 | 60 | 100 |
| RH3590 | 80 | 120 |

ORDER INFORMATION

KLS18 - RHXXXX - R

XXXX: Dimensions
R : Packaging; R: Taping Reel; B: Bulk