

Toggle switches

L-KLS7-ES-3-T2R SPDT Seal SMT Sub-Miniature Toggle Switches

SPECIFICATIONS:

Rating: 0.4 VA max@20 V AC or DC

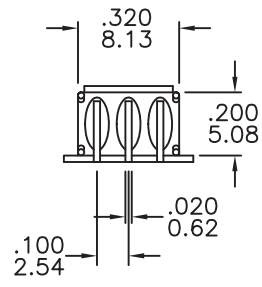
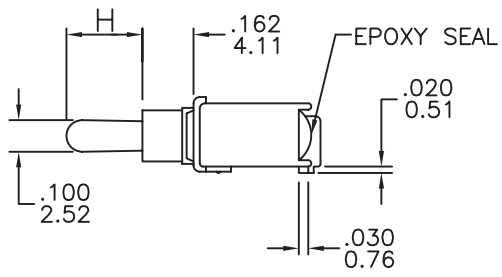
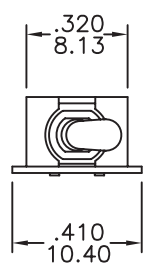
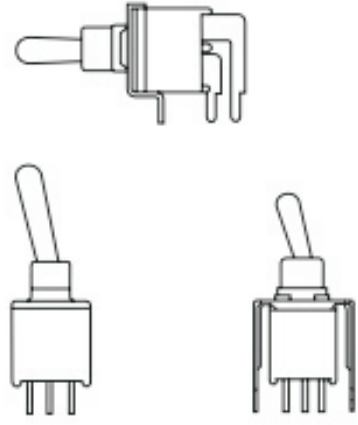
Contact Resistance: 20mΩ max

Insulation Resistance: 1000MΩ Min

Dielectric Strength: 1500V AC 1 Minute

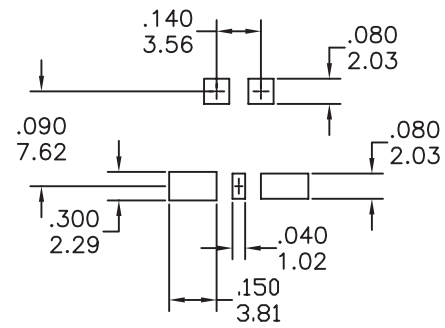
Operating Temperature: -30°C +85°C

Electrical Life : 30,000 cycles



model no.	switching position		
ES-3	on	none	on
ES-3A	on	off	on
ES-3B	on	none	(on)
ES-3H	(on)	off	(on)
ES-3I	on	off	(on)
term comm.	2-3	open	2-1

Actuator	H
T1	std. 10.16
T2	std. 6.10
T3	8.13
T4	13.97
T5	3.5
ESD protection actuator	
P1	(black) 10.16
P11	(white) 10.16
P2	(std-black) 6.10
P21	(white) 6.10



ORDER INFORMATION

L-KLS7-ES-3-T2R

