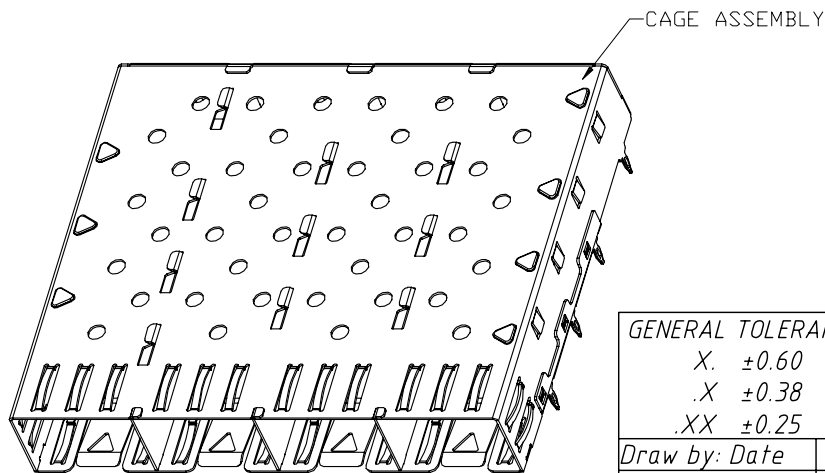
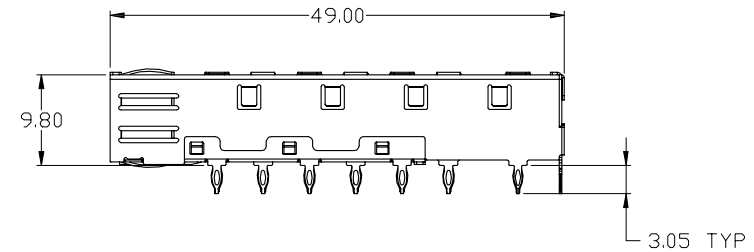
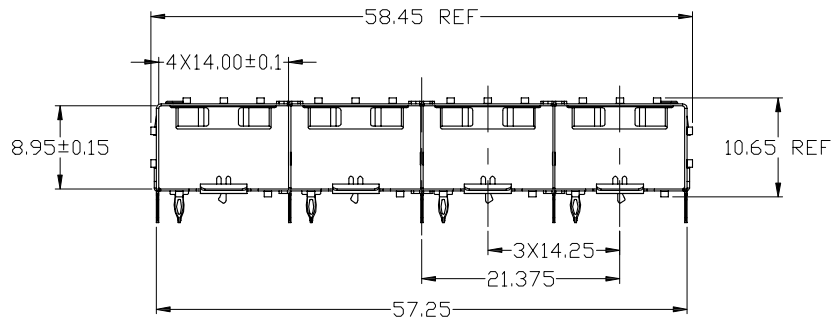
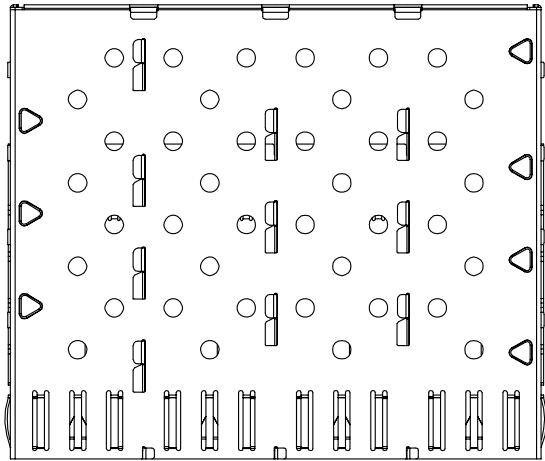


RoHS Compliant

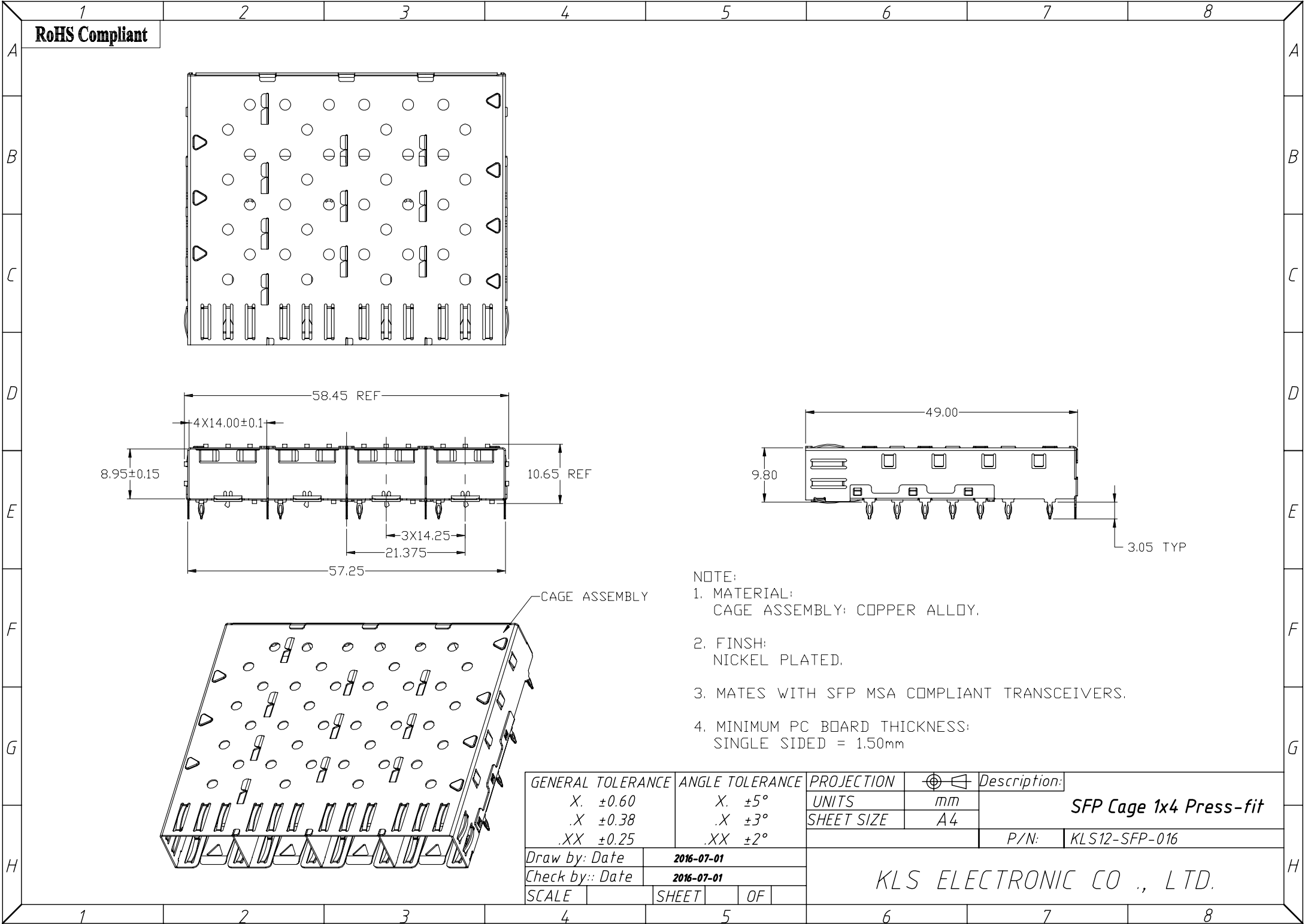


- NOTE:
1. MATERIAL:  
CAGE ASSEMBLY: COPPER ALLOY.
  2. FINISH:  
NICKEL PLATED.
  3. MATES WITH SFP MSA COMPLIANT TRANSCEIVERS.
  4. MINIMUM PC BOARD THICKNESS:  
SINGLE SIDED = 1.50mm

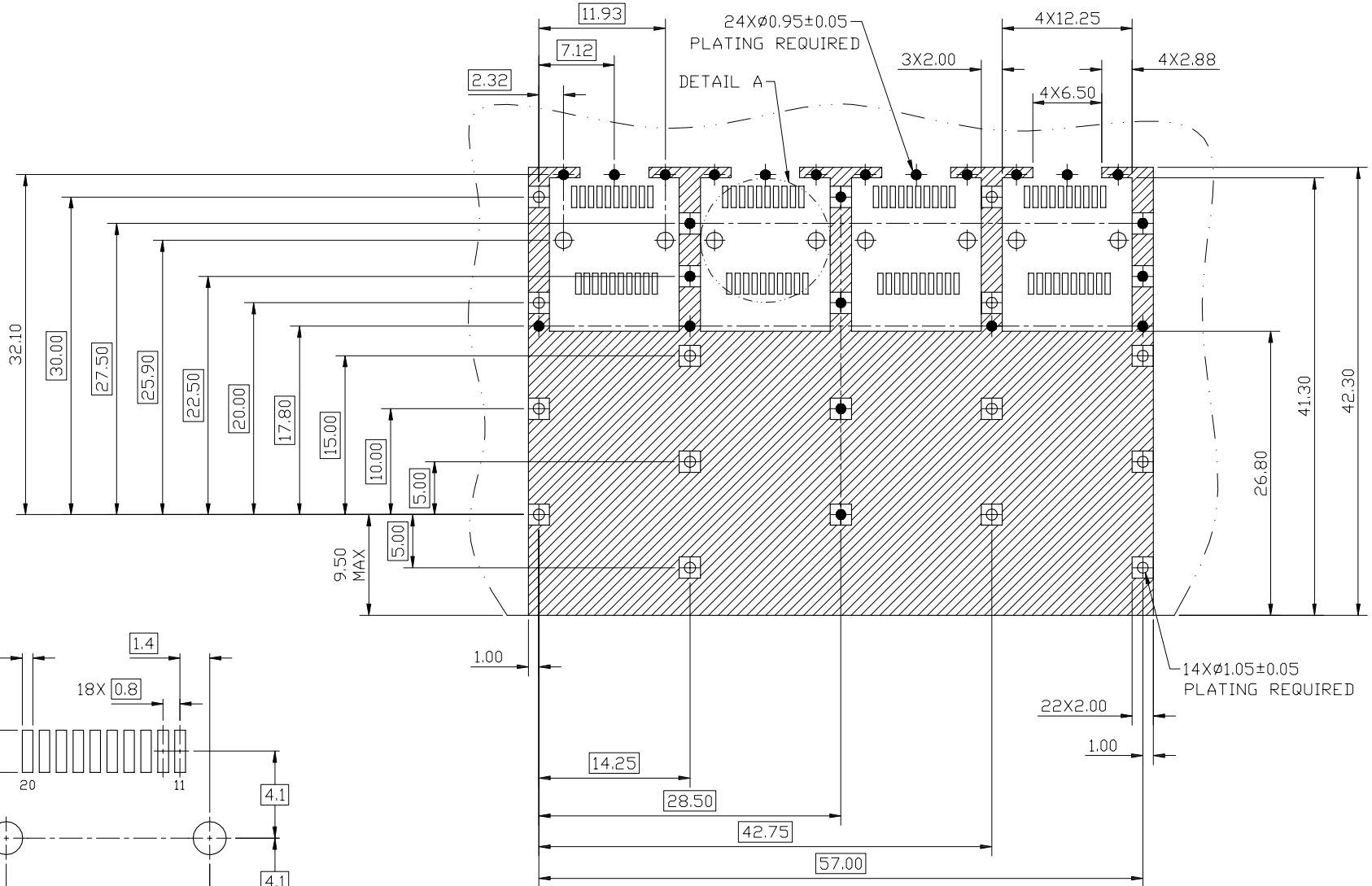
GENERAL TOLERANCE	ANGLE TOLERANCE	PROJECTION	Description:
X. ±0.60	X. ±5°	UNITS	mm
.X ±0.38	.X ±3°	SHEET SIZE	A4
.XX ±0.25	.XX ±2°		P/N: KLS12-SFP-016

Draw by: Date	2016-07-01
Check by: Date	2016-07-01
SCALE	SHEET OF

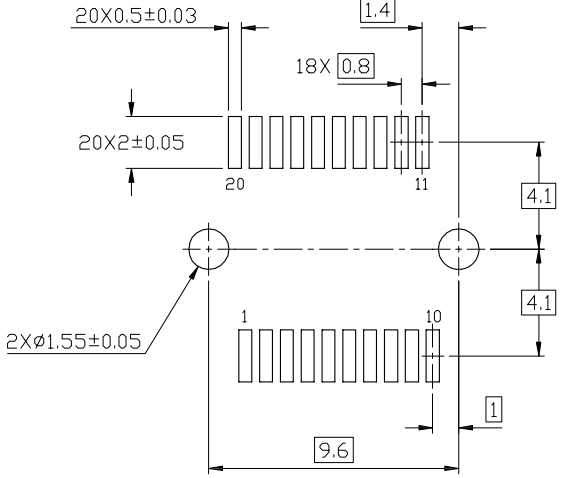
KLS ELECTRONIC CO., LTD.



RoHS Compliant



RECOMMENDED PCB LAYOUT FOR SINGLE SIDE MOUNT



DETAIL A  
SCALE 2:1

GENERAL TOLERANCE	ANGLE TOLERANCE	PROJECTION	Description:
X. ±0.60	X. ±5°	UNITS	mm
.X ±0.38	.X ±3°	SHEET SIZE	A4
.XX ±0.25	.XX ±2°		P/N: KLS12-SFP-016

Draw by: Date	2016-07-01
Check by: Date	2016-07-01
SCALE	SHEET OF

KLS ELECTRONIC CO., LTD.

SFP Cage 1x4 Press-fit