

SFP*XFP*QSFP/QSFP+ Connectors

KLS1-SFP-01

Electrical Specifications:

NOTES:

MECHANICAL:

CAGES: METAL ALLOY, THICKNESS 0.25MM.

PLATING: NO NEED.

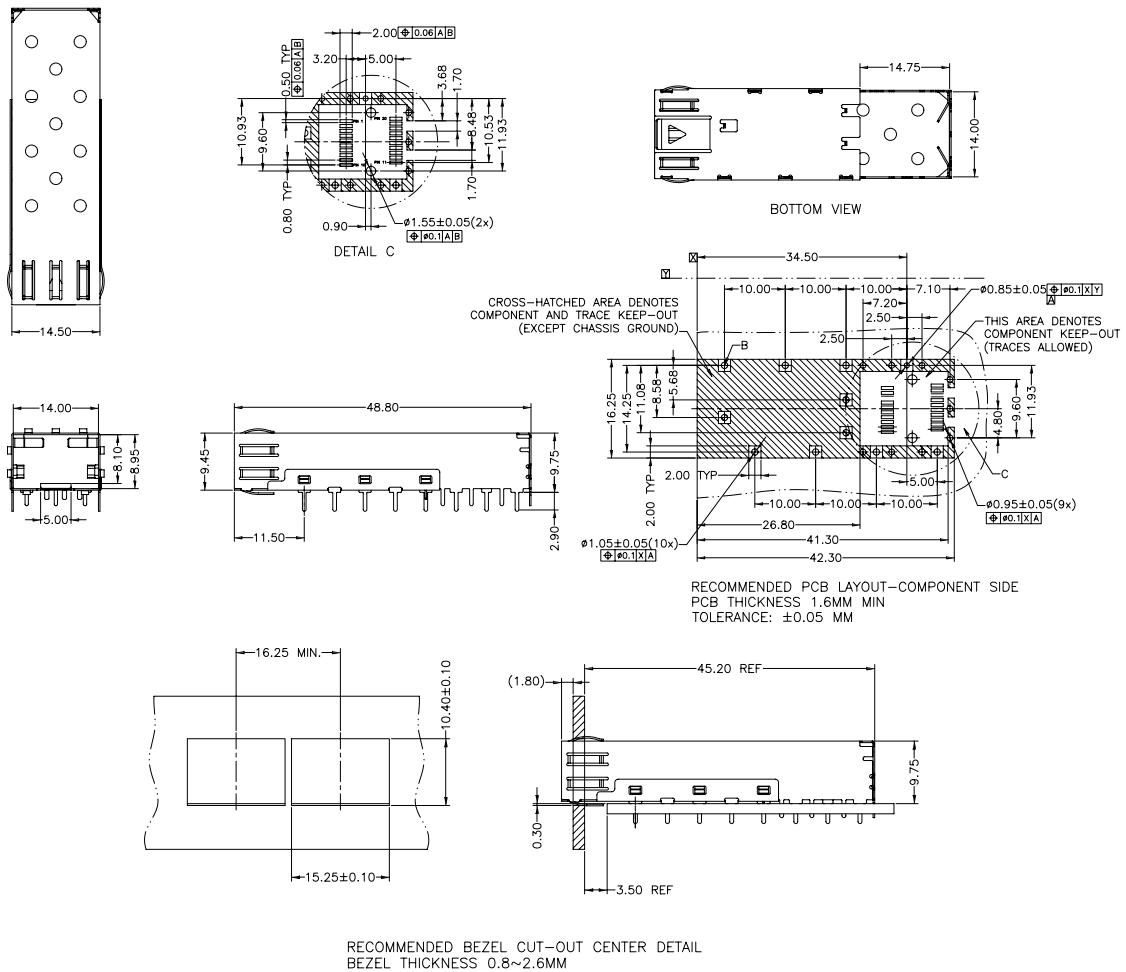
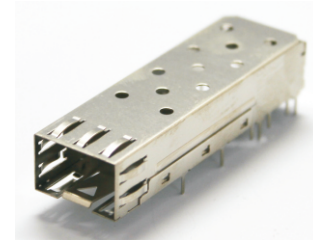
THIS CAGE IS FOR SINGLE SIDE USE ONLY.

TEMPERATURE:

OPERATION: $-40^{\circ}\text{C}\sim+85^{\circ}\text{C}$

STORAGE: $-40^{\circ}\text{C}\sim+85^{\circ}\text{C}$

RoHS COMPLIANCE.



ORDER INFORMATION

KLS1-SFP-01

Part Number