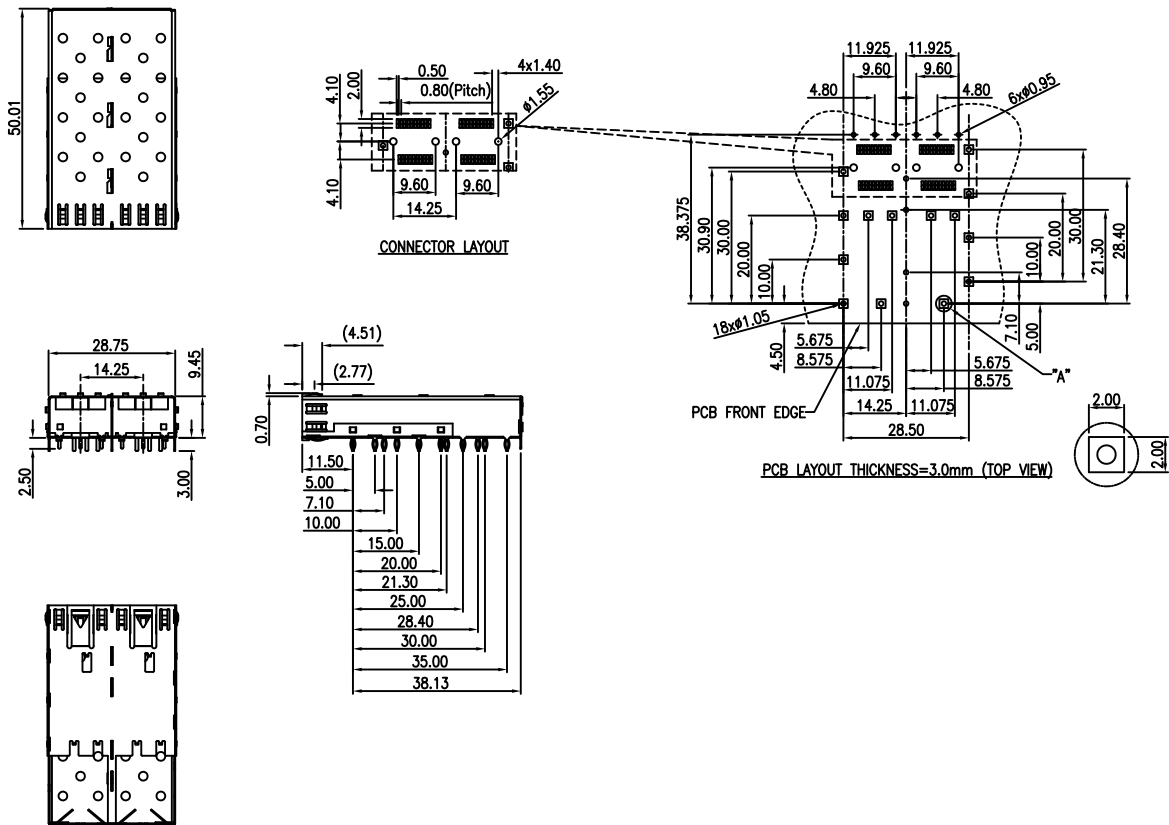
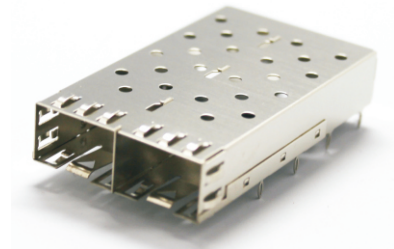


SFP*XFP*QSFP/QSFP+ Connectors

KLS1-SFP-015

Electrical Specifications:

- NOTE:
MECHANICAL:
SHIELD(CAGE) MATERIAL: COPPER ALLOY
1. THICKNESS=0.25mm
2. TEMPERATURE:
OPERATION: -40°C~ +85°C
STORAGE: -40°C~ +85°C
3. PART COMPLIANT: ZW26YY-SFPC122



ORDER INFORMATION

KLS1-SFP-015

Part Number