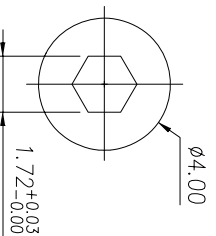


PCB LAYOUT



Type of shaft

**Electrical Characteristics**

Rated Power: DC5V 5mA Max.  
 Output signal: A \ B 2signals  
 Resolution: 12 Pulses 360°  
 24 Pulses 360°  
 Phase difference: 4ms Min.  
 Sliding noise: 1ms Max.  
 Contact Resistance: 1Ω Max.  
 Insulation resistance: 1000MΩ Min. at DC 250V  
 Withstand voltage: AC300V / 1min

**Mechanical**

Total rotation angle: 360°  
 Rotational Torque: 30~200 gf·cm Max  
 Number of Detents: 24 detents Step angle: 15°±2°  
 12 detents Step angle: 30°±2°  
 Rotational Life: 10000±200 cycles  
 Temp. Range: -10 ° C ~ + 70 ° C  
 Soldering: 265±5 ° C 3Sec. Max.

**Order Information:**

L-KLS4-EC1001 - XX  
 RoHS  
 10mm Encoder  
 Pulse and Detent Code  
 9A: 12 Pulse with 24 Detents  
 9B: 12 Pulse without Detent

GENERAL TOLERANCE		ANGLE TOLERANCE		PROJECTION		Description:
X: ±0.50	.X ±0.38	X: ±5°	.X ±3°	UNITS	SHEET SIZE	
.XX ±0.25	.XX ±2°	mm	A4	10mm Encoder		
Draw by: Date	2017-09-01	KLS P/N:				
Check by: Date	2017-09-05	SCALE		SHEET		KLS ELECTRONIC CO., LTD.
				OF		

