

Electrical Characteristics

Rated Power: DCSV 5mA Max.

Output signal: A \ B 2signals

Resolution: 12 Pulses 360°

Phase difference: 24 Pulses 360°

4ms Min.

Sliding noise: 7ms Max.

Contact Resistance: 1Ω Max.

Insulation resistance: 1000MΩ Min. at DC 250V

Withstand voltage: AC300V / 1min

Mechanical

Total rotation angle: 360°

Rotational Torque: 30~200 gf·cm Max

Number of Detents: 24 detents Step angle: 15°±2°

12 detents Step angle: 30°±2°

Rotational Life: 10000±200 cycles

Temp. Range: -10 ° C ~ +70 ° C

Soldering: 230±5 ° C 5Sec. Max.

Order Information:

L-KLS4-EC1003 - XX

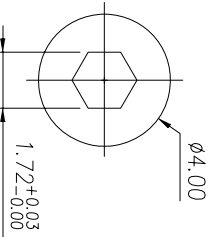
10mm Encoder

Pulse and Detent Code

9A: 12 Pulse with 24 Detents

9B: 12 Pulse without Detent

Type of shaft



PCB LAYOUT

GENERAL TOLERANCE	ANGLE TOLERANCE	PROJECTION	Description:
X: ±0.50	X: ±5°	mm	10mm Encoder
.X ±0.38	.X ±3°	A4	
.XX ±0.25	.XX ±2°	KLS P./N.	
Draw by: Date	2017-09-01	KLS4-EC1003-XX	
Check by: Date	2017-09-05		
SCALE	SHEET	OF	

KLS ELECTRONIC CO., LTD.