

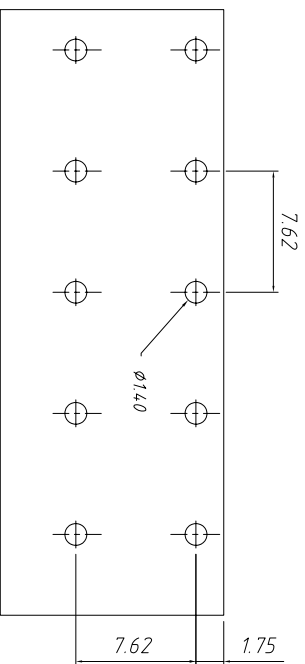
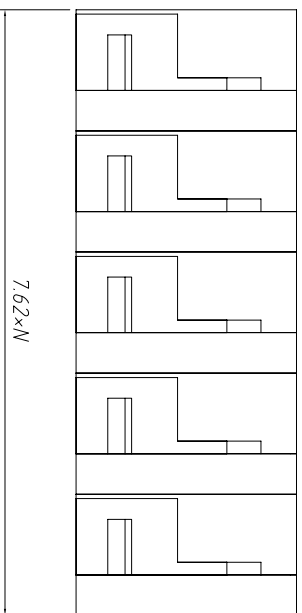
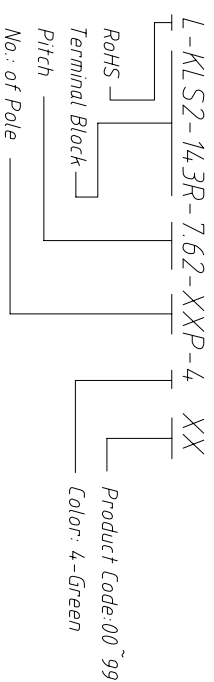
SECTION A-A

Material
 Shrapnel: Stainless steel
 Pin header: Brass, Tin plated
 Housing: PA66, UL94V-0

Electrical
 Rated voltage: 300V
 Rated current: 10A
 Wire range: 22~16AWG 1.5mm²
 Contact Resistance: 20 mΩ
 Insulation resistance: 500MΩ/DC500V
 Withstand voltage: AC2000V / 1min

Mechanical
 Temp. Range: -40 °C ~ +105 °C
 Soldering: 250°C ±5°C for 5S
 Strip length: 9~10 mm

Order Information



PCB LAYOUT

GENERAL TOLERANCE		ANGLE TOLERANCE		PROJECTION		Description:
X. ±0.60	X. ±0.38	XX ±0.25	X. ±5°	X. ±3°	XX ±2°	
Draw by: Date		2015-09-01		UNITS		Spring Clamp Terminal Block 7.62mm
Check by: Date		2015-09-15		SHEET SIZE		
SCALE		SHEET		OF		KLS P/N:
						KLS2-143R-7.62-XXP

KLS ELECTRONIC CO., LTD.