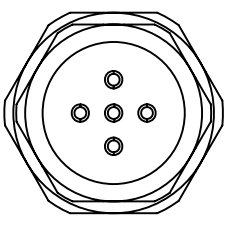
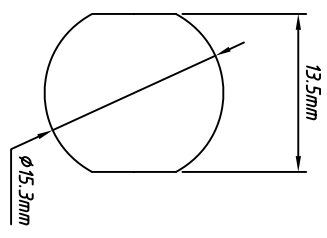


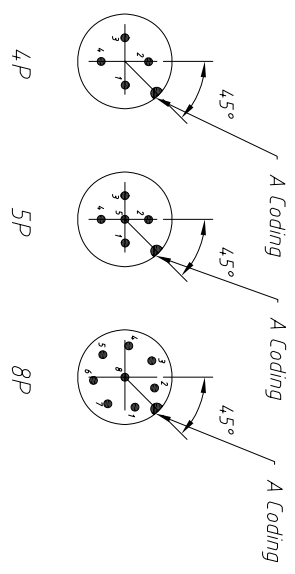
Front view



Back view



Panel Cut-out



Electrical & Mechanical data

IP rating: IP67

Contacts resistance: $\leq 5\text{ m}\Omega$

Insulation resistance: $\geq 100\text{ M}\Omega$

Orientation: Soldering, Front Lock

Over mold/ Shell: Metal shell

Connector contacts: Brass with gold plated

Coupling nut/screw: Brass with nickel plated screw

Insert/ Housing: PA66 + GF

Sealing: O-ring

Temperature Range: -25°C ~ $+80^{\circ}\text{C}$

	4 Pin	5 Pin	8 Pin
Rated current	4A	4A	2A
Rated voltage	250V	60V	30V

Order information

L-KLS15-M12 A-CL2 XX

- L: Rohs
- M12: Screw type
- A: A-Coding
- CL2: Soldering, Panel mount
- XX: Number of Contacts

GENERAL TOLERANCE	X: ± 0.60 .X: ± 0.38 .XX: ± 0.25	ANGLE TOLERANCE	X: $\pm 5^{\circ}$.X: $\pm 3^{\circ}$.XX: $\pm 2^{\circ}$
PROJECTION		UNITS	mm
SHEET SIZE	A4		

Description:	Soldering connector, Panel mount, Front lock, Automation technology, M12, Male, CNC Screw
KLS P/N:	KLS15-M12A-CL2XX
KLS ELECTRONIC CO., LTD.	