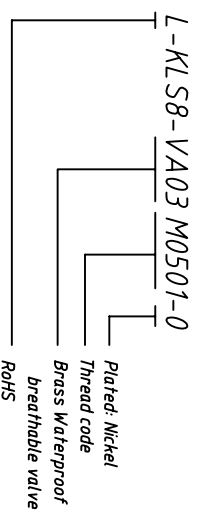
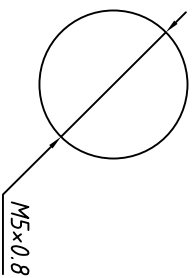



Material: Brass, Nickel plated
Material: EPTFE
Film: NBR, EPDM
Sealing: IP67
IP rating: IP67
Thread: M5x0.8
Panel Mounting: M5x0.8
Temp. Range: -40 ° C ~ + 125 ° C
breathable valve Range: 115ml/minute
Maximum torque: 4Kgf.cm Max.

Order Information



Panel Mounting
hole diameter



GENERAL TOLERANCE		ANGLE TOLERANCE		PROJECTION		SHEET SIZE	
X. ±0.60	X. ±5°	XX ±2°	mm	A4	Description: M5x0.8 Brass waterproof breathable valve KLS P/N: KLS8-VA03M0501-0  NingBo KLS ELECTRONIC CO.,LTD.		
X ±0.38	.X ±3°	mm					
XX ±0.25							
Draw	2018-01-20	Check	2018-01-20				