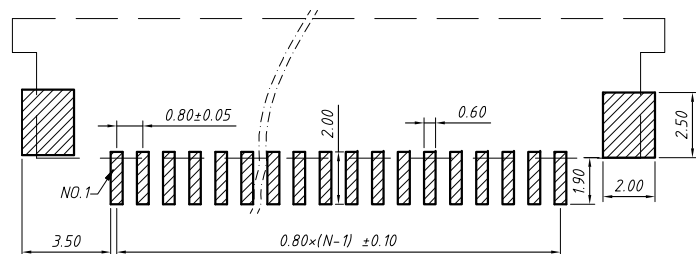


Recommended FPC Dimension



PCB Layout

**Material**  
 Housing: LCP UL94V-0  
 Lock: 4~30 Pin PA46 / 30~35 Pin LCP  
 Plug spring: Phosphor Bronze, Gold/Tin  
 Soldering: Phosphor Bronze, Gold/Tin

**Electrical**  
 Voltage rating: 50 V  
 Current Rating: 0.4 A  
 Withstanding Voltage: 200 V  
 Insulation resistance: 500M $\Omega$ .Min.  
 Contact resistance: 20 m $\Omega$ .Max.

**Mechanical**  
 Temp. Range: -25 °C ~ +85 °C

**Order Information**

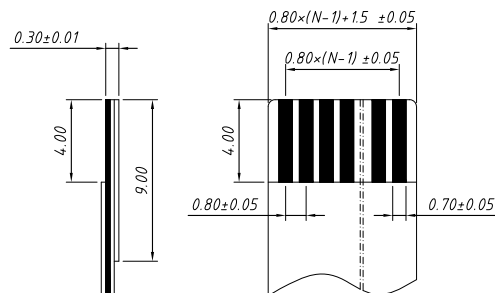
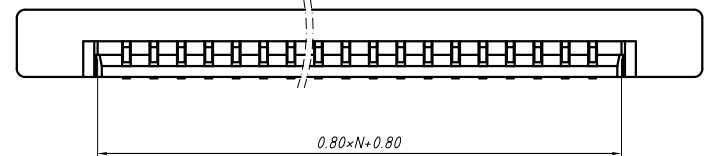
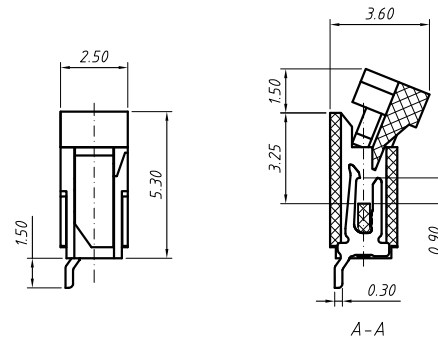
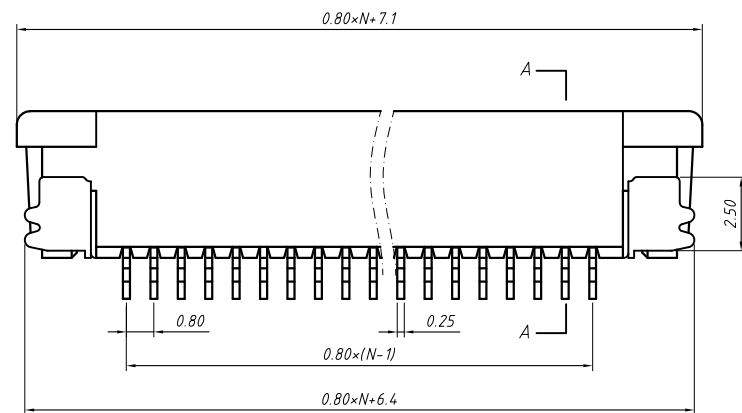
L-KLS1- 241E - XX - T-U-R  
 RoHS  
 Series No.  
 No. of pins(04~40 pins)  
 T-SMT Pin  
 U-Upper Contact  
 Pack: R-Reel

GENERAL TOLERANCE	ANGLE TOLERANCE	PROJECTION	Description:
X. $\pm 0.15$	X. $\pm 5^\circ$	UNITS	0.80mm Pitch FFC/FPC Connector
.X $\pm 0.03$	.X $\pm 3^\circ$	SHEET SIZE	
.XX $\pm 0.05$	.XX $\pm 2^\circ$	KLS P/N:	

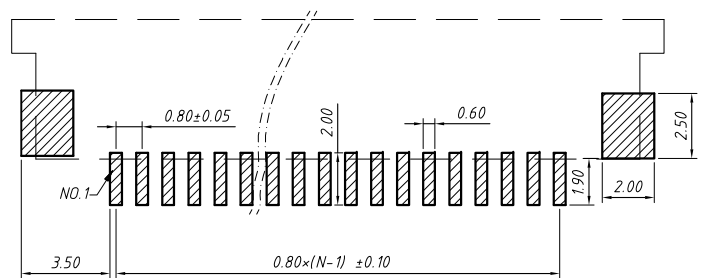
Draw by: Date	2018-03-10
Check by: Date	2018-03-10
SCALE	SHEET OF



NingBo KLS ELECTRONIC CO.,LTD.



Recommended FPC Dimension



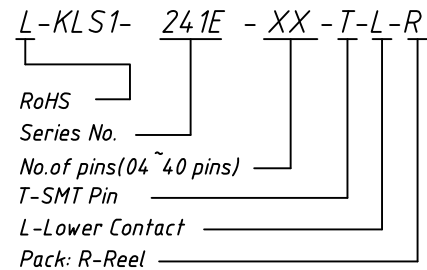
PCB Layout

**Material**  
 Housing: LCP UL94V-0  
 Lock: 4~30 Pin PA46 / 30~35 Pin LCP  
 Plug spring: Phosphor Bronze, Gold/Tin  
 Soldering: Phosphor Bronze, Gold/Tin

**Electrical**  
 Voltage rating: 50 V  
 Current Rating: 0.4 A  
 Withstanding Voltage: 200 V  
 Insulation resistance: 500M $\Omega$ .Min.  
 Contact resistance: 20 m $\Omega$ .Max.

**Mechanical**  
 Temp. Range: -25 °C ~ +85 °C

**Order Information**



GENERAL TOLERANCE		ANGLE TOLERANCE		PROJECTION	Description:
X. ±0.15	.X ±0.03	X. ±5°	.X ±3°	UNITS	0.80mm Pitch FFC/FPC Connector
.XX ±0.05		.XX ±2°		SHEET SIZE	
				KLS P/N:	

Draw by: Date	2018-03-10
Check by: Date	2018-03-10
SCALE	SHEET OF