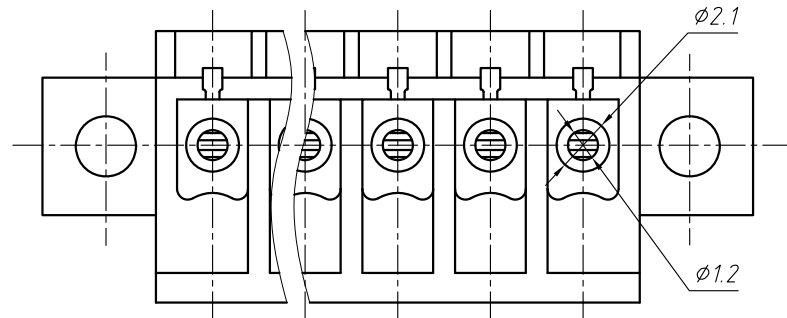


SECTION A-A

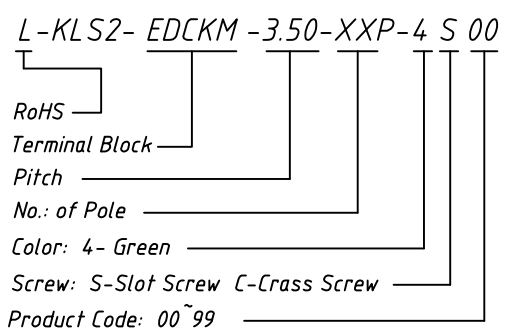


Material  
 Housing: PA66, UL94V-0  
 Clamp: Phosphor bronze, Ni Plated  
 Screws: M2 Steel, Zinc plated  
 Wire guard: Brass, Ni plated

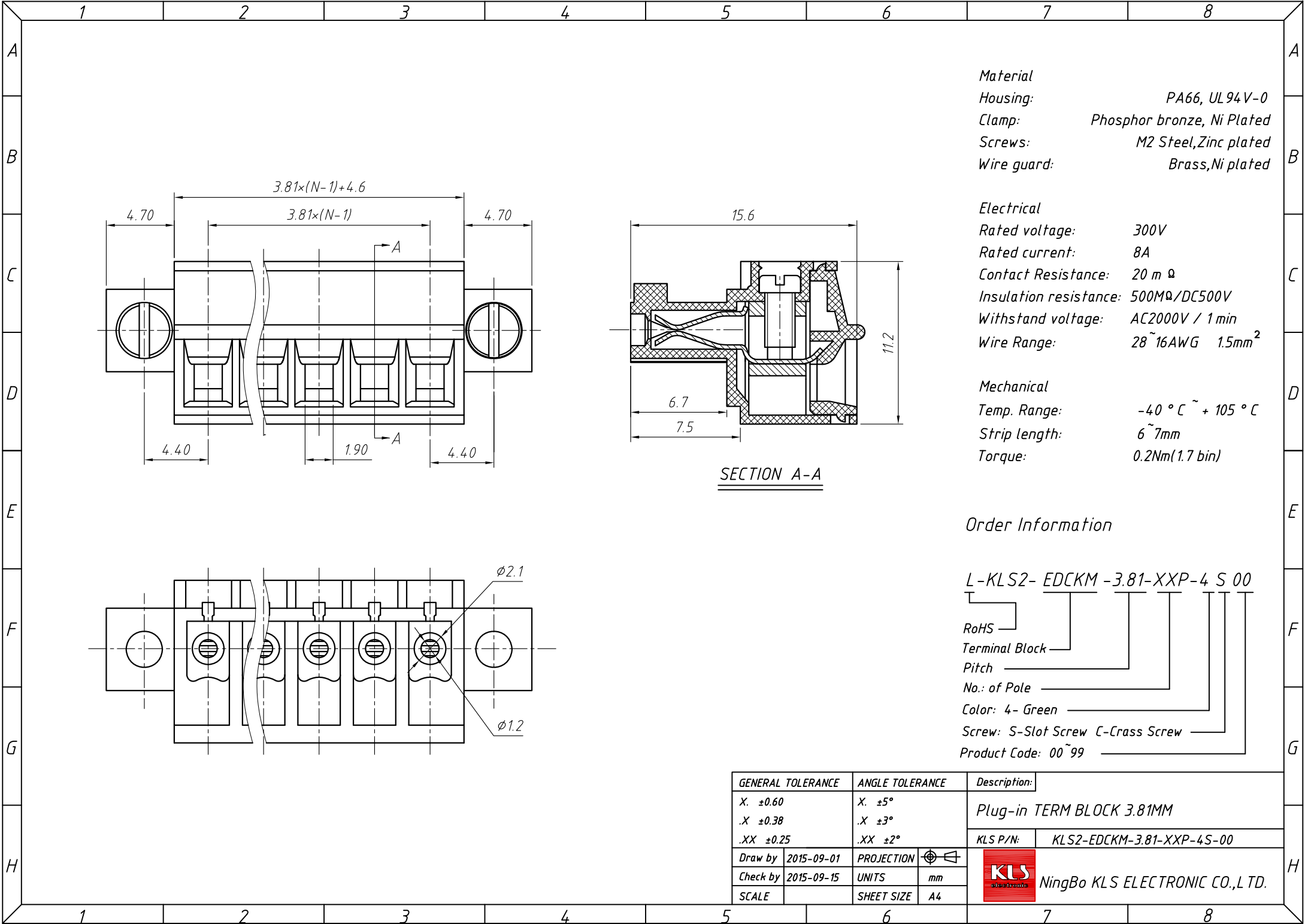
Electrical  
 Rated voltage: 300V  
 Rated current: 8A  
 Contact Resistance: 20 mΩ  
 Insulation resistance: 500MΩ/DC500V  
 Withstand voltage: AC2000V / 1 min  
 Wire Range: 28 ~ 16AWG 1.5mm<sup>2</sup>

Mechanical  
 Temp. Range: -40 °C ~ +105 °C  
 Strip length: 6 ~ 7mm  
 Torque: 0.2Nm (1.7 bin)

Order Information



GENERAL TOLERANCE		ANGLE TOLERANCE		Description:	
X. ±0.60		X. ±5°		Plug-in TERM BLOCK 3.50MM	
.X ±0.38		.X ±3°		KLS P/N:	KLS2-EDCKM-3.50-XXP-4S-00
.XX ±0.25		.XX ±2°			
Draw by	2015-09-01	PROJECTION			NingBo KLS ELECTRONIC CO.,L TD.
Check by	2015-09-15	UNITS	mm		
SCALE		SHEET SIZE	A4		



**Material**  
**Housing:** PA66, UL94V-0  
**Clamp:** Phosphor bronze, Ni Plated  
**Screws:** M2 Steel, Zinc plated  
**Wire guard:** Brass, Ni plated

**Electrical**  
**Rated voltage:** 300V  
**Rated current:** 8A  
**Contact Resistance:** 20 mΩ  
**Insulation resistance:** 500MΩ/DC500V  
**Withstand voltage:** AC2000V / 1 min  
**Wire Range:** 28 ~ 16AWG 1.5mm<sup>2</sup>

**Mechanical**  
**Temp. Range:** -40 °C ~ +105 °C  
**Strip length:** 6 ~ 7mm  
**Torque:** 0.2Nm (1.7 bin)

**Order Information**

**L-KLS2- EDCKM -3.81-XXP-4 S 00**

RoHS —  
Terminal Block —  
Pitch —  
No. of Pole —  
Color: 4- Green —  
Screw: S-Slot Screw C-Cross Screw —  
Product Code: 00 ~ 99 —

GENERAL TOLERANCE		ANGLE TOLERANCE		Description:	
X. ±0.60		X. ±5°		Plug-in TERM BLOCK 3.81MM	
.X ±0.38		.X ±3°		KLS P/N:	KLS2-EDCKM-3.81-XXP-4S-00
.XX ±0.25		.XX ±2°			
Draw by	2015-09-01	PROJECTION			NingBo KLS ELECTRONIC CO.,L TD.
Check by	2015-09-15	UNITS	mm		
SCALE		SHEET SIZE	A4		