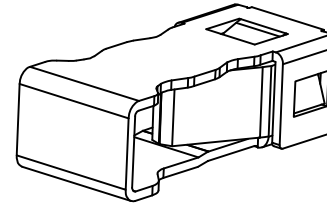
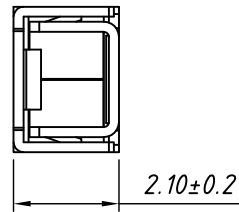
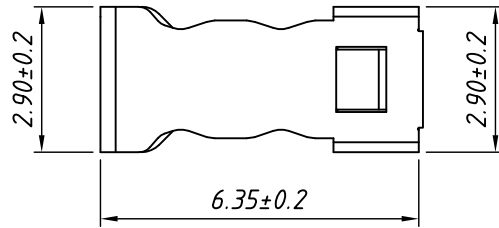


1  
RoHS Compliant



**MATERIAL**

Contacts: Phosphor Bronze, Tin-plated

**Main Specifications**

Poles: 01P

Contact Resistance:  $\leq 20m\Omega$

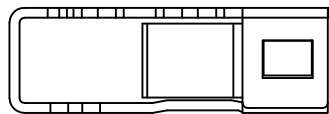
Insulation Resistance:  $\geq 800M\Omega$

Rated Voltage: 250V AC DC

Rated Current: 2.0A AC DC

Withstanding Voltage: 1500V AC/minute

Temperature Range:  $-45^{\circ}C \sim +125^{\circ}C$

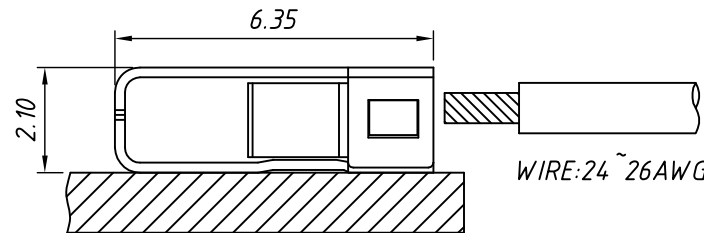
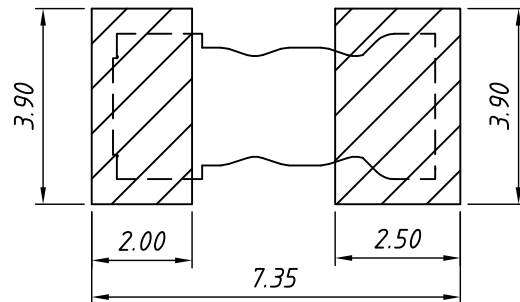


**Order Information**

L-KLS2-L49

Series No.

RoHS



ASSEMBLY LAYOUT

Board Layout

ANGLE TOLERANCE X. $\pm 2^{\circ}$	PROJECTION		Description:	Naked Terminal SMT for led lighting, 24 ~ 26AWG
	UNITS	mm		
GENERAL TOLERANCE X. $\pm 0.5$ .X $\pm 0.3$ .XX $\pm 0.25$	SHEET SIZE	A4		
	Date	2018-11-10	KLS P/N:	L-KLS2-L49
	Draw	Daniel		NingBo KLS ELECTRONIC CO.,L TD.
	Check			
	SHEET	1 OF 1		