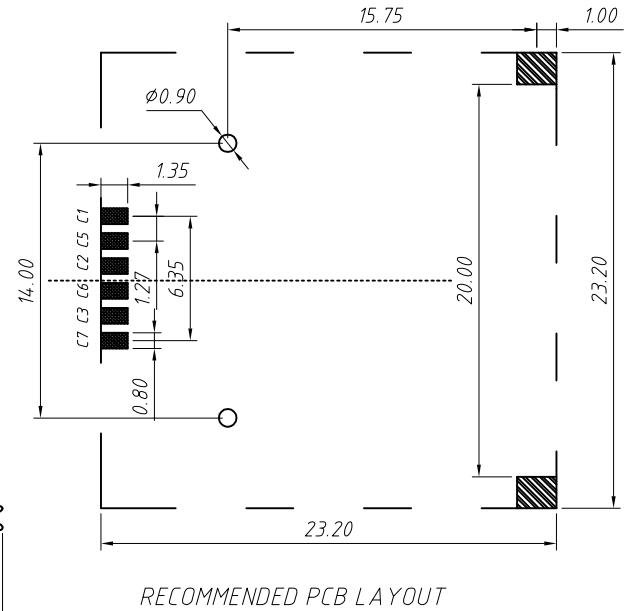
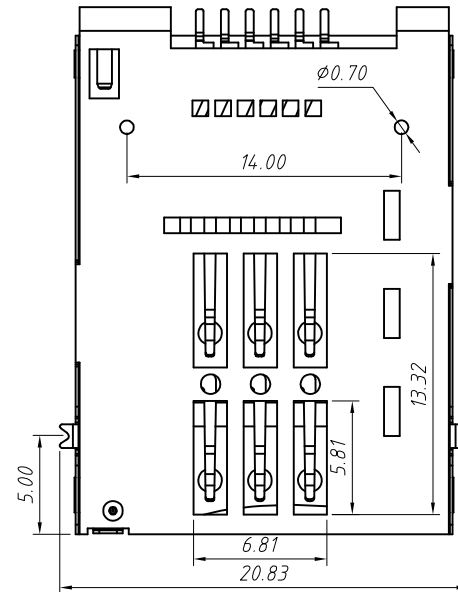


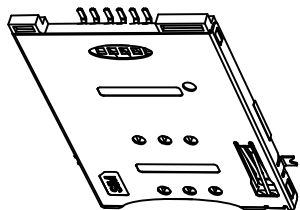
ALL SOLDER TAILS AND LATCH



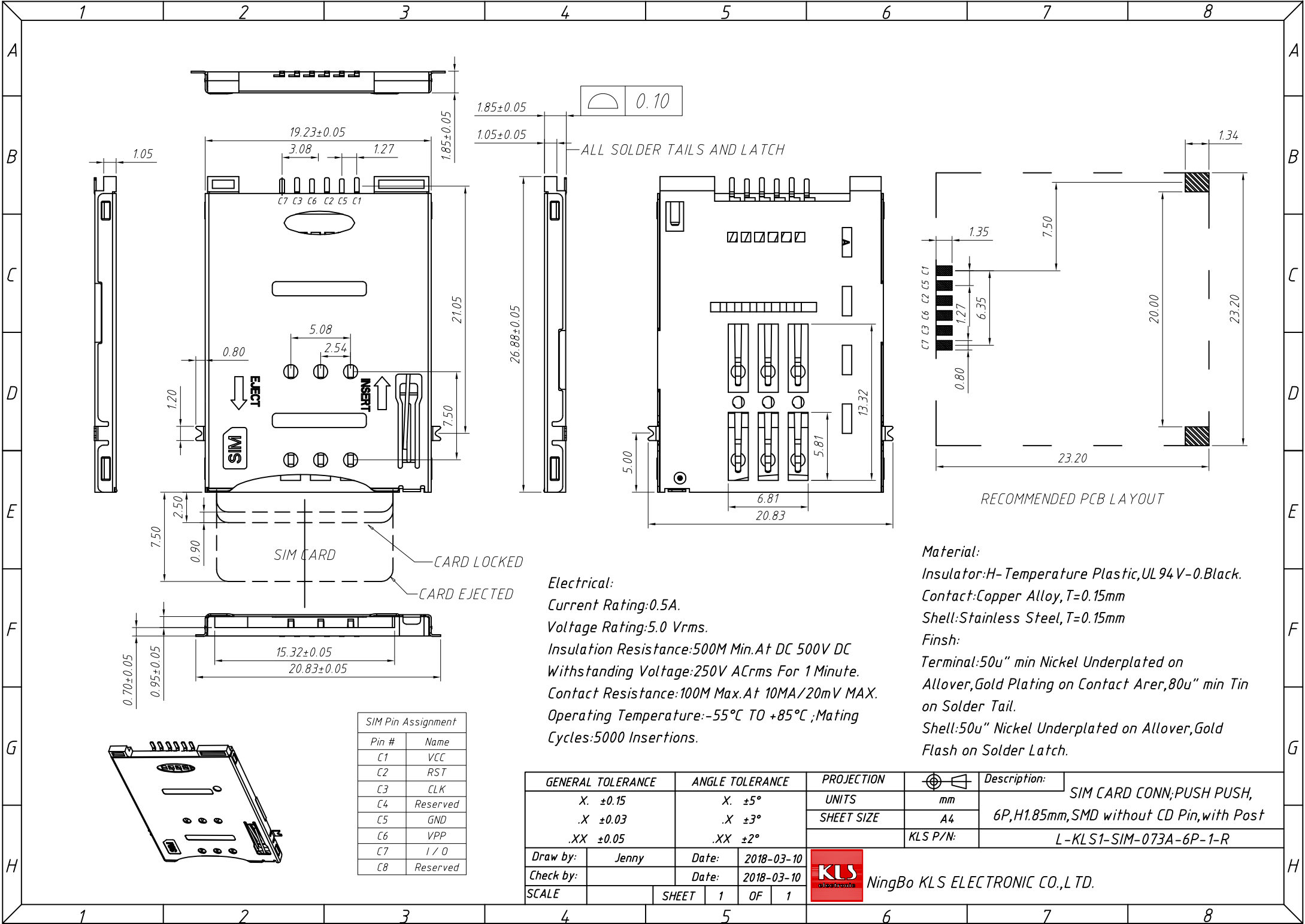
**Electrical:**  
 Current Rating:0.5A.  
 Voltage Rating:5.0 Vrms.  
 Insulation Resistance:500M Min.At DC 500V DC  
 Withstanding Voltage:250V ACrms For 1 Minute.  
 Contact Resistance:100M Max.At 10MA/20mV MAX.  
 Operating Temperature:-55°C TO +85°C ;Mating  
 Cycles:5000 Insertions.

**Material:**  
 Insulator:H-Temperature Plastic,UL 94 V-0.Black.  
 Contact:Copper Alloy, T=0.15mm  
 Shell:Stainless Steel, T=0.15mm  
 Finish:  
 Terminal:50u" min Nickel Underplated on  
 Allover,Gold Plating on Contact Arer,80u" min Tin on  
 Solder Tail.  
 Shell:50u" Nickel Underplated on Allover,Gold Flash  
 on Solder Latch.

SIM Pin Assignment	
Pin #	Name
C1	VCC
C2	RST
C3	CLK
C4	Reserved
C5	GND
C6	VPP
C7	I / O
C8	Reserved



GENERAL TOLERANCE		ANGLE TOLERANCE		PROJECTION		Description:	
X	±0.15	X	±5°	UNITS	mm	SIM CARD CONN;PUSH PUSH, 6P,H1.85mm,SMD without CD Pin,with Post L-KLS1-SIM-073A-6P-0-R	
.X	±0.03	.X	±3°	SHEET SIZE	A4		
.XX	±0.05	.XX	±2°	KLS P/N:			
Draw by:	Jenny	Date:	2018-03-10	 NingBo KLS ELECTRONIC CO.,L TD.			
Check by:		Date:	2018-03-10				
SCALE		SHEET	1	OF	1		



0.10

ALL SOLDER TAILS AND LATCH


RECOMMENDED PCB LAYOUT

**Material:**  
 Insulator:H-Temperature Plastic,UL 94 V-0.Black.  
 Contact:Copper Alloy,T=0.15mm  
 Shell:Stainless Steel,T=0.15mm  
 Finish:  
 Terminal:50" min Nickel Underplated on  
 Allover,Gold Plating on Contact Arer,80u" min Tin  
 on Solder Tail.  
 Shell:50" Nickel Underplated on Allover,Gold  
 Flash on Solder Latch.

**Electrical:**  
 Current Rating:0.5A.  
 Voltage Rating:5.0 Vrms.  
 Insulation Resistance:500M Min.At DC 500V DC  
 Withstanding Voltage:250V ACrms For 1 Minute.  
 Contact Resistance:100M Max.At 10MA/20mV MAX.  
 Operating Temperature:-55°C TO +85°C ;Mating  
 Cycles:5000 Insertions.

SIM Pin Assignment

Pin #	Name
C1	VCC
C2	RST
C3	CLK
C4	Reserved
C5	GND
C6	VPP
C7	I / O
C8	Reserved

GENERAL TOLERANCE		ANGLE TOLERANCE		PROJECTION		Description:	
X.	±0.15	X.	±5°	UNITS	mm	SIM CARD CONN;PUSH PUSH, 6P,H1.85mm,SMD without CD Pin,with Post L-KLS1-SIM-073A-6P-1-R	
.X	±0.03	.X	±3°	SHEET SIZE	A4		
.XX	±0.05	.XX	±2°	KLS P/N:			
Draw by:	Jenny	Date:	2018-03-10	 NingBo KLS ELECTRONIC CO.,L TD.			
Check by:		Date:	2018-03-10				
SCALE		SHEET	1	OF	1		