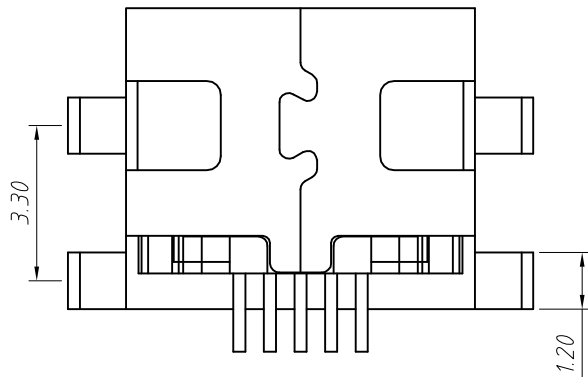
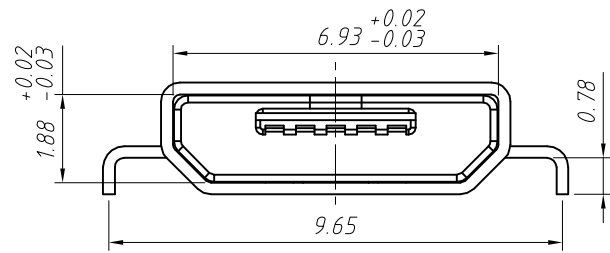


RECOMMENDED PCB LAYOUT



Material

Housing: LCP, UL 94V-0, Black.
 Contact: Copper Alloy, Gold
 Contact Type: Stamped
 Shielding: Stainless Steel Matt Tin Plated.

Order Information

L-KLS1- 4238 - B - R

- R-Reel packing
- Color: B=Black
- Micro USB
- RoHS

Electrical:

Current Rating: 1.8 A Pin1 & Pin 5
 1.0 A Other Pins
 Voltage Rating: 30V DC
 Contact Resistance: 30mΩ Max.
 Withstanding Voltage: 100 Vac/Min.
 Insulation Resistance: 1000MΩ Min.
 Operating Temperature: -40°C Up To +85°C

GENERAL TOLERANCE	PROJECTION		Description:
X. ±0.50	UNITS	mm	CONN RCPT 5POS MICRO USB DIP, MID MOUNT
.X ±0.25	SCALE	1:1	
.XX ±0.10	Draw by:	Jenny	
ANGLE TOLERANCE	Check by:		KLS P/N: L-KLS1-4238-B-R
X. ±5°	Date	2018-03-01	NingBo KLS ELECTRONIC CO., L TD.
.X ±3°	SHEET	1 OF 1	
.XX ±2°			