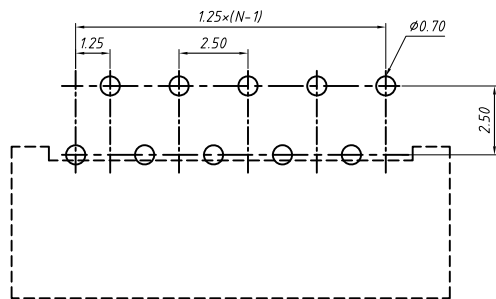
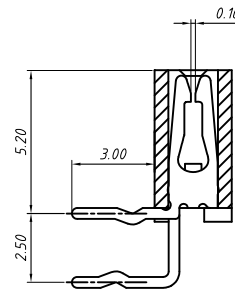
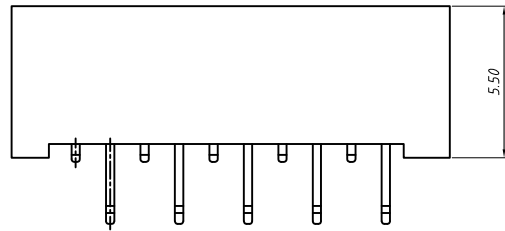
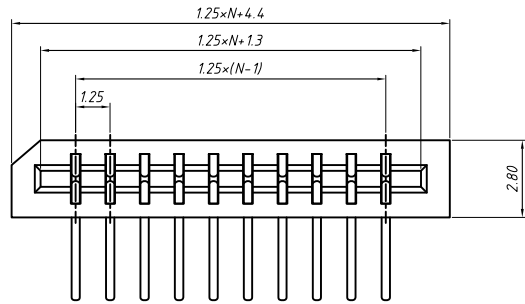


RoHS Compliant



PCB Layout

**Material**

Insulator: Glass-Reinforced Thermoplastic

Contact: Copper Alloy, Tin/Lead Plated Over Nickel

**Electrical**

Current rating: 0.5 A

Withstanding Voltage: 500 V

Insulation resistance: 1000MΩ.Min.

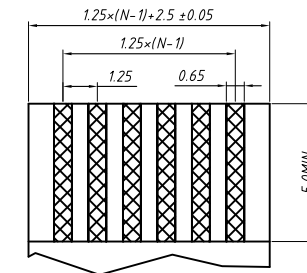
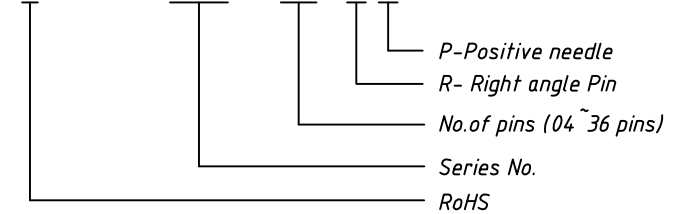
Contact resistance: 30 mΩ.max.

**Mechanical**

Temp. Range: -55 °C ~ +85 °C

**Order Information**

L-KLS1- 220B - XX -R-P



Proper Cable

GENERAL TOLERANCE	ANGLE TOLERANCE	PROJECTION	Description:
X. ±0.15	X. ±5°	UNITS	CONN FFC 1.25mm THR 90°,Positive needle
.X ±0.03	.X ±3°	SHEET SIZE	
.XX ±0.05	.XX ±2°	KLS P/N:	

Draw by: Date 2018-03-10

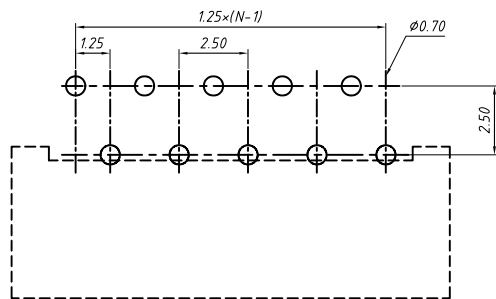
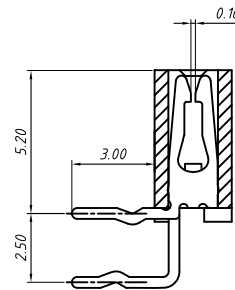
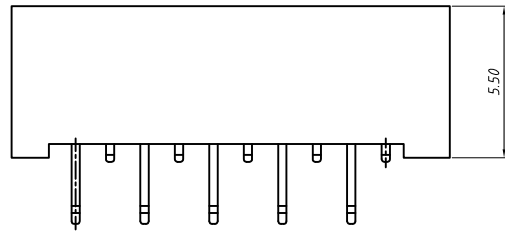
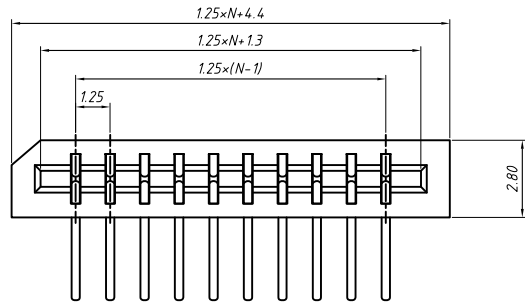
Check by: Date 2018-03-10

SCALE SHEET OF



NingBo KLS ELECTRONIC CO.,L TD.

RoHS Compliant



PCB Layout

**Material**

Insulator: Glass-Reinforced Thermoplastic

Contact: Copper Alloy, Tin/Lead Plated Over Nickel

**Electrical**

Current rating: 0.5 A

Withstanding Voltage: 500 V

Insulation resistance: 1000MΩ.Min.

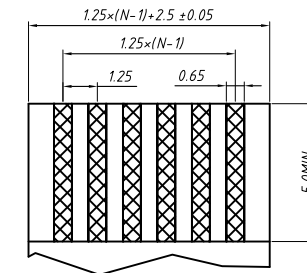
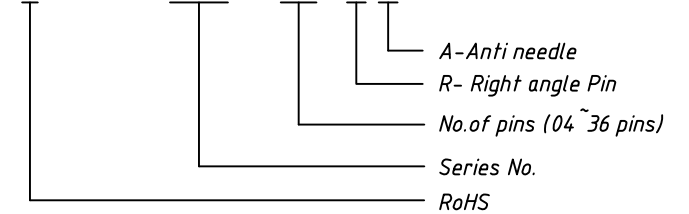
Contact resistance: 30 mΩ.max.

**Mechanical**

Temp. Range: -55 °C ~ +85 °C

**Order Information**

L-KLS1- 220B - XX -R-A



Proper Cable

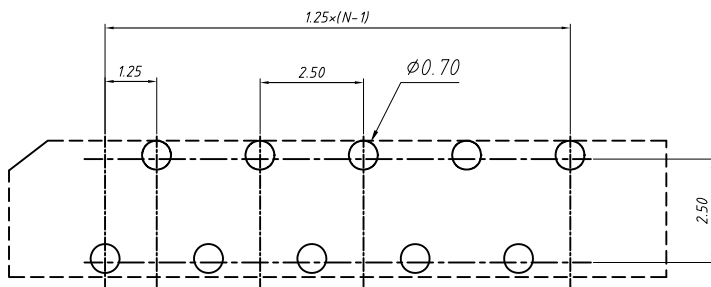
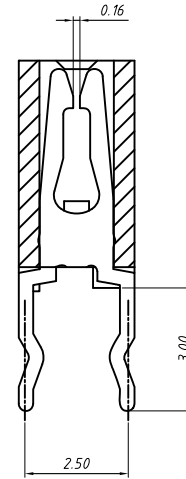
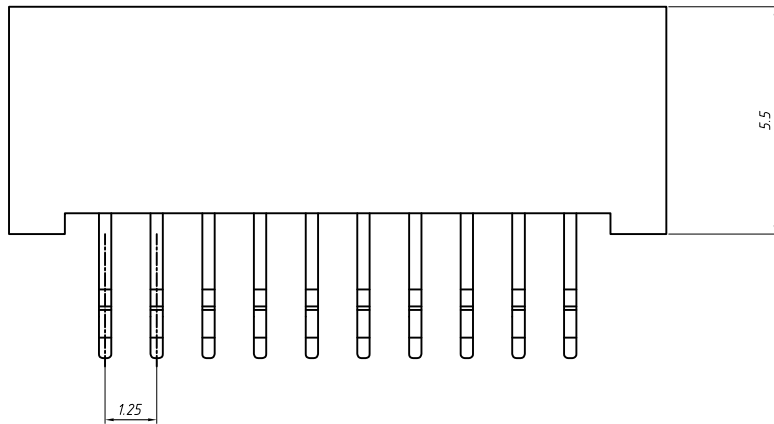
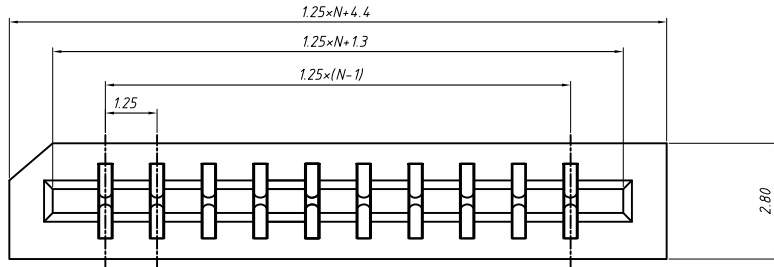
GENERAL TOLERANCE	ANGLE TOLERANCE	PROJECTION	Description:
X. ±0.15	X. ±5°	UNITS	CONN FFC 1.25mm THR 90°,Anti needle
.X ±0.03	.X ±3°	SHEET SIZE	
.XX ±0.05	.XX ±2°	KLS P/N:	

Draw by: Date	2018-03-10
Check by: Date	2018-03-10
SCALE	SHEET OF



NingBo KLS ELECTRONIC CO.,L TD.

RoHS Compliant



PCB Layout

**Material**

Insulator: Glass-Reinforced Thermoplastic

Contact: Copper Alloy, Tin/Lead Plated Over Nickel

**Electrical**

Current rating: 0.5 A

Withstanding Voltage: 500 V

Insulation resistance: 1000MΩ.Min.

Contact resistance: 30 mΩ.max.

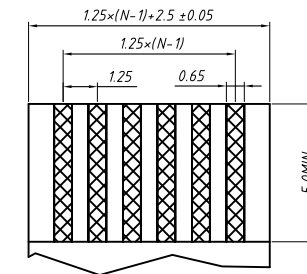
**Mechanical**

Temp. Range: -55 °C ~ + 85 °C

**Order Information**

L-KLS1- 220B - XX -S-P

- P-Positive needle
- S-Straight Pin
- No.of pins (04 ~ 36 pins)
- Series No.
- RoHS



Proper Cable

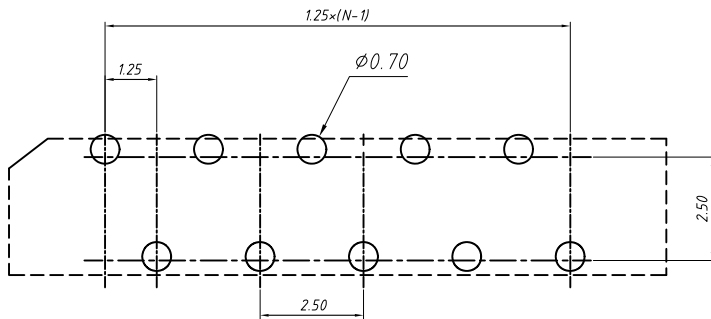
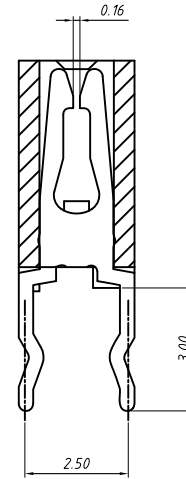
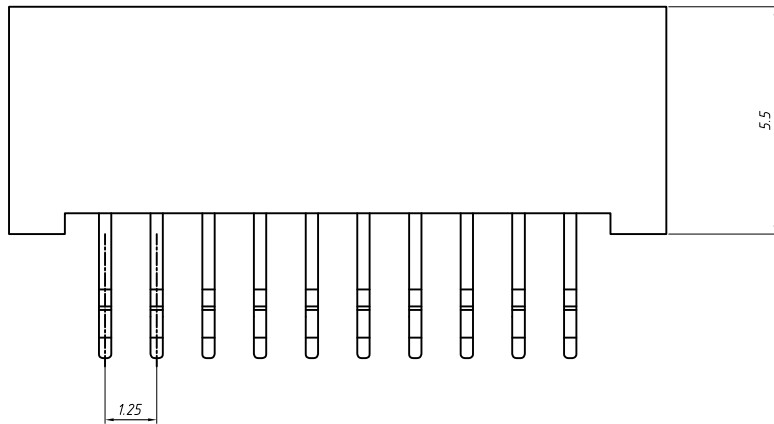
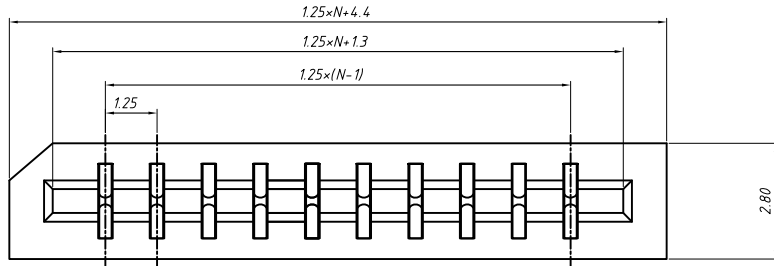
GENERAL TOLERANCE	ANGLE TOLERANCE	PROJECTION	Description:
X. ±0.15	X. ±5°	UNITS	CONN FFC 1.25mm THR 180°,Positive needle
.X ±0.03	.X ±3°	SHEET SIZE	
.XX ±0.05	.XX ±2°	KLS P/N:	

Draw by: Date	2018-03-10
Check by: Date	2018-03-10
SCALE	SHEET OF



NingBo KLS ELECTRONIC CO.,L TD.

RoHS Compliant



PCB Layout

Material

Insulator: Glass-Reinforced Thermoplastic

Contact: Copper Alloy, Tin/Lead Plated Over Nickel

Electrical

Current rating: 0.5 A

Withstanding Voltage: 500 V

Insulation resistance: 1000MΩ.Min.

Contact resistance: 30 mΩ.max.

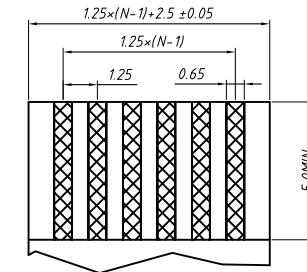
Mechanical

Temp. Range: -55 °C ~ + 85 °C

Order Information

L-KLS1- 220B - XX -S-A

- A-Anti needle
- S-Straight Pin
- No.of pins (04 ~36 pins)
- Series No.
- RoHS



Proper Cable

GENERAL TOLERANCE	ANGLE TOLERANCE	PROJECTION	Description:
X. ±0.15	X. ±5°	UNITS	CONN FFC 1.25mm THR 180°,Anti needle
.X ±0.03	.X ±3°	SHEET SIZE	
.XX ±0.05	.XX ±2°	KLS P/N:	

Draw by: Date	2018-03-10
Check by: Date	2018-03-10
SCALE	SHEET OF



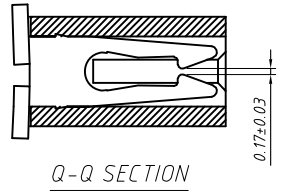
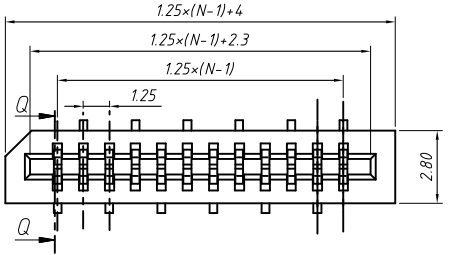
NingBo KLS ELECTRONIC CO.,L TD.

RoHS Compliant

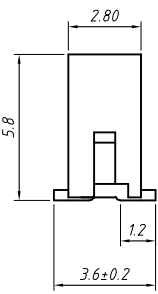
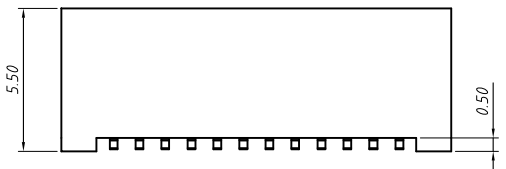
**Material**  
 Insulator: Glass-Reinforced Thermoplastic  
 Contact: Copper Alloy, Tin/Lead Plated Over Nickel

**Electrical**  
 Current rating: 0.5 A  
 Withstanding Voltage: 500 V  
 Insulation resistance: 1000M $\Omega$ .Min.  
 Contact resistance: 30 m $\Omega$ .max.

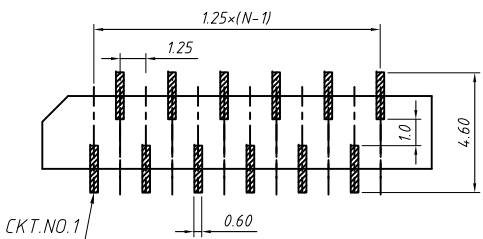
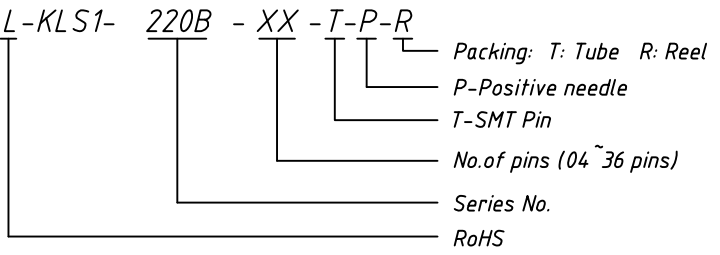
**Mechanical**  
 Temp. Range: -55 °C ~ +85 °C



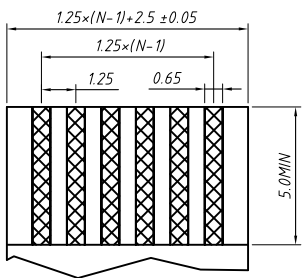
Q-Q SECTION



**Order Information**



PCB Layout



Proper Cable

GENERAL TOLERANCE		ANGLE TOLERANCE		PROJECTION		Description:	
X	±0.15	X	±5°	UNITS	mm	CONN FFC 1.25mm, SMD Vertical, Positive needle L-KLS1-220B-XX-T-P-R	
.X	±0.03	.X	±3°	SHEET SIZE	A4		
.XX	±0.05	.XX	±2°	KLS P/N:			
Draw by: Date		2018-03-10		 NingBo KLS ELECTRONIC CO.,L TD.			
Check by: Date		2018-03-10					
SCALE		SHEET				OF	

RoHS Compliant

**Material**  
 Insulator: Glass-Reinforced Thermoplastic  
 Contact: Copper Alloy, Tin/Lead Plated Over Nickel

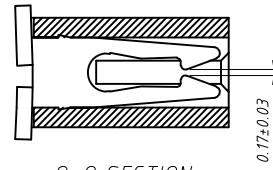
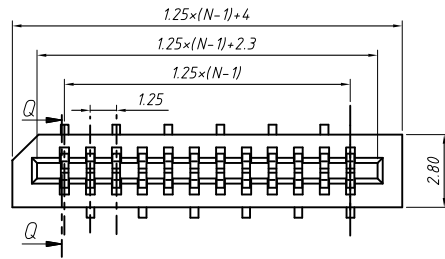
**Electrical**  
 Current rating: 0.5 A  
 Withstanding Voltage: 500 V  
 Insulation resistance: 1000M $\Omega$ .Min.  
 Contact resistance: 30 m $\Omega$ .max.

**Mechanical**  
 Temp. Range: -55 °C ~ +85 °C

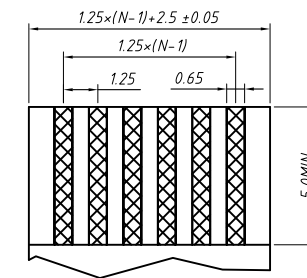
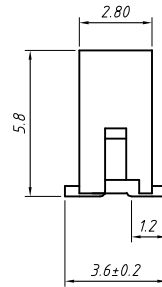
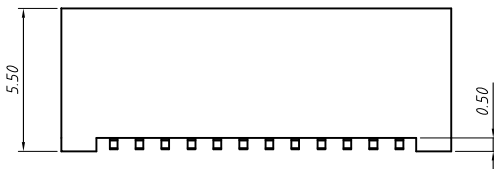
**Order Information**

L-KLS1- 220B - XX - T-A-R

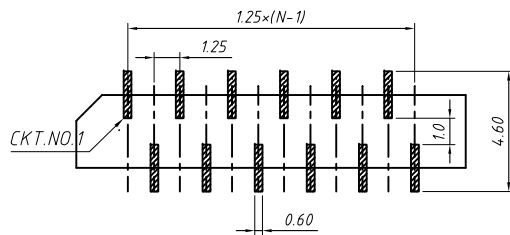
- Packing: T: Tube R: Reel
- A-Anti needle
- T-SMT Pin
- No. of pins (04 ~ 36 pins)
- Series No.
- RoHS



Q-Q SECTION



Proper Cable



PCB Layout

GENERAL TOLERANCE		ANGLE TOLERANCE		PROJECTION	Description:
X	±0.15	X	±5°		CONN FFC 1.25mm, SMD Vertical, Anti needle
.X	±0.03	.X	±3°	mm	
.XX	±0.05	.XX	±2°	A4	
				KLS P/N:	L-KLS1-220B-XX-T-A-R
Draw by: Date		2018-03-10			NingBo KLS ELECTRONIC CO.,L TD.
Check by: Date		2018-03-10			
SCALE		SHEET	OF		