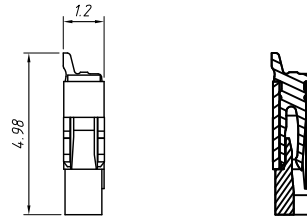
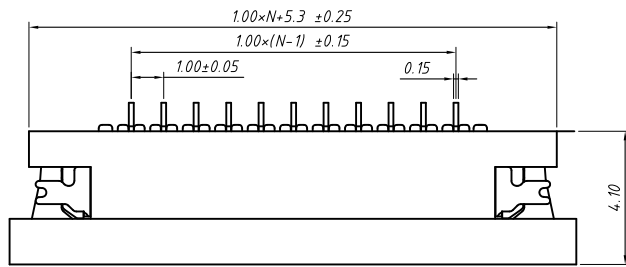


Proper Cable

Material
 Housing:LCP ,UL 94 V-0
 Actuator:LCP ,UL 94 V-0
 Contacts:Copper Alloy, Tin Over Nickel
 PEG:Copper Alloy, Tin Over Nickel

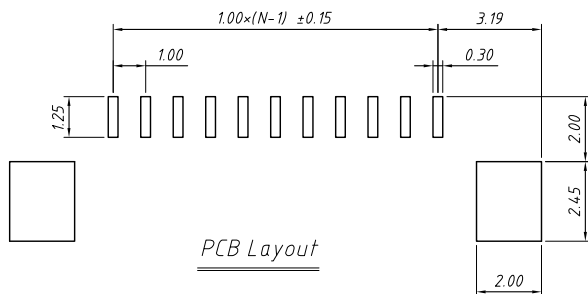
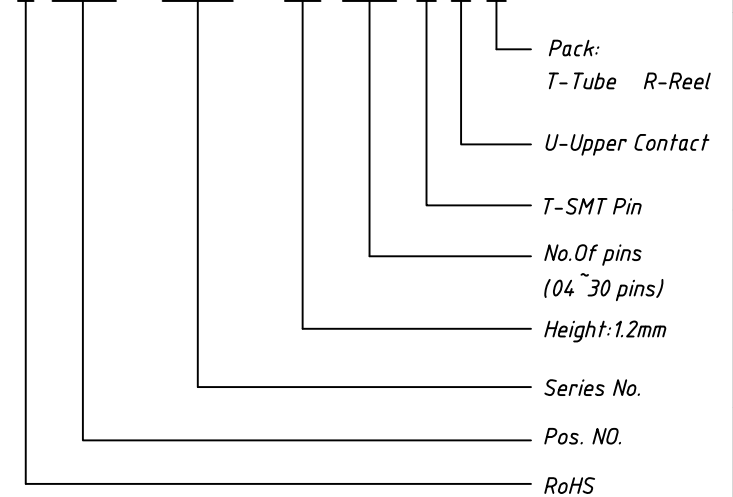
Electrical
 Voltage rating: 50 V
 Current Rating: 0.3 A

Mechanical
 Temp. Range: -25 °C ~ + 85 °C



Order Information

L-KLS1- 1240S - 1.2- XX -T-U-R

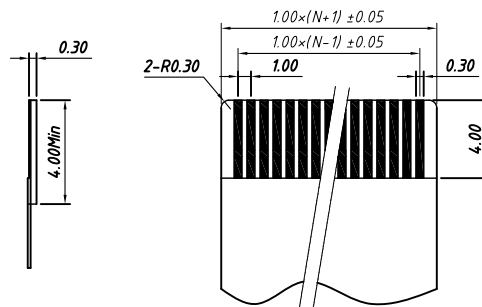
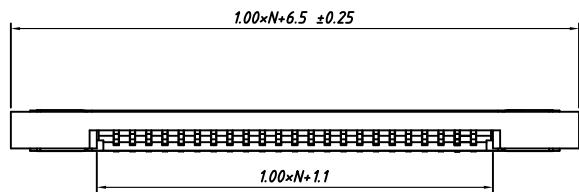


GENERAL TOLERANCE	ANGLE TOLERANCE	PROJECTION	Description:
X. ±0.15	X. ±5°	UNITS	mm
.X ±0.03	.X ±3°	SHEET SIZE	A4
.XX ±0.05	.XX ±2°	KLS P/N:	L-KLS1-1240S-1.2-XX-T-U-R

Draw by: Date	2018-03-10
Check by: Date	2018-03-10
SCALE	SHEET OF

KLS
 NingBo KLS ELECTRONIC CO.,L TD.

CONN FFC 1.00mm,
 SMD,Horizontal, Upper Contact ,with ZIF

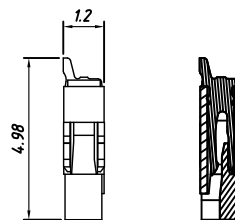
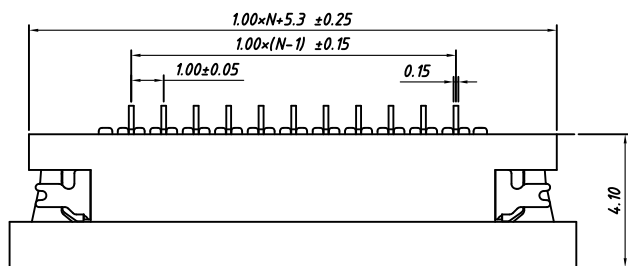


Proper Cable

Material
 Housing:LCP,UL 94V-0
 Actuator:LCP,UL 94V-0
 Contacts:Copper Alloy,Tin Over Nickel
 PEG:Copper Alloy,Tin Over Nickel

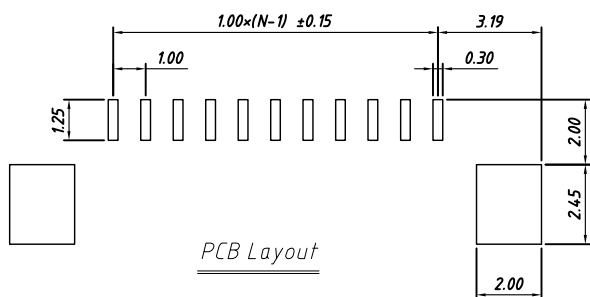
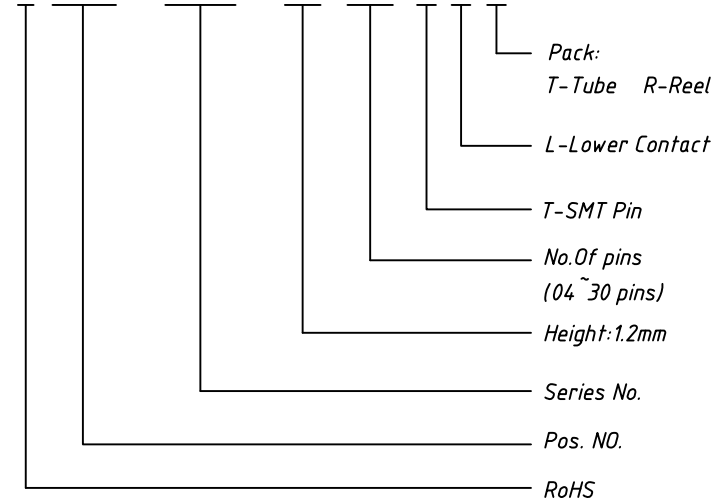
Electrical
 Voltage rating: 50 V
 Current Rating: 0.3 A

Mechanical
 Temp. Range: -25 °C ~ + 85 °C



Order Information

L-KLS1- 1240T - 1.2- XX -T-L-R



GENERAL TOLERANCE	ANGLE TOLERANCE	PROJECTION	Description:
X. ±0.15	X. ±5°	UNITS	CONN FFC 1.00mm,
.X ±0.03	.X ±3°	SHEET SIZE	SMD,Horizontal,Lower Contact , with ZIF
.XX ±0.05	.XX ±2°	KLS P/N:	L-KLS1-1240T-1.2-XX-T-L-R

Draw by: Date	2018-03-10
Check by:: Date	2018-03-10
SCALE	SHEET OF



NingBo KLS ELECTRONIC CO.,L TD.