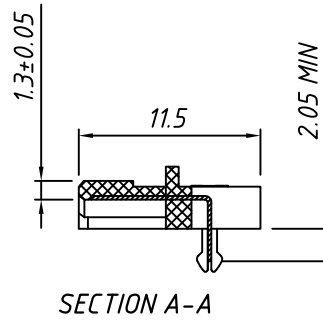
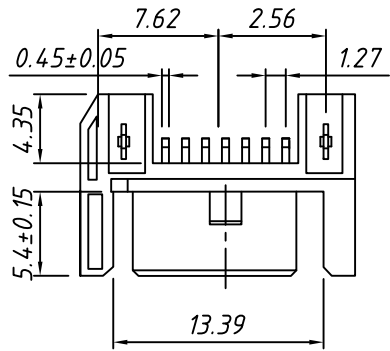


1 RoHS Compliance

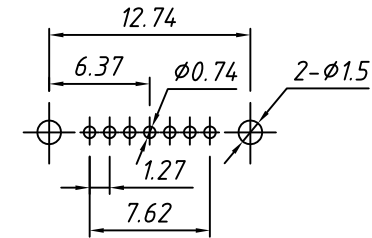
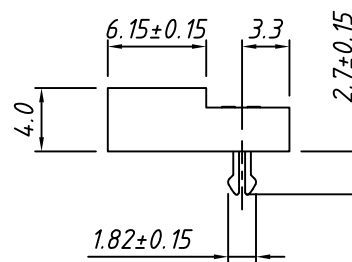
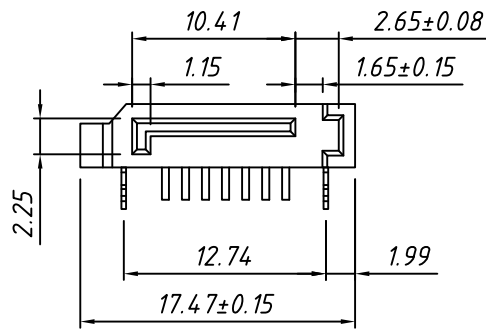


**MATERIAL:**

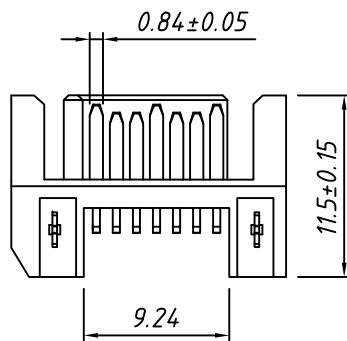
Housing: Thermoplastic, UL 94-V0  
 Contact: Copper alloy, 50u" min. Nickel plating  
 Overall; 100u" min. Tin on solder tail;  
 Gold plating on contact area.  
 Hook: Copper alloy, Nickel and Tin plating overall.

**ELECTRICAL:**

Contact Resistance: 25 mΩ Max.  
 Insulation Resistance: 1000 MΩ Min.  
 Dielectric Withstanding Voltage: 500VRMS Min.

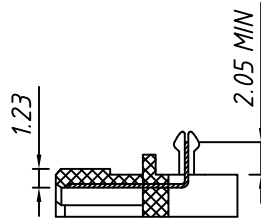
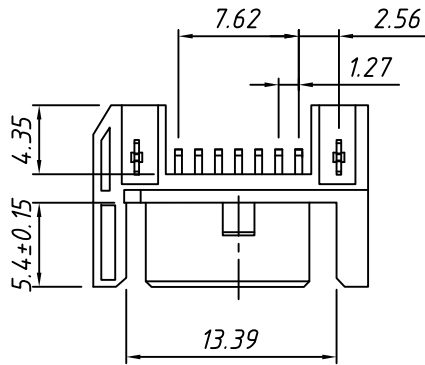


Recommend PC Board Layout  
 (Top layer , Thickness: 1.60mm)

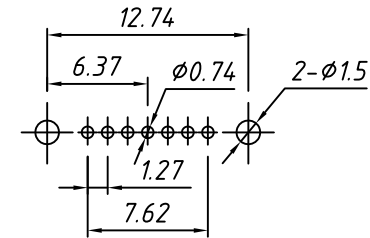
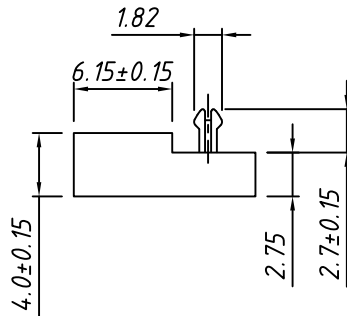
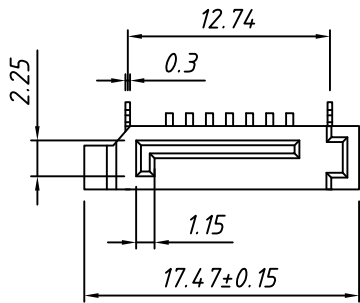


TOLERANCE		Description:		SATA Type A 7P Male Connector, Right Angle	
.X ±0.30	PROJECTION				
.XX ±0.20	UNITS	mm			
.XXX ±0.10	SHEET	A4	KLS P/N:	L-KLS1-SATA007 A	
X. ±2°	Draw:	Daniel		NingBo KLS ELECTRONIC CO.,LTD.	
.X ±1°	Check:	Daniel			
.XX ±0.5°	Date	2018-03-01			

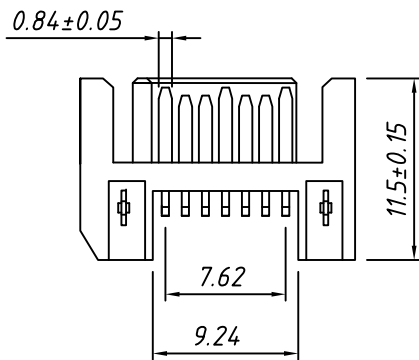
1  
RoHS Compliance



SECTION A-A



Recommend PC Board Layout  
(Top layer , Thickness:1.60mm)



MATERIAL:

Housing: Thermoplastic, UL 94-V0  
Contact: Copper alloy, 50u" min. Nickel plating  
Overall; 100u" min. Tin on solder tail;  
Gold plating on contact area.  
Hook: Copper alloy, Nickel and Tin plating overall.

ELECTRICAL:

Contact Resistance: 25 mΩ Max.  
Insulation Resistance: 1000 MΩ Min.  
Dielectric Withstanding Voltage: 500VRMS Min.

TOLERANCE		Description:	SATA Type B 7P Male Connector, Right Angle	
.X ±0.30	PROJECTION			
.XX ±0.20	UNITS	mm		
.XXX ±0.10	SHEET	A4	KLS P/N:	L-KLS1-SATA007 B
X. ±2°	Draw:	Daniel		NingBo KLS ELECTRONIC CO.,LTD.
.X ±1°	Check:	Daniel		
.XX ±0.5°	Date	2018-03-01		