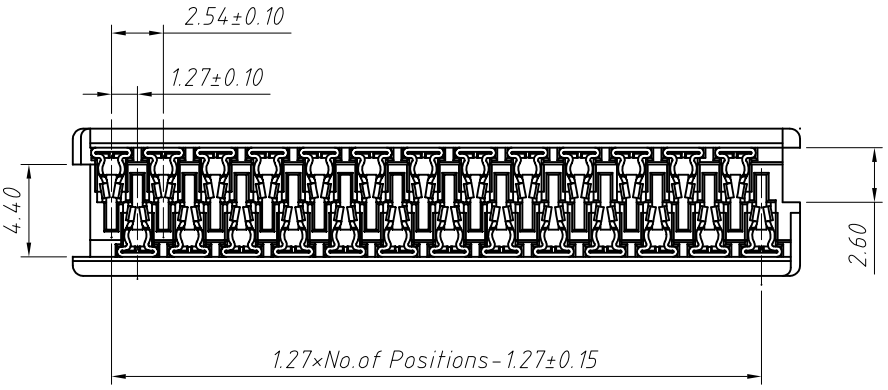
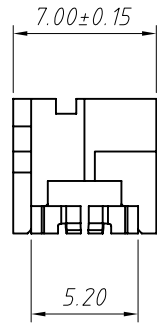
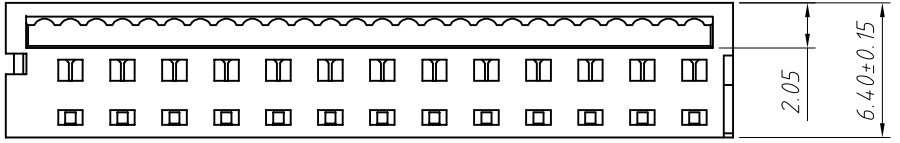
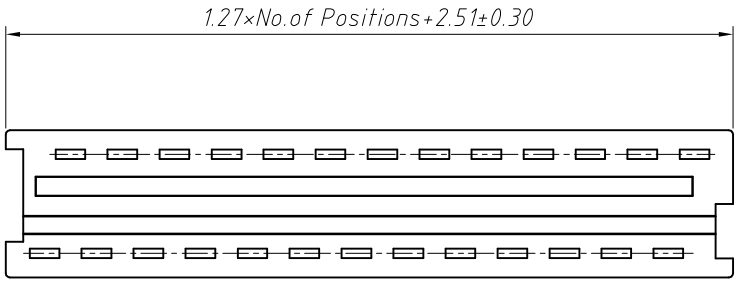


1
RoHS Compliance



Material:
 Housing: 30% Glass filled PBT UL94V-0
 Contacts: Phosphor Bronze
 Plating: Sn over 50u" nickel
 Applicable Wire: 26AWG and 28AWG

Electrical Characteristics:
 Current Rating: 1.0 AMP
 Voltage Rating: 250V AC
 Insulator Resistance: 1000M Ohm min.
 Withstand Voltage: 500V AC / Minute
 Contact Resistance: 20m Ohm max.
 Operating Temperature: -40°C ~ +105°C

Order Information:
 L-KLS1-206-XX-W
 L: RoHS
 IDC connectors
 1.27mm Pitch
 XX-No. of 06 ~ 26pin
 Color: W=White

ANGLE TOLERANCE	PROJECTION	Description:	
±3°		1.27mm Pitch Molex 90327 Picoflex IDC Connector	
GENERAL TOLERANCE	UNITS	mm	KLS P/N:
x.x ±0.30	SHEET SIZE	A4	L-KLS1-206-XX-W
x.xx ±0.20	Draw:	Daniel	2018-07-10
x.xxx ±0.10	Check:	Daniel	2018-07-10



NingBo KLS ELECTRONIC CO.,L TD.