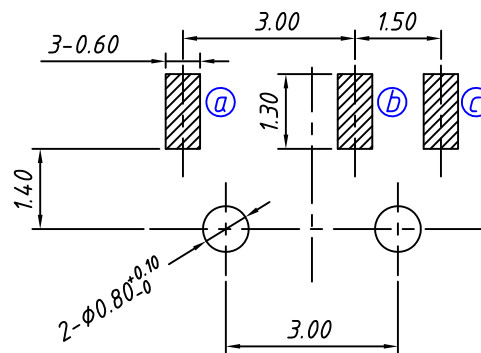
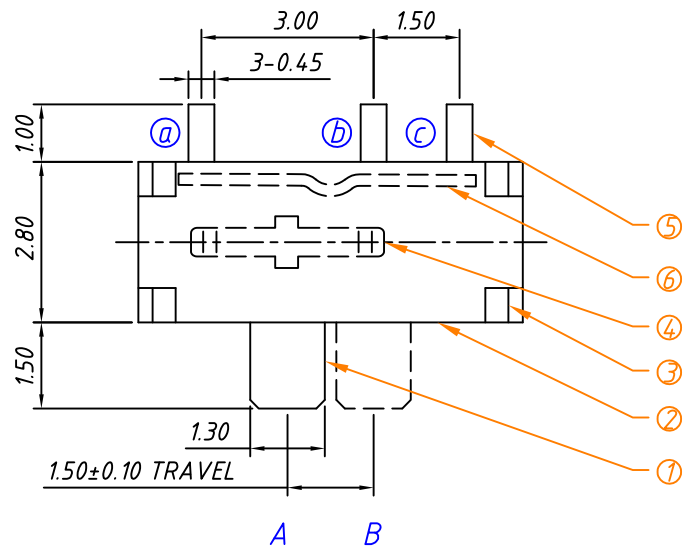


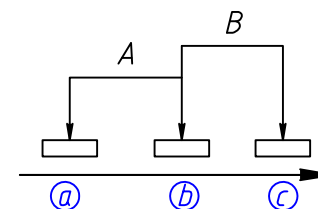
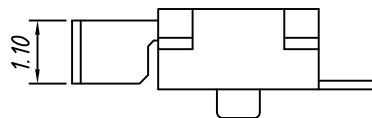
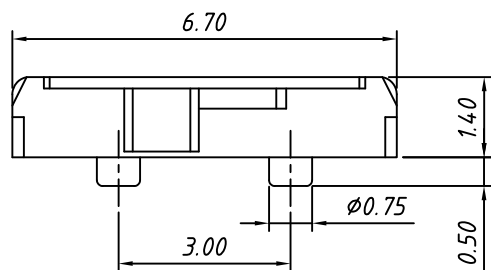
1 RoHS Compliance



PCB LAYOUT

ELECTRICAL
 Rating: 0.3A 6V DC
 Function: 1P2T
 Timing: Non-shorting
 Contact Resistance: 70mΩ Max.
 Insulation Resistance: 100MΩ Min. at 500V DC
 Dielectric Strength: AC 500V for 1 min
 Operating Temper: -20°C ~ +75°C
 Operating Force: 250 ± 150gf
 Life Test: 10000 Cycles
 PACKING: 3000PCS/Reel

Order Information:
 L-KLS7-MSS-1290BN
 RoHS
 SPDT



CIRCUIT

6	STRETCH PIECE	SUS	NATURAL	1
5	TERMINAL A/B/C	C2680	Ag PLATED	3
4	CONTACT	C5210	Ag PLATED	1
3	BOTTOM	PA46	Black	1
2	COVER	SUS	Ag PLATED	1
1	STEM	PA46	Black	1
NO.	PARTS	MATERIAL	FINISHING & COLOR	Q'TY

GENERAL TOLERANCE	PROJECTION		Description:
X. ±0.20	UNITS	mm	Mini Slide Switch,
	SCALE	1:1	6.7x2.8x1.4mm, SPDT SMD Horizontal
	Draw by:	Daniel	KLS P/N: L-KLS7-MSS-1290BN
ANGLE TOLERANCE	Check by:	Daniel	NingBo KLS ELECTRONIC CO.,L TD.
±3°	Date	2020-08-30	
	SHEET	1 OF 1	