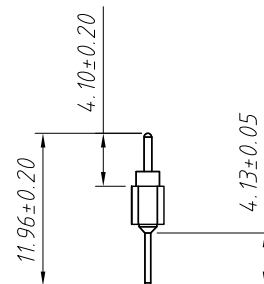
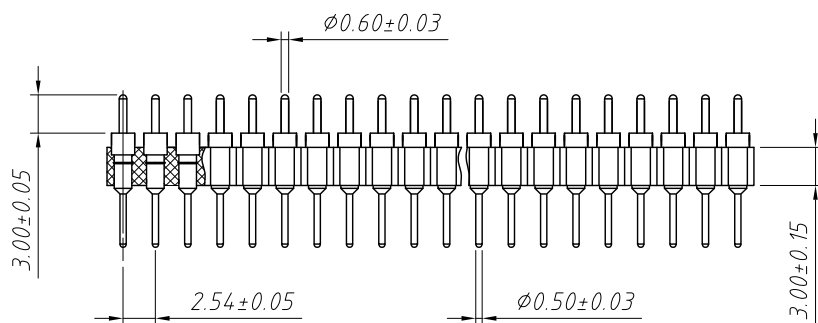


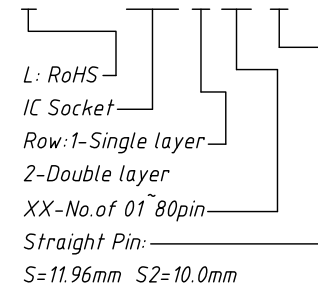
Material:
Housing: 30% Glass filled PPS UL94V-0
Contacts: Brass
Plating: Gold plated over 50u" nickel

Electrical Characteristics:
Current Rating: 3.0 AMP
Voltage Rating: 60V AC/DC
Insulator Resistance: 1000M Ω min at 100V AC
Contact Resistance: 20m Ω max.
Operating Temperature: -40°C ~ +105°C



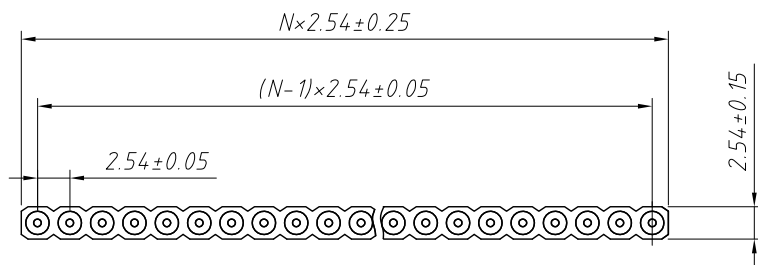
Order Information:

L-KLS1-209X-1-XX-S



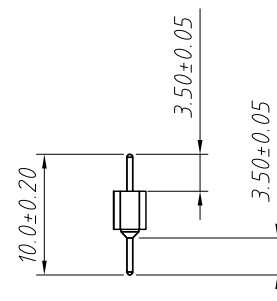
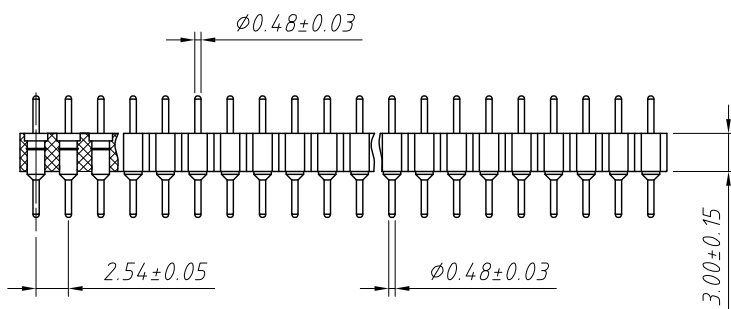
S=11.96mm S2=10.0mm

GENERAL TOLERANCE	PROJECTION		Description:
X. ± 0.50	UNITS	mm	2.54mm IC Swiss Round Pin Header Connector
.X ± 0.25	SCALE	1:1	
.XX ± 0.10	Draw by:	Jenny	
ANGLE TOLERANCE	Check by:		L-KLS P/N: L-KLS1-209X-1-XX-S
X. $\pm 5^\circ$	Date	2018-03-01	NingBo KLS ELECTRONIC CO.,L TD.
.X $\pm 3^\circ$	SHEET	1 OF 1	
.XX $\pm 2^\circ$			



Material:
 Housing: 30% Glass filled PPS UL94V-0
 Contacts: Brass
 Plating: Gold plated over 50u" nickel

Electrical Characteristics:
 Current Rating: 3.0 AMP
 Voltage Rating: 60V AC/DC
 Insulator Resistance: 1000M Ω min at 100V AC
 Contact Resistance: 20m Ω max.
 Operating Temperature: -40°C ~ +105°C

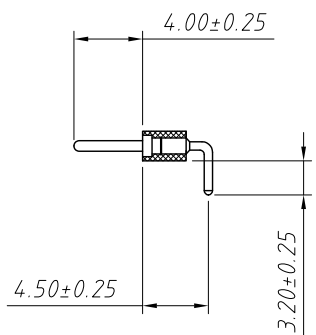
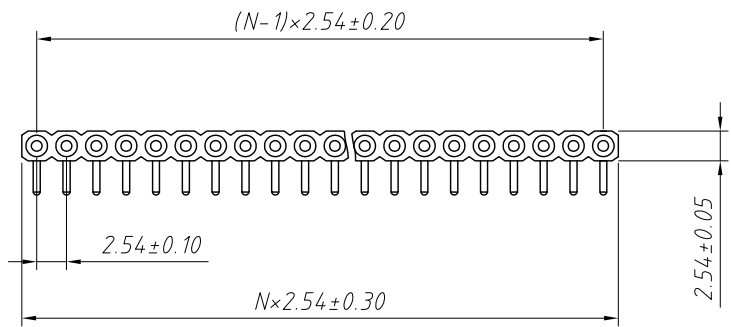


Order Information:

L-KLS1-209X-1-XX-S2

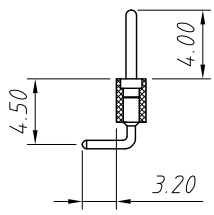
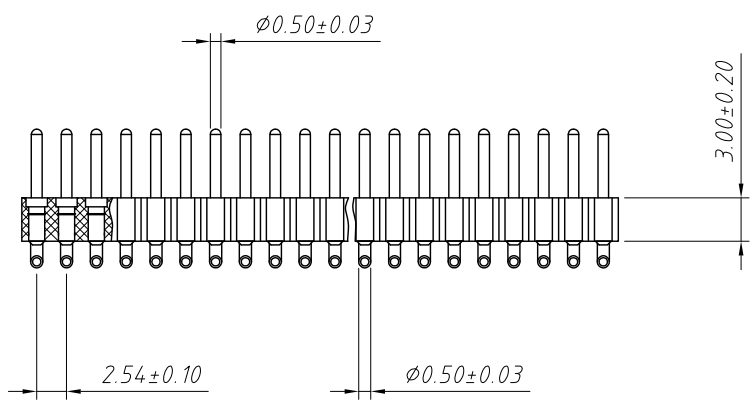
L: RoHS
 IC Socket
 Row: 1-Single layer
 2-Double layer
 XX-No. of 01 ~ 80pin
 Straight Pin:
 S=11.96mm S2=10.0mm

GENERAL TOLERANCE	PROJECTION		Description:
X. ± 0.50	UNITS	mm	2.54mm IC Swiss Round Pin Header Connector
.X ± 0.25	SCALE	1:1	
.XX ± 0.10	Draw by:	Jenny	
ANGLE TOLERANCE	Check by:		L-KLS1-209X-1-XX-S2
X. $\pm 5^\circ$	Date	2018-03-01	NingBo KLS ELECTRONIC CO.,L TD.
.X $\pm 3^\circ$	SHEET	1 OF 1	
.XX $\pm 2^\circ$			



Material:
 Housing: 30% Glass filled PPS UL94V-0
 Contacts: Brass
 Plating: Gold plated over 50u" nickel

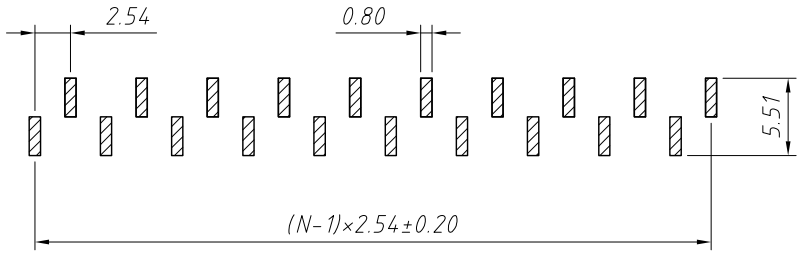
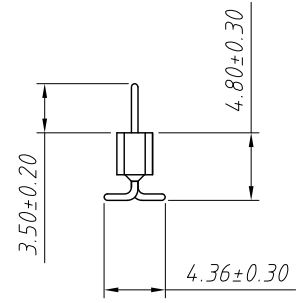
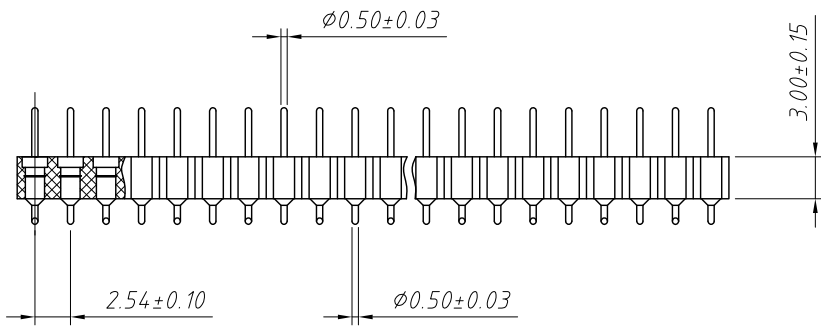
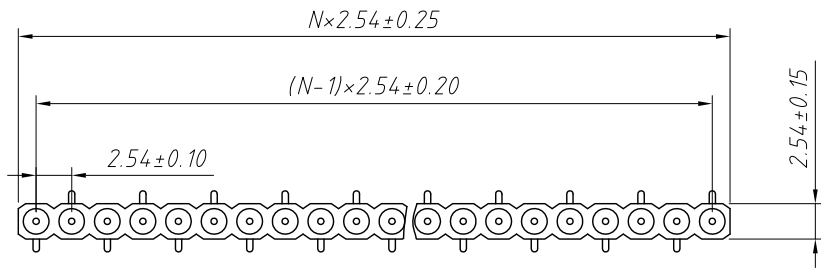
Electrical Characteristics:
 Current Rating: 3.0 AMP
 Voltage Rating: 60V AC/DC
 Insulator Resistance: 1000M Ω min at 100V AC
 Contact Resistance: 20m Ω max.
 Operating Temperature: -40°C ~ +105°C



Order Information:
 L-KLS1-209X-1-XX-R

L: RoHS
 IC Socket
 Row: 1-Single layer
 2-Double layer
 XX-No. of 01 ~ 80pin
 R-Right Angle Pin

GENERAL TOLERANCE	PROJECTION		Description:
X. ± 0.50	UNITS	mm	2.54mm IC Swiss Round Pin Header Connector
.X ± 0.25	SCALE	1:1	
.XX ± 0.10	Draw by:	Jenny	
ANGLE TOLERANCE	Check by:		KLS P/N: L-KLS1-209X-1-XX-R
X. $\pm 5^\circ$	Date	2018-03-01	NingBo KLS ELECTRONIC CO.,L TD.
.X $\pm 3^\circ$	SHEET	1 OF 1	
.XX $\pm 2^\circ$			



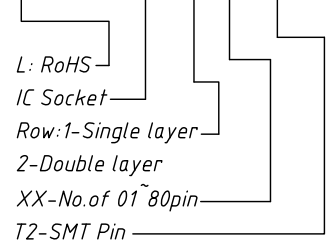
Recommended P.C.B Layout

Material:
Housing: 30% Glass filled PPS UL94V-0
Contacts: Brass
Plating: Gold plated over 50u" nickel

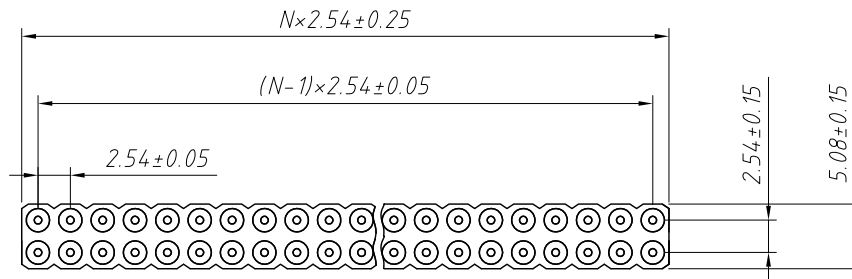
Electrical Characteristics:
Current Rating: 3.0 AMP
Voltage Rating: 60V AC/DC
Insulator Resistance: 1000M Ω min at 100V AC
Contact Resistance: 20m Ω max.
Operating Temperature: -40°C ~ +105°C

Order Information:

L-KLS1-209X-1-XX-T2

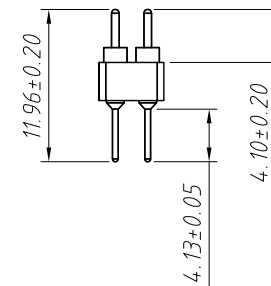
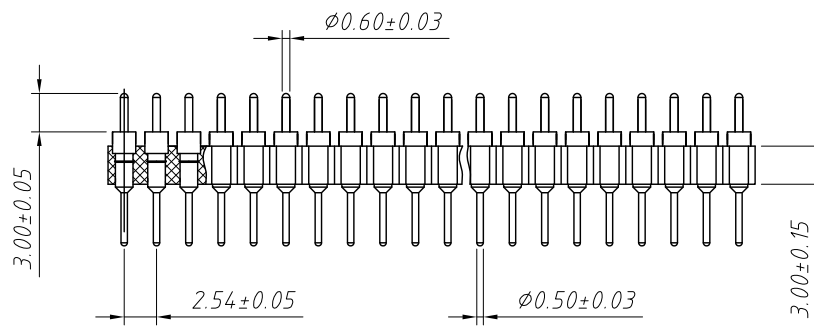


GENERAL TOLERANCE	PROJECTION		Description:
X. ± 0.50	UNITS	mm	2.54mm IC Swiss Round Pin Header Connector
.X ± 0.25	SCALE	1:1	
.XX ± 0.10	Draw by:	Jenny	
ANGLE TOLERANCE	Check by:		KLS P/N: L-KLS1-209X-1-XX-T2
X. $\pm 5^\circ$	Date	2018-03-01	NingBo KLS ELECTRONIC CO.,L TD.
.X $\pm 3^\circ$	SHEET	1 OF 1	
.XX $\pm 2^\circ$			



Material:
 Housing: 30% Glass filled PPS UL94V-0
 Contacts: Brass
 Plating: Gold plated over 50u" nickel

Electrical Characteristics:
 Current Rating: 3.0 AMP
 Voltage Rating: 60V AC/DC
 Insulator Resistance: 1000M Ω min at 100V AC
 Contact Resistance: 20m Ω max.
 Operating Temperature: -40°C ~ +105°C

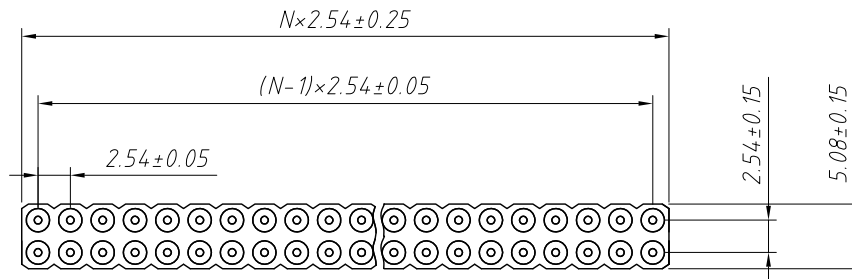


Order Information:

L-KLS1-209X-2-XX-S

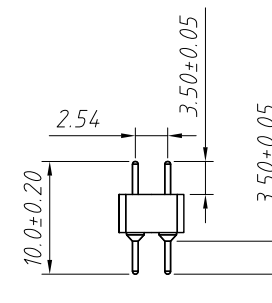
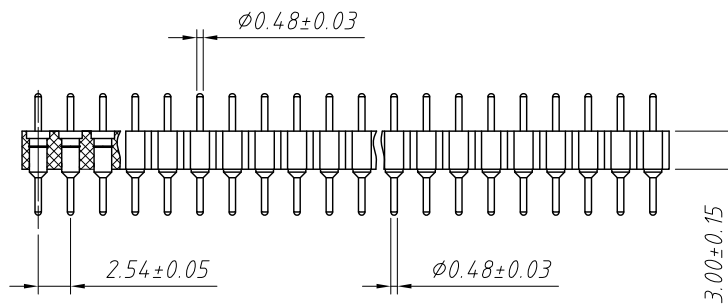
L: RoHS
 IC Socket
 Row: 1-Single layer
 2-Double layer
 XX-No. of 01 ~ 80pin
 Straight Pin:
 S=11.96mm S2=10.0mm

GENERAL TOLERANCE	PROJECTION		Description:
X. ±0.50	UNITS	mm	2.54mm IC Swiss Round Pin Header Connector
.X ±0.25	SCALE	1:1	
.XX ±0.10	Draw by:	Jenny	
ANGLE TOLERANCE	Check by:		L-KLS1-209X-2-XX-S
X. ±5°	Date	2018-03-01	NingBo KLS ELECTRONIC CO.,L TD.
.X ±3°	SHEET	1 OF 1	
.XX ±2°			



Material:
 Housing: 30% Glass filled PPS UL94V-0
 Contacts: Brass
 Plating: Gold plated over 50u" nickel

Electrical Characteristics:
 Current Rating: 3.0 AMP
 Voltage Rating: 60V AC/DC
 Insulator Resistance: 1000M Ω min at 100V AC
 Contact Resistance: 20m Ω max.
 Operating Temperature: -40°C ~ +105°C

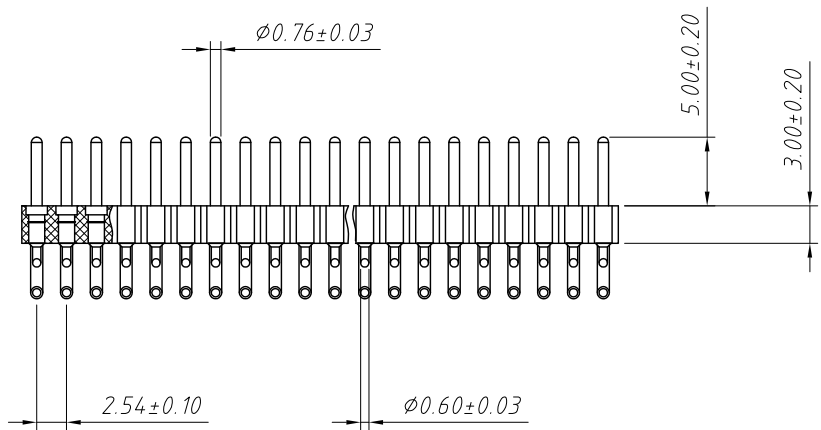
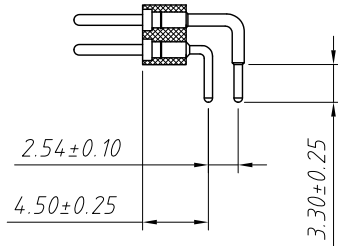
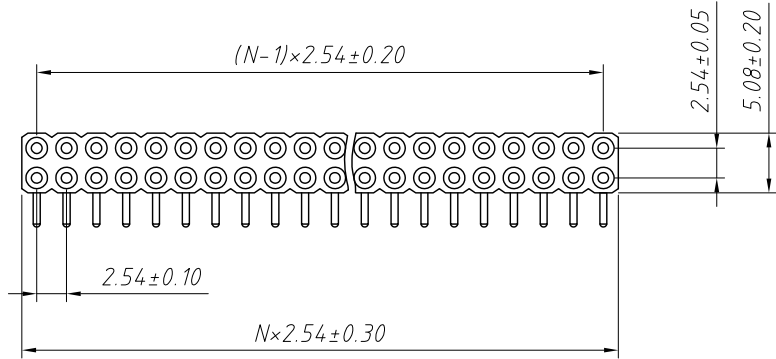


Order Information:

L-KLS1-209X-2-XX-S2

L: RoHS
 IC Socket
 Row: 1-Single layer
 2-Double layer
 XX-No. of 01 ~ 80pin
 Straight Pin:
 S=11.96mm S2=10.0mm

GENERAL TOLERANCE	PROJECTION		Description:
X. ± 0.50	UNITS	mm	2.54mm IC Swiss Round Pin Header Connector
.X ± 0.25	SCALE	1:1	
.XX ± 0.10	Draw by:	Jenny	
ANGLE TOLERANCE	Check by:		L-KLS1-209X-2-XX-S2
X. $\pm 5^\circ$	Date	2018-03-01	NingBo KLS ELECTRONIC CO.,L TD.
.X $\pm 3^\circ$	SHEET	1 OF 1	
.XX $\pm 2^\circ$			

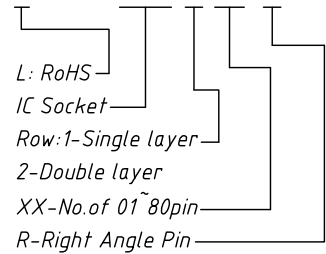


Material:
Housing: 30% Glass filled PPS UL94V-0
Contacts: Brass
Plating: Gold plated over 50u" nickel

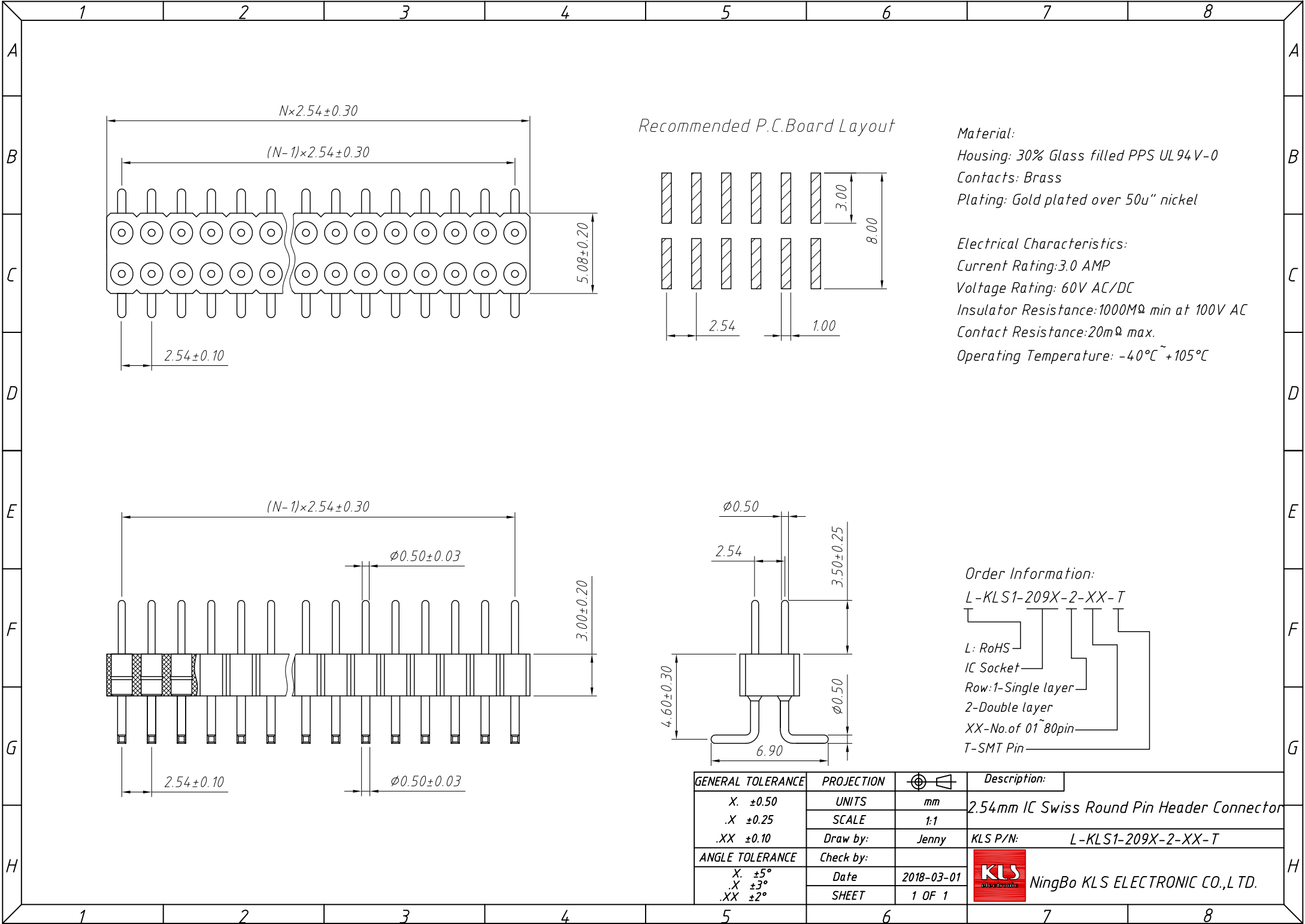
Electrical Characteristics:
Current Rating: 3.0 AMP
Voltage Rating: 60V AC/DC
Insulator Resistance: 1000M Ω min at 100V AC
Contact Resistance: 20m Ω max.
Operating Temperature: -40°C ~ +105°C

Order Information:

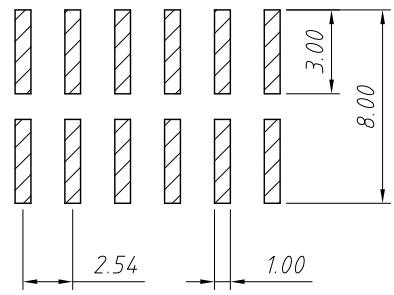
L-KLS1-209X-2-XX-R



GENERAL TOLERANCE	PROJECTION		Description:
X. ± 0.50	UNITS	mm	2.54mm IC Swiss Round Pin Header Connector
.X ± 0.25	SCALE	1:1	
.XX ± 0.10	Draw by:	Jenny	
ANGLE TOLERANCE	Check by:		L-KLS1-209X-2-XX-R
X. $\pm 5^\circ$	Date	2018-03-01	NingBo KLS ELECTRONIC CO.,L TD.
.X $\pm 3^\circ$	SHEET	1 OF 1	
.XX $\pm 2^\circ$			



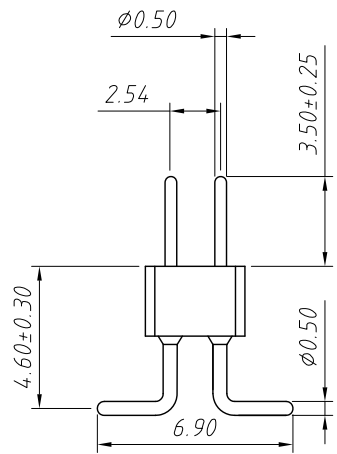
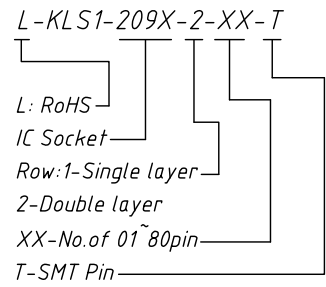
Recommended P.C.Board Layout



Material:
Housing: 30% Glass filled PPS UL94V-0
Contacts: Brass
Plating: Gold plated over 50u" nickel

Electrical Characteristics:
Current Rating: 3.0 AMP
Voltage Rating: 60V AC/DC
Insulator Resistance: 1000M Ω min at 100V AC
Contact Resistance: 20m Ω max.
Operating Temperature: -40°C ~ +105°C

Order Information:



GENERAL TOLERANCE	PROJECTION		Description:
X. ±0.50	UNITS	mm	2.54mm IC Swiss Round Pin Header Connector
.X ±0.25	SCALE	1:1	
.XX ±0.10	Draw by:	Jenny	
ANGLE TOLERANCE	Check by:		KLS P/N: L-KLS1-209X-2-XX-T
X. ±5°	Date	2018-03-01	NingBo KLS ELECTRONIC CO.,L TD.
.X ±3°	SHEET	1 OF 1	
.XX ±2°			