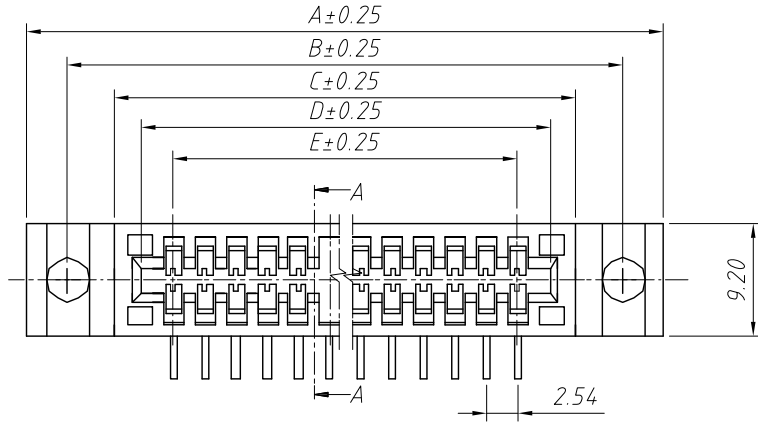


RoHS Compliance



**Order Information:**

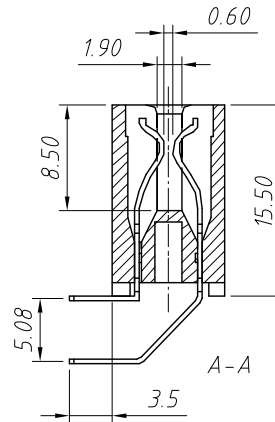
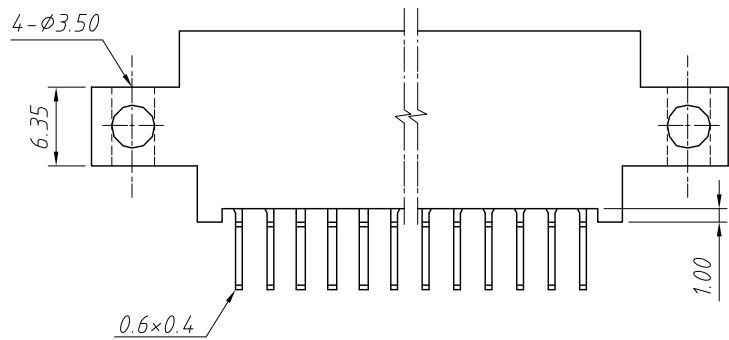
L-KLS1-603D-XX-R

L: RoHS  
603D-With Ear  
XX-No. of 12-100pin

Type: \_\_\_\_\_  
S-Straight pin  
R-Right Angle Pin

**Dimension**

Contact no	A	B	C	D
24	51.69	45.09	33.22	27.94
44	77.09	70.49	58.62	53.34
48	82.17	75.57	63.70	58.42
50	84.71	78.11	66.24	60.96
56	92.33	85.73	73.86	68.58
60	97.41	90.81	78.94	73.66
70	110.11	103.51	91.64	86.36
72	112.65	116.06	94.18	88.90
76	130.43	123.83	111.96	106.68
88	133.17	126.57	114.50	109.22
100	148.21	141.61	129.74	124.46



**Material:**

Housing: Glass filled PBT UL94V-0

Contacts: Brass or Phosphor Bronze

Plating: Contact gold and Dip Tin over Nickel

**Electrical Characteristics:**

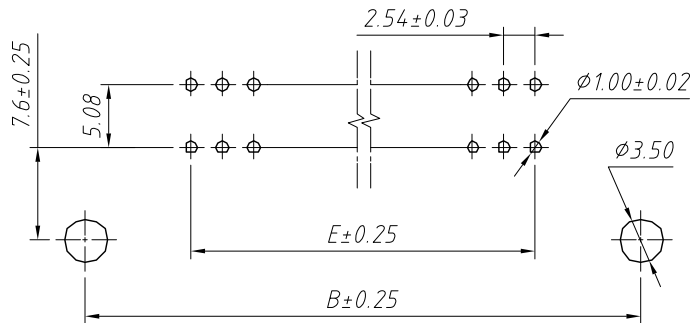
Current Rating: 2 AMP

Insulator Resistance: 1000M Ohm min. at DC 500V DC

Contact Resistance: 30m Ohm max. at DC 100mA

Withstanding Voltage: 1000V AC /rms 50Hz for 1 minute

Operating Temperature: -45° C ~ +105° C

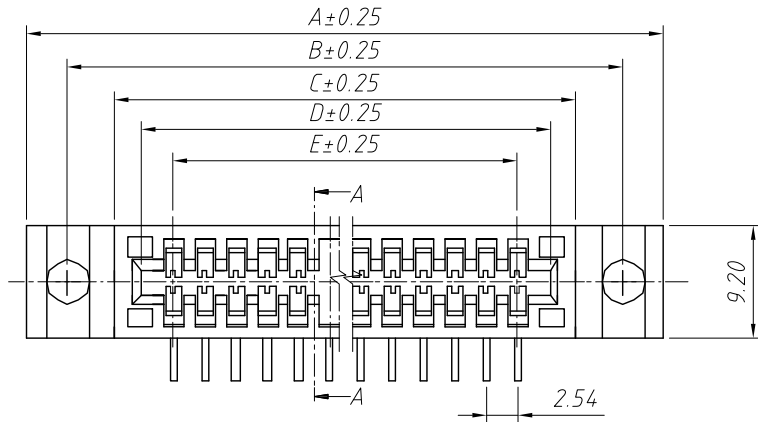


ANGLE TOLERANCE	PROJECTION	Description:
±3°		2.54mm Pitch Edge Card Connector Slot PCB Dip 90 Type
GENERAL TOLERANCE	UNITS	mm
x.x ±0.30	SHEET SIZE	A4
x.xx ±0.20	Draw:	Daniel 2020-11-11
x.xxx ±0.10	Check:	Daniel 2020-11-11



NingBo KLS ELECTRONIC CO.,L TD.

RoHS Compliance



Order Information:

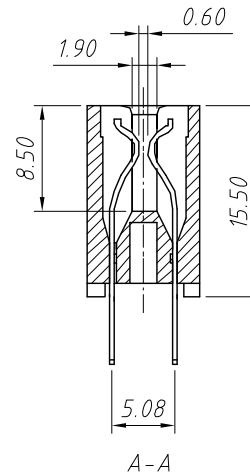
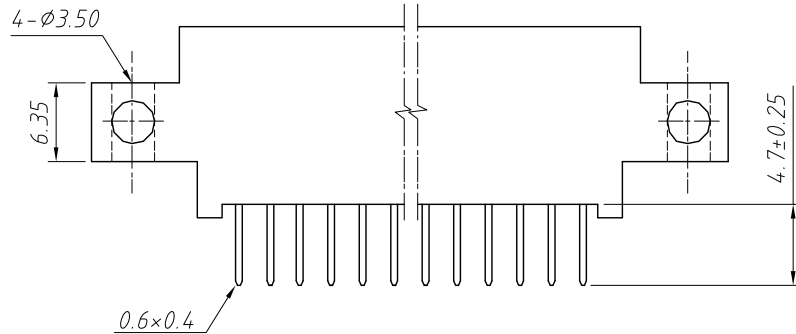
L-KLS1-603D-XX-S

L: RoHS  
603D-With Ear  
XX-No. of 12-100pin

Type: \_\_\_\_\_  
S-Straight pin  
R-Right Angle Pin

Dimension

Contact no	A	B	C	D
24	51.69	45.09	33.22	27.94
44	77.09	70.49	58.62	53.34
48	82.17	75.57	63.70	58.42
50	84.71	78.11	66.24	60.96
56	92.33	85.73	73.86	68.58
60	97.41	90.81	78.94	73.66
70	110.11	103.51	91.64	86.36
72	112.65	116.06	94.18	88.90
76	130.43	123.83	111.96	106.68
88	133.17	126.57	114.50	109.22
100	148.21	141.61	129.74	124.46



Material:

Housing: Glass filled PBT UL 94V-0

Contacts: Brass or Phosphor Bronze

Plating: Contact gold and Dip Tin over Nickel

Electrical Characteristics:

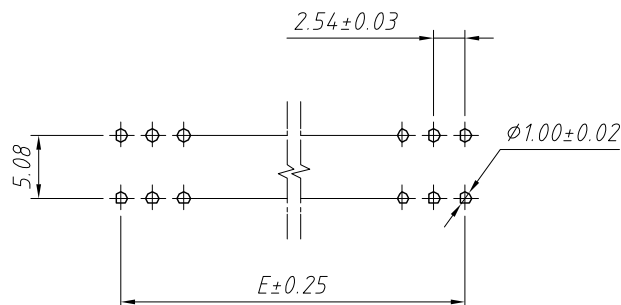
Current Rating: 2 AMP

Insulator Resistance: 1000M Ohm min. at DC 500V DC

Contact Resistance: 30m Ohm max. at DC 100mA

Withstanding Voltage: 1000V AC /rms 50Hz for 1 minute

Operating Temperature:  $-45^{\circ}C \sim +105^{\circ}C$



ANGLE TOLERANCE	PROJECTION	Description:
$\pm 3^{\circ}$		2.54mm Pitch Edge Card Connector Slot PCB Dip 90 Type
GENERAL TOLERANCE	UNITS	mm
x.x $\pm 0.30$	SHEET SIZE	A4
x.xx $\pm 0.20$	Draw:	Daniel 2020-11-11
x.xxx $\pm 0.10$	Check:	Daniel 2020-11-11



NingBo KLS ELECTRONIC CO.,L TD.