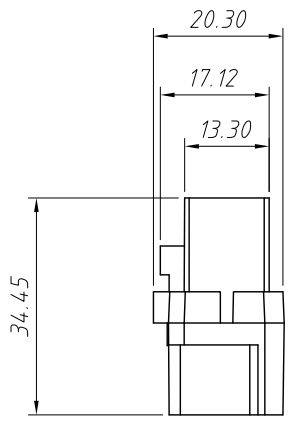
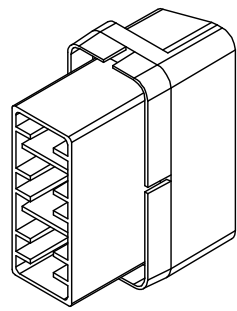


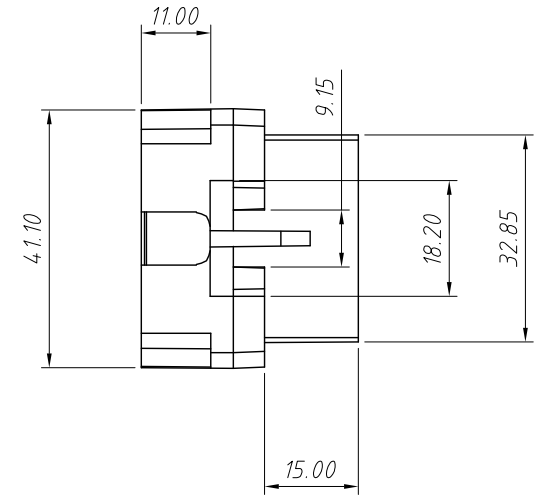
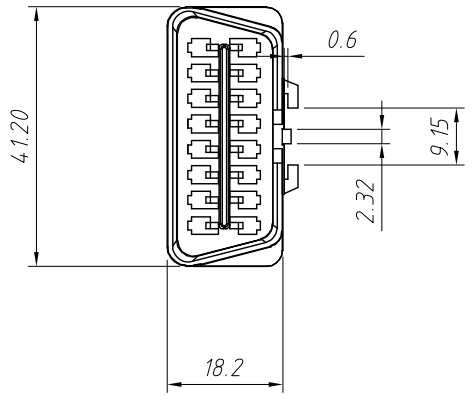
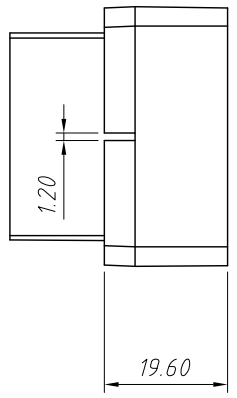
1
RoHS Compliance



Material:
Housing: PA66+15%GF, UL 94 V-0, Black Masterbatch

Electrical Characteristics:
Dielectric Strength: 1000V AC/1 Minute
Contact Resistance: 100mΩ Max
Insulator Resistance: 500VDC, 100MΩ Min

Rating and Application Wire:
Rated Voltage: 30V Max
Ambient Temperature Range: -20°C ~ +140°C



ANGLE TOLERANCE	PROJECTION	Description:		
±3°		OBD II 16P Male Crimp Housing		
GENERAL TOLERANCE	UNITS	mm	KLS P/N:	L-KLS1-OBDDII-16M002
x.x ±0.30	SHEET SIZE	A4		
x.xx ±0.20	Draw:	Daniel	2020-11-11	NingBo KLS ELECTRONIC CO.,LTD.
x.xxx ±0.10	Check:	Daniel	2020-11-11	