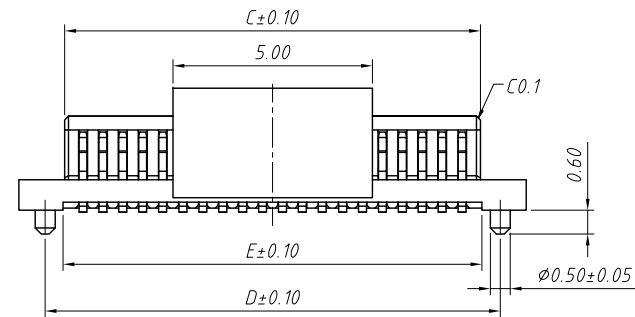
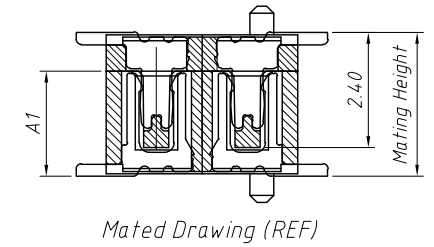
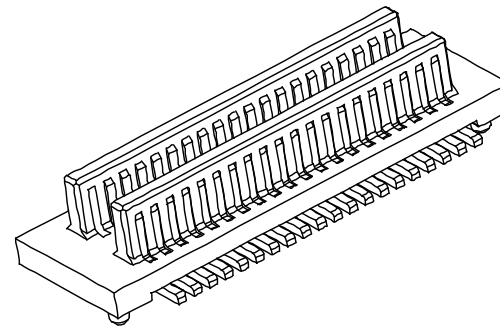
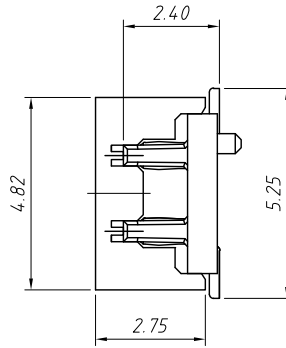
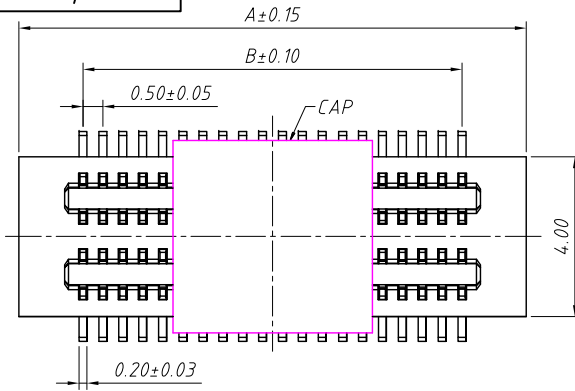
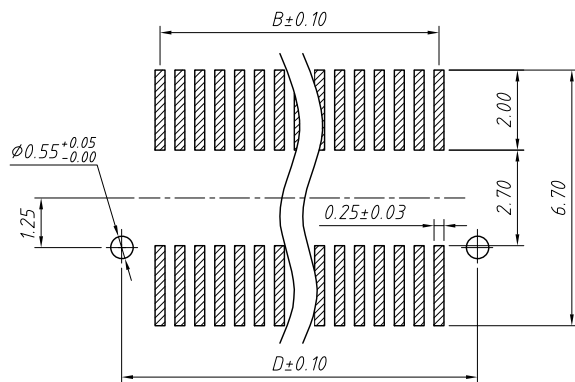
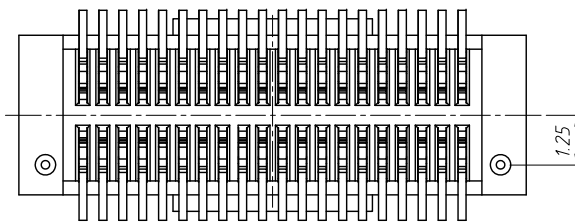


RoHS Compliance



Circuit	A	B	C	D	E
10	5.20	2.00	2.92	3.90	3.00
12	5.70	2.50	3.42	4.40	3.50
14	6.20	3.00	3.92	4.90	4.00
16	6.70	3.50	4.42	5.40	4.50
18	7.20	4.00	4.92	5.90	5.00
20	7.70	4.50	5.42	6.40	5.50
22	8.20	5.00	5.92	6.90	6.00
24	8.70	5.50	6.42	7.40	6.50
26	9.20	6.00	6.92	7.90	7.00
28	9.70	6.50	7.42	8.40	7.50
30	10.20	7.00	7.92	8.90	8.00
32	10.70	7.50	8.42	9.40	8.50
34	11.20	8.00	8.92	9.90	9.00
36	11.70	8.50	9.42	10.40	9.50
38	12.20	9.00	9.92	10.90	10.00
40	12.70	9.50	10.42	11.40	10.50
42	13.20	10.00	10.92	11.90	11.00
44	13.70	10.50	11.42	12.40	11.50
46	14.20	11.00	11.92	12.90	12.00
48	14.70	11.50	12.42	13.40	12.50
50	15.20	12.00	12.92	13.90	13.00
60	17.70	14.50	15.42	16.40	15.50
70	20.20	17.00	17.92	18.90	18.00
80	22.70	19.50	20.42	21.40	20.50
90	25.20	22.00	22.92	23.90	23.00
100	27.70	24.50	25.42	26.40	25.50
120	32.70	29.50	30.42	31.40	30.50



Mating Height Dimension

P/N Plug	P/N Socket	Mating Height
B0105-240M	B0105-220F	3.00
B0105-290M		3.50

Material and Plated

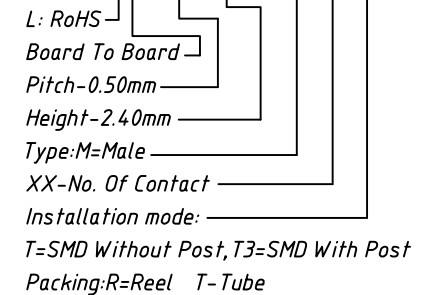
- 1.Housing:High Temp Plastic,(LCP UL94V-0)
- 2.Contact: Phosphor Bronze
- 3.Plated:Gold Plated
- 4.Package:1200pcs/Reel

Specifications:

- 1.Current Rating:0.5A AC/DC
- 2.Voltage Rating:50V AC/DC
- 3.Contact Resistance:30mΩ. max.
- 4.Insulation Resistance:100MΩ. min.
- 5.Withstanding Voltage:100V AC for one minute
- 6.Operating Temperature Range:-20°C to + 105°C

Order Information:

L-KLS1-B0105-240MXX-T3R

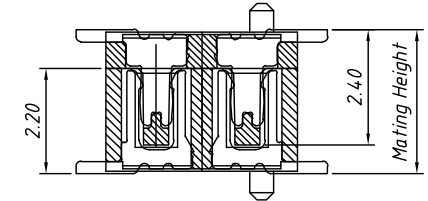
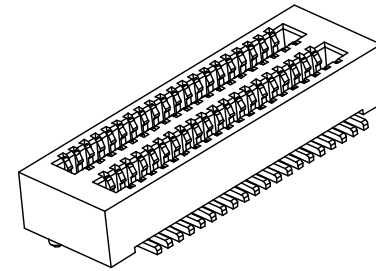
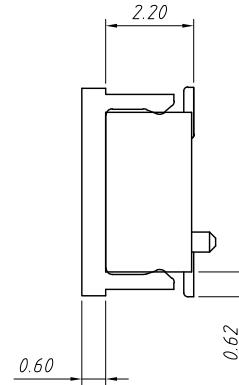
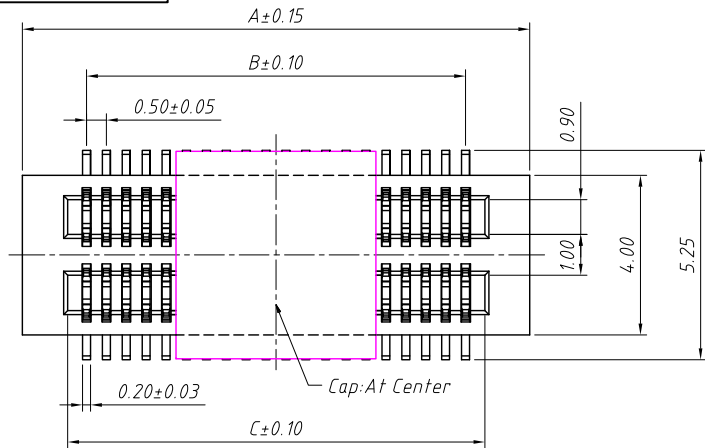


ANGLE TOLERANCE	PROJECTION	Description:	
±3°		0.5mm Board To Board Plug 2.40mm Height	
GENERAL TOLERANCE	UNITS	mm	KLS P/N:
x.x ±0.30	SHEET SIZE	A4	L-KLS1-B0105-240MXX-T3R
x.xx ±0.20	Draw:	Daniel	2020-11-11
x.xxx ±0.10	Check:	Daniel	2020-11-11

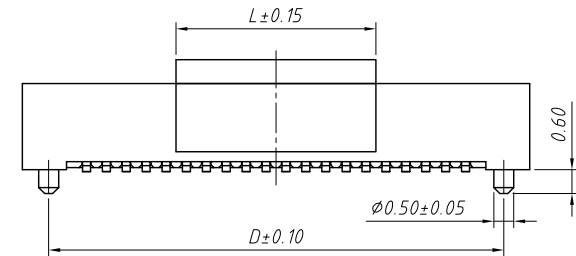


NingBo KLS ELECTRONIC CO.,L TD.

RoHS Compliance



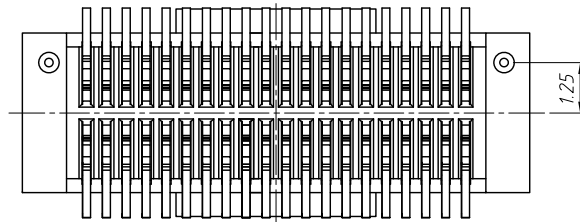
Mated Drawing (REF)



Mating Height Dimension

P/N Plug	P/N Socket	Mating Height
B0105-240M	B0105-220F	3.00
B0105-290M		3.50

Circuit	A	B	C	D
10	5.20	2.00	2.96	3.90
12	5.70	2.50	3.46	4.40
14	6.20	3.00	3.96	4.90
16	6.70	3.50	4.46	5.40
18	7.20	4.00	4.96	5.90
20	7.70	4.50	5.46	6.40
22	8.20	5.00	5.96	6.90
24	8.70	5.50	6.46	7.40
26	9.20	6.00	6.96	7.90
28	9.70	6.50	7.46	8.40
30	10.20	7.00	7.96	8.90
32	10.70	7.50	8.46	9.40
34	11.20	8.00	8.96	9.90
36	11.70	8.50	9.46	10.40
38	12.20	9.00	9.96	10.90
40	12.70	9.50	10.46	11.40
42	13.20	10.00	10.96	11.90
44	13.70	10.50	11.46	12.40
46	14.20	11.00	11.96	12.90
48	14.70	11.50	12.46	13.40
50	15.20	12.00	12.96	13.90
60	17.70	14.50	15.46	16.40
70	20.20	17.00	17.96	18.90
80	22.70	19.50	20.46	21.40
90	25.20	22.00	22.96	23.90
100	27.70	24.50	25.46	26.40
120	32.70	29.50	30.46	31.40



Material and Plated

- 1.Housing:High Temp Plastic,(LCP UL94 V-0)
- 2.Contact: Phosphor Bronze
- 3.Plated:Gold Plated
- 4.Package:1400pcs/Reel

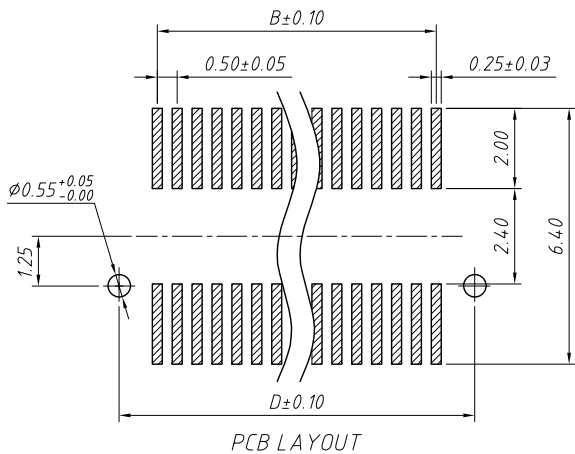
Order Information:

L-KLS1-B0105-220FXX-T3R

- L: RoHS
- Board To Board
- Pitch-0.50mm
- Height-2.20mm
- Type:F-Female
- XX-No. Of Contact
- Installation mode:
- T=SMD Without Post, T3=SMD With Post
- Packing:R=Reel T=Tube

Specifications:

- 1.Current Rating:0.5A AC/DC
- 2.Voltage Rating:50V AC/DC
- 3.Contact Resistance:30mΩ, max.
- 4.Insulation Resistance:100MΩ, min.
- 5.Withstanding Voltage:100V AC for one minute
- 6.Operating Temperature Range:-20°C to + 105°C



Dim L	Applicable Number
5.00	(10 to 48) Pin
12.0	(50 to 120) Pin

ANGLE TOLERANCE	PROJECTION	Description:
±3°		Pitch 0.5mm Board to Board Connector H3.00~6.50mm
GENERAL TOLERANCE	UNITS	mm
x.x ±0.30	SHEET SIZE	A4
x.xx ±0.20	Draw:	Daniel 2020-11-11
x.xxx ±0.10	Check:	Daniel 2020-11-11



NingBo KLS ELECTRONIC CO.,L TD.