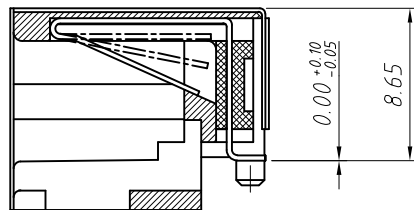
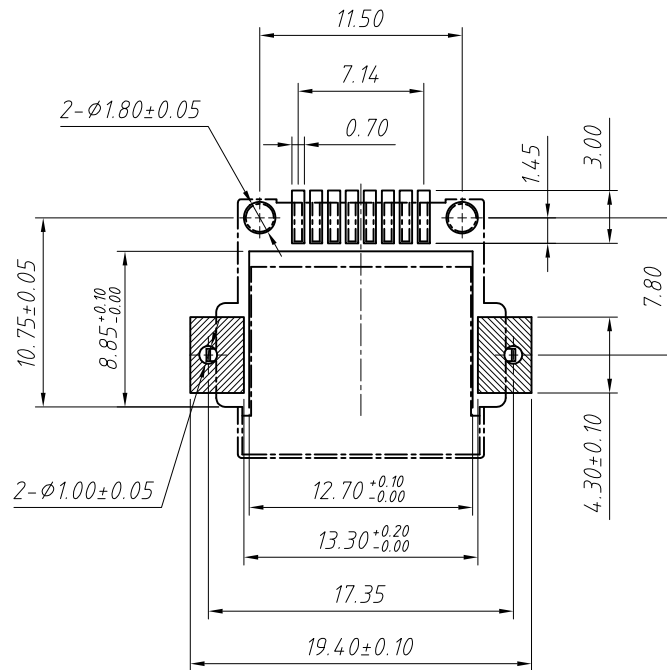
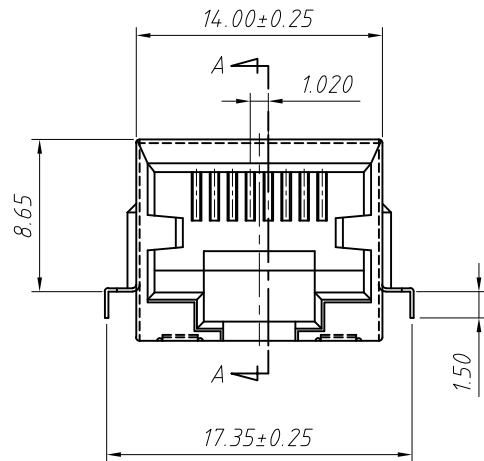
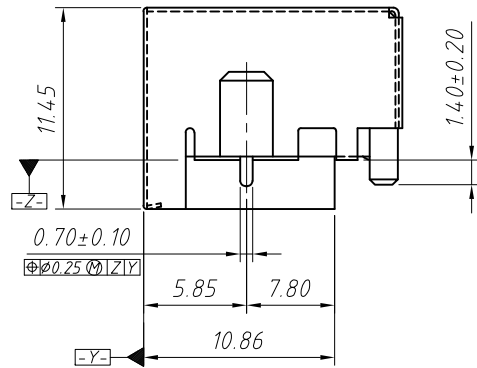
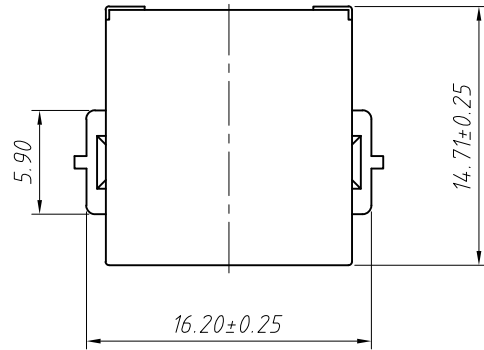


RoHS Compliance



SEE "A"

Electrical:

- 1.Voltage Rating:125VAC
- 2.Current Rating:1.5A
- 3.Contact Resistance:40m Ω Max.
- 4.Insulation Resistance:1000M Ω Min.@500VDC
- 5.Withstanding Resistance:1000VAC RMS.50Hz 1minute

Materials:

- 1.Housing:High Temp. Thermoplastic Flammability,UL 94 V-0
- 2.Contact:Phosphor Bronze
- 3.Plating:Gold Plating over nickel in contact, Tin Plating over nickel in solder area
- 4.Shield: 0.23 Thickness Brass With Nickel Plated

Mechanical:

- 1.Durability:750 cycles Min.

Environmental:

1. Storage:-40°C ~ +85°C
2. Operation:-20°C ~ +75°C

Order Information:

L-KLS12-SMT32-8P8C-W-XX-P

- L: RoHS
- SMT series
- Point No:8P8C
- Shield Code:W-With Shield
- Plating:
- 01: Fu" Gold 02: 3u" Gold
- 03: 6u" Gold 04: 15u" Gold
- 05: 30u" Gold
- Packing:R-Reel P-Blister Tray

ANGLE TOLERANCE	PROJECTION	Description:	RJ45-8P8C SMD Jack Horizontal, Mid Mount with Shielded
$\pm 3^\circ$			
GENERAL TOLERANCE	UNITS	mm	KLS P/N: L-KLS12-SMT32-8P8C-W-XX-P
x.x ± 0.30	SHEET SIZE	A4	NingBo KLS ELECTRONIC CO.,L TD.
x.xx ± 0.20	Draw:Jenny	Daniel	
x.xxx ± 0.10	Check:Daniel	Daniel	