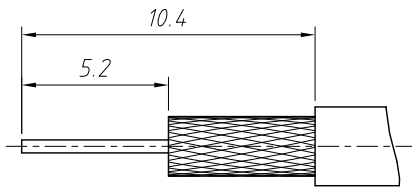
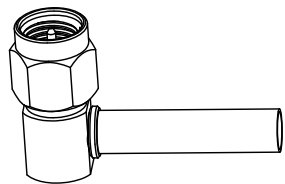
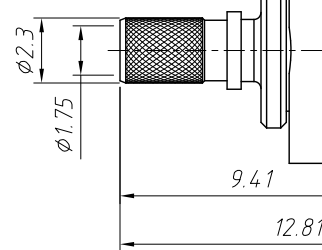
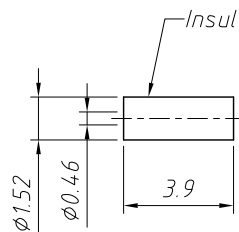
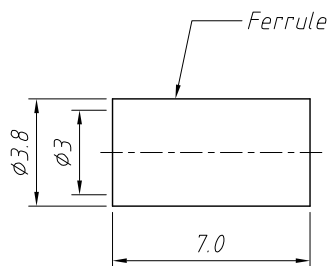
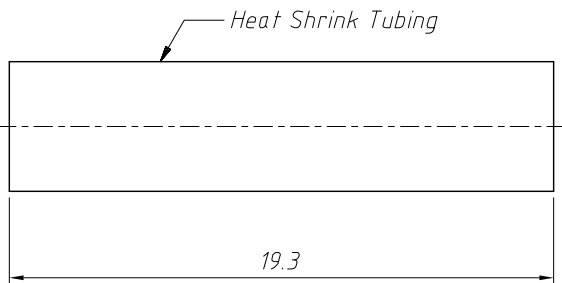
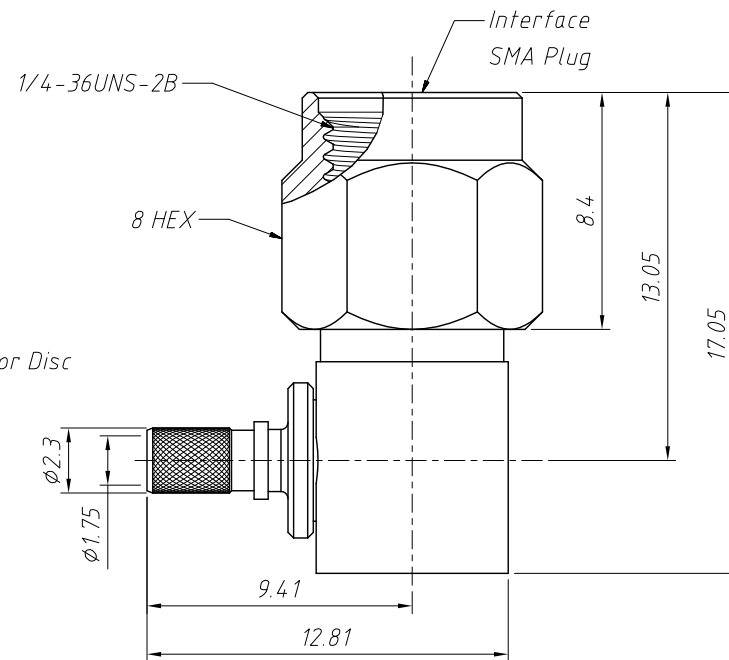


1
RoHS Compliance



Recommended Cable Stripping Dims



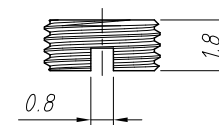
Electrical:
 Impedance: 50Ω
 Frequency Range: DC-12.4 GHz
 VSWR: 1.10 (-26dB) Max, DC-6 GHz
 1.13 (-24dB) Max, 6-12 GHz
 Dielectric Withstanding Voltage: 500 VRMS . Min

Mechanical:
 Durability: 500 Cycles Min.
 Temperature Range: -65°C to +165°C

Material:
 Ferrule: Copper, Nickel Plating
 Body: Brass, Nickel Plating
 Contact: Brass, Gold Plating
 Retainer Ring: SUS 304 , Natural
 Gasket: Silicon Rubber, Red
 Insulator: PTFE, Natural
 Insulator Disc: Ultem 1000, Natural

- Instructions:**
- 1.Contact Pin To SOLDER
 - 2.Hand Tighten Cap After Soldering
 - 3.Crimp Ferrule With HEX

- Packing:**
- Quantity: Single Pack
 - Marking: Bag To Be Marked



ANGLE TOLERANCE	PROJECTION	Description:	SMA Cable Connector Right Angle (Plug, Male, 50Ω)	
±3°				
GENERAL TOLERANCE	UNITS	mm	KLS P/N:	L-KLS1-SMA093
x.x ±0.30	SHEET SIZE	A4		
x.xx ±0.20	Draw:	Daniel	2020-11-11	NingBo KLS ELECTRONIC CO.,L TD.
x.xxx ±0.10	Check:	Daniel	2020-11-11	