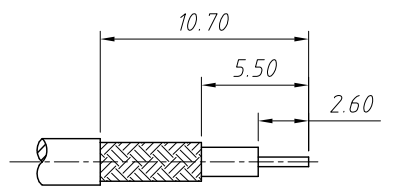
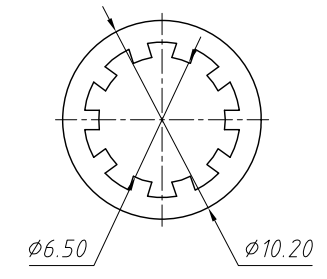
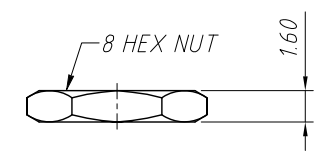
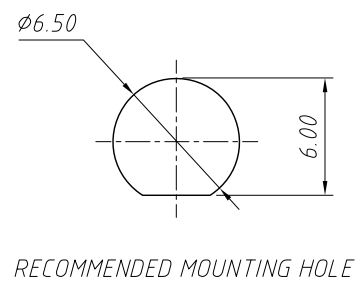
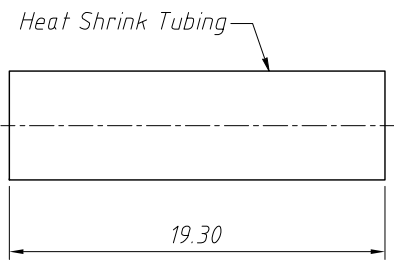
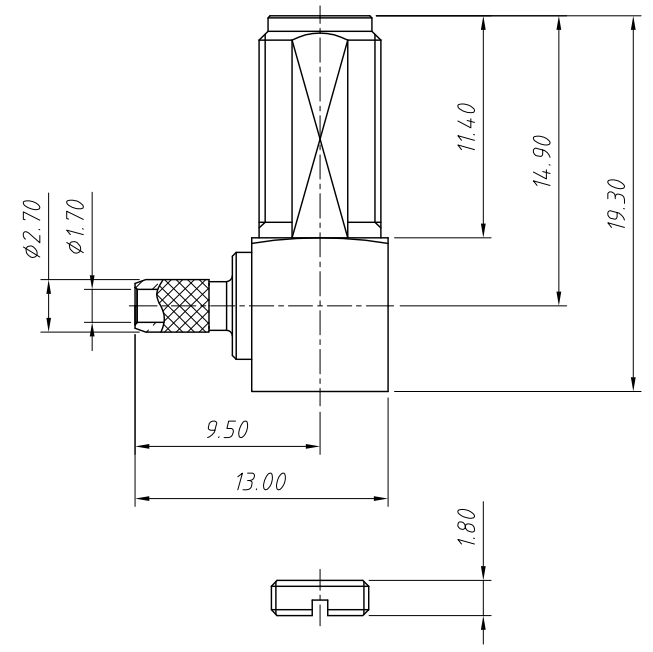
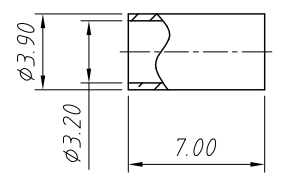


1
RoHS Compliance

A
B
C
D
E
F
G
H



RECOMMENDED CABLE STRIPPING DIMS



Material:
 Body/Barrel: Brass, Gold Plating
 Insulator: Ptfе, Natural
 Contact: Brass, Gold Plating
 Lock Washer: Brass, Gold Plating
 HEX Nut: Brass, Gold Plating
 Cover: Brass, Gold Plating
 Ferrule: Brass, Gold Plating

Electrical:
 Impedance: 50 Ω
Mechanical:
 Durability: 500 Cycles Min.
 Temperature Range: -65°C to +165°C
 Crimped Ferrule HEX Crimp
 Contact Pin TO Solder
 Max. Panel Thickness=3.2mm

ANGLE TOLERANCE	PROJECTION	Description:	Panel Mount SMA Cable Connector Right Angle (Jack, Female, 50 Ω)
$\pm 3^\circ$			
GENERAL TOLERANCE	UNITS	mm	KLS P/N: L-KLS1-SMA121
x.x ± 0.30	SHEET SIZE	A4	 NingBo KLS ELECTRONIC CO.,L TD.
x.xx ± 0.20	Draw:	Daniel 2020-11-11	
x.xxx ± 0.10	Check:	Daniel 2020-11-11	

1 2 3 4 5 6 7 8