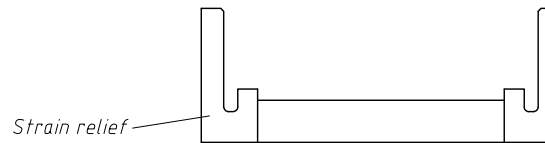
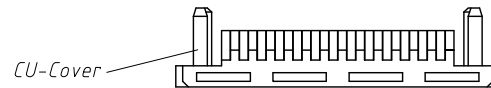
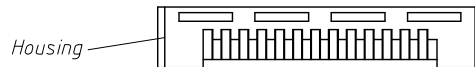
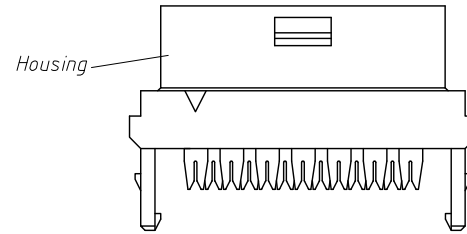
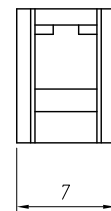
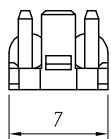
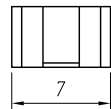
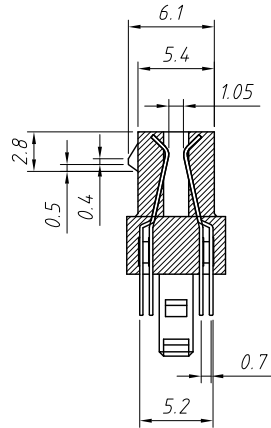
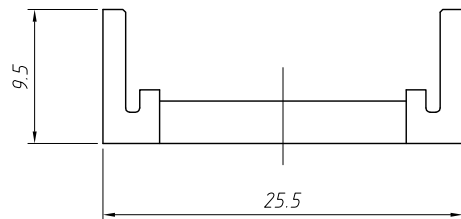
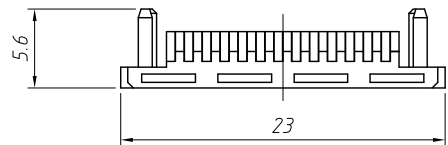
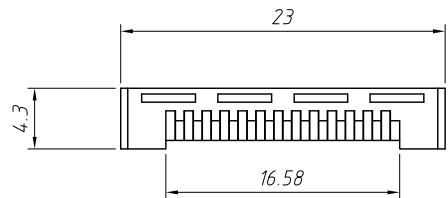
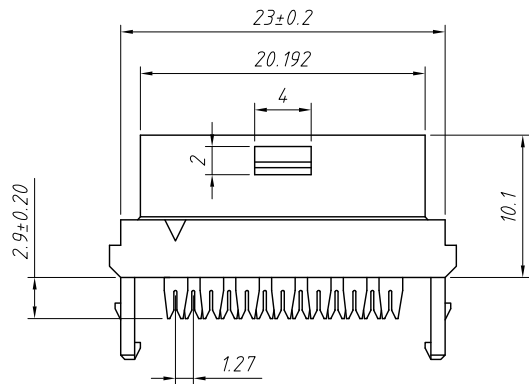
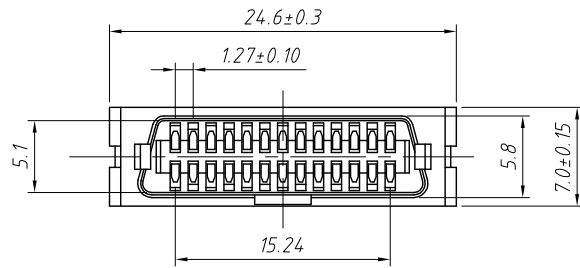


RoHS Compliance



SCSI Four Type Assemble

Electrical:

1. Rated Current: 1.0 AMP
2. Contact Resistance: 35mΩ Max
3. Withstand Voltage: 500V AC / DC
4. Insulation Resistance: 500MΩ Min
5. Wire Accommodation: 28AWG

Materials:

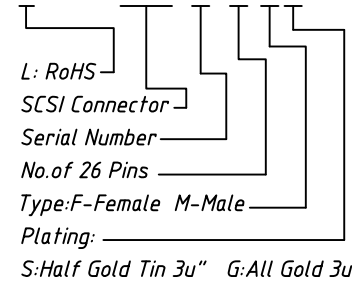
1. Insulator: PBT, UL94 V-0, Black
2. Contact: Phosphor Bronze
3. Contact Area Plated: Au or Sn Over Ni

Environmental:

1. Operation Temperature: -40°C ~ 105°C

Order Information:

L-KLS1-SCSI-08-26 F S



ANGLE TOLERANCE	PROJECTION	Description:	SCSI Connector CN Type Female IDC	
±3°				
GENERAL TOLERANCE	UNITS	mm	KLS P/N:	L-KLS1-SCSI-08-26FS
x.x ±0.30	SHEET SIZE	A4		
x.xx ±0.20	Draw:	Daniel	2021-10-11	
x.xxx ±0.10	Check:	Daniel	2021-10-11	

NingBo KLS ELECTRONIC CO.,L TD.