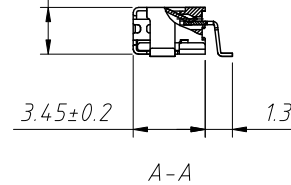
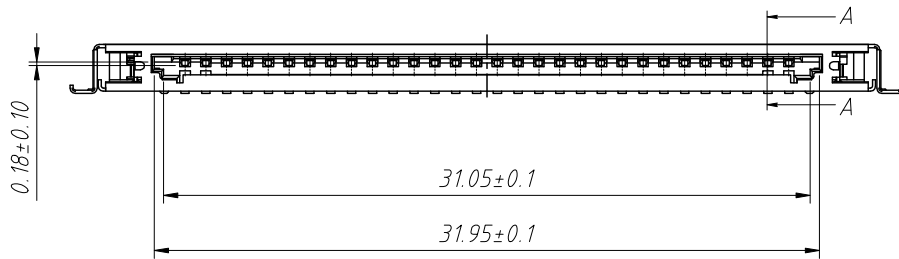
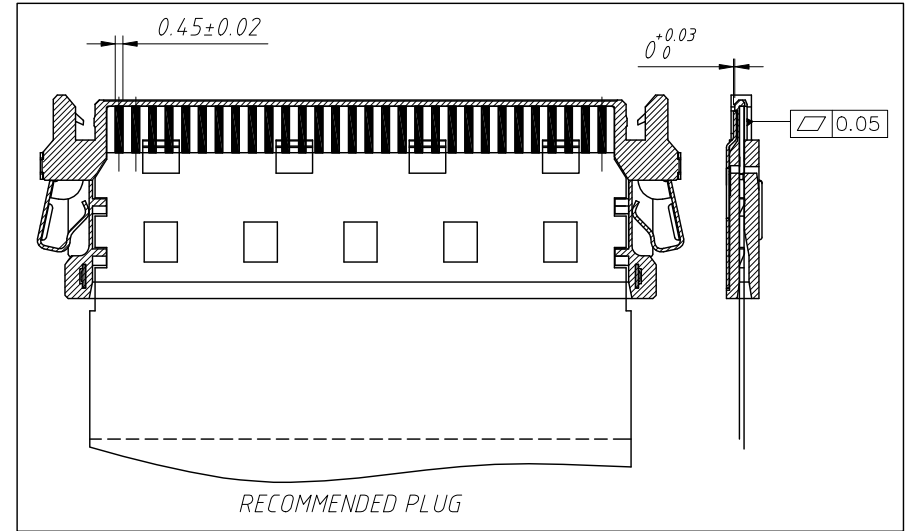
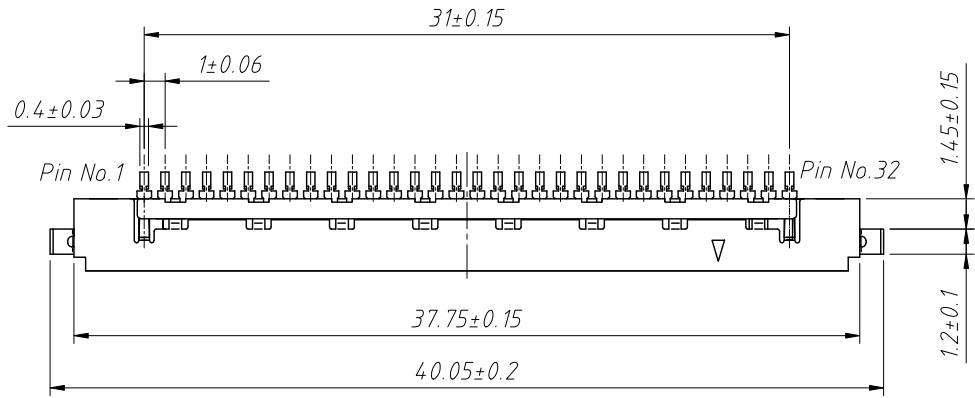


RoHS Compliance



Material:
 Housing: Height Thermoplastic, UL 94 V-0
 Color: Black color
 Contact : Copper Alloy, T=0.15mm
 Shell : Stainless Steel, T=0.15mm

Order Information:

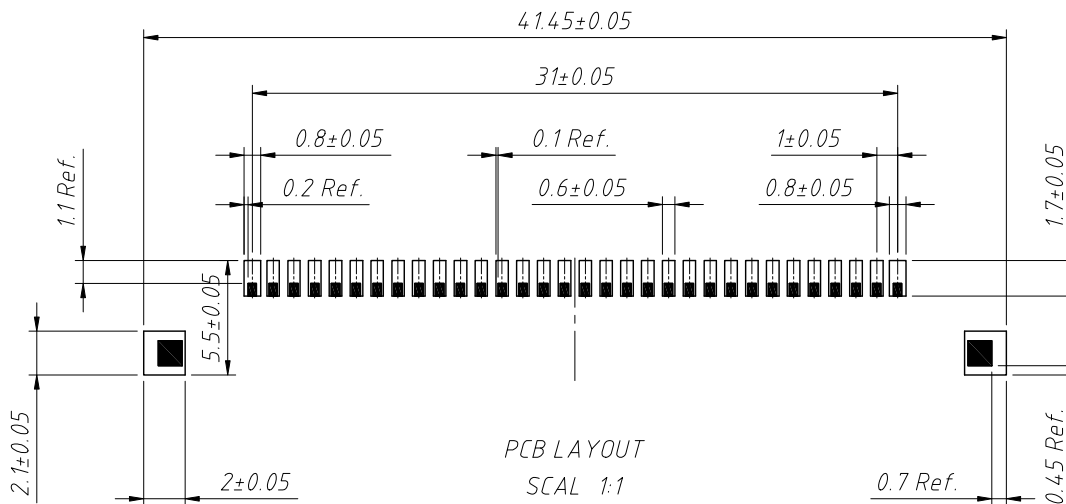
L-KLS1-320-2.25-32-T-U-R

- L: RoHS
- Height: 2.25mm
- No. of 30+2 pins
- Type: T-SMT Pin
- U-Upper Contact
- Packing: R-Reel

Finish:

Contact : 1u"-3u" Gold Plating On Contact Area
 Matte Tin 75u" Min Overall 50u" Nickel Under Plated (Lead Free)
 Shell : 50u" Min Matte Tin Overall 50u" Min Nickel Under Plated (Lead Free)

Coplanarity Between Terminal And Hold Down Of Shell Should BE 0.08mm MAX



ANGLE TOLERANCE	PROJECTION	Description:
±3°		L VDS REC. 30P+2P CONNECTOR ON TYPE
GENERAL TOLERANCE	UNITS	mm
x.x ±0.30	SHEET SIZE	A4
x.xx ±0.20	Draw:	Daniel 2020-11-11
x.xxx ±0.10	Check:	Daniel 2020-11-11



NingBo KLS ELECTRONIC CO.,LTD.