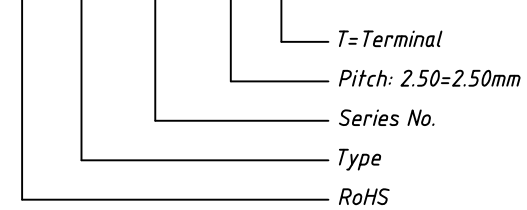


**Order Information**

**L-KLS1-XL2-2.50-T**

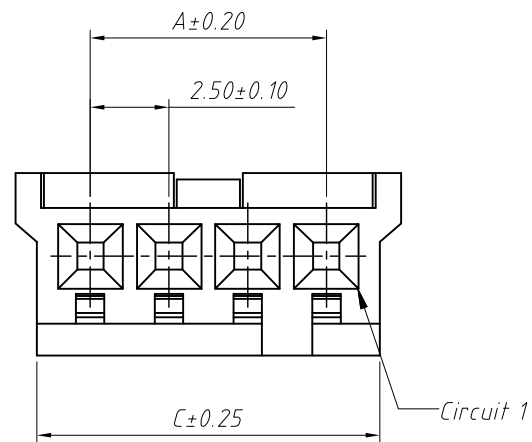


**Ordering Information & Specifications**

Part No.	Wire Range	Insulation O.D.	Material	Finish	Qty/reel
2.50-T	AWG#20-#26	1.90mm(max)	Brass	Tin-plated	10000pcs

Note:E-Stamping before Tin-plated

GENERAL TOLERANCE	PROJECTION		Description:
X. ±0.50	UNITS	mm	2.50mm 171822 Type Wire To Board Connector
.X ±0.25	SCALE	1:1	
.XX ±0.10	Draw by:	Jenny	
ANGLE TOLERANCE	Check by:		KLS P/N: L-KLS1-XL2-2.50
X. ±5°	Date	2018-03-01	NingBo KLS ELECTRONIC CO.,L TD.
.X ±3°	SHEET	1 OF 1	
.XX ±2°			



Ordering Information & Dimensions

Part No.	Dimensions		
	A	B	C
02	2.50	7.25	5.90
03	5.00	9.75	8.40
04	7.50	12.25	10.90
05	10.00	14.75	13.40
06	12.50	17.25	15.90
07	15.00	19.75	18.40
08	17.50	22.25	20.90
09	20.00	24.75	23.40
10	22.50	27.25	25.90
11	25.00	29.75	28.40
12	27.50	32.25	30.90
13	30.00	34.75	33.40
14	32.50	37.25	35.90
15	35.00	39.75	38.40

Material:

Housing: Nylon 66, UL 94 V-0

COLOR: Natural (White)

Electrical Characteristics:

Poles: 2 to 15P

Voltage rating: 250V

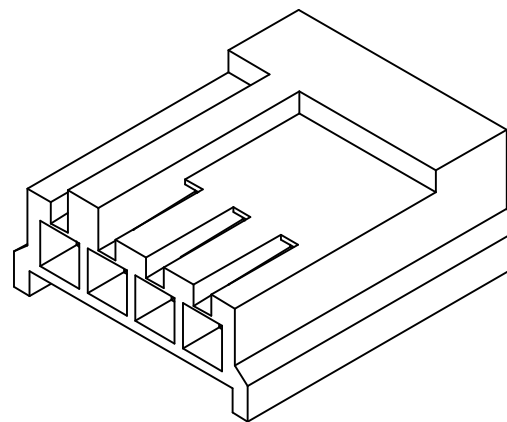
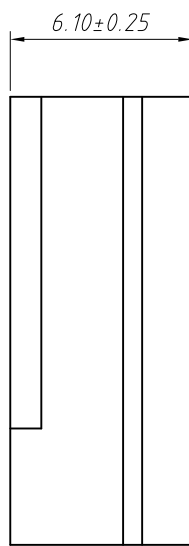
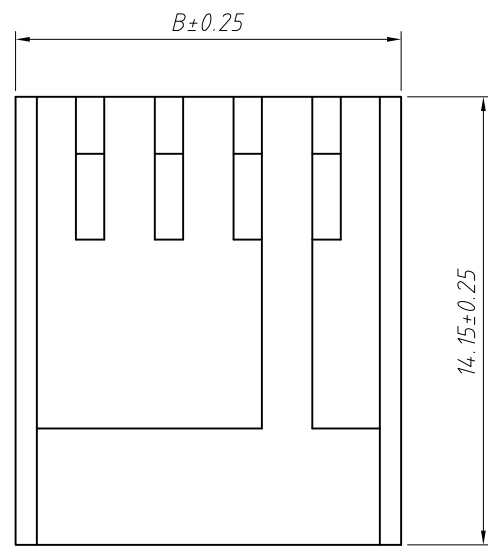
Current rating: 3.0A

Insulation resistance: 500MΩ Min.

Contact resistance: 10mΩ/Max.

Withstand voltage: 800V AC/minute

Working Temperature: -25°C to +85°C



Order Information

L-KLS1-XL2-2.50-XX-H

H=Hosing

PIN Number: 02~15Pin

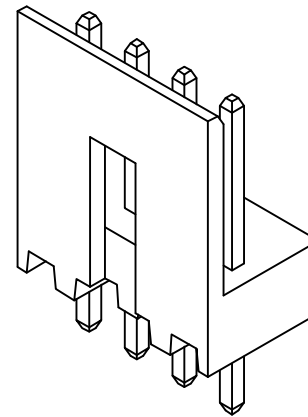
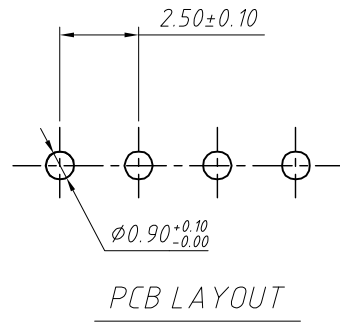
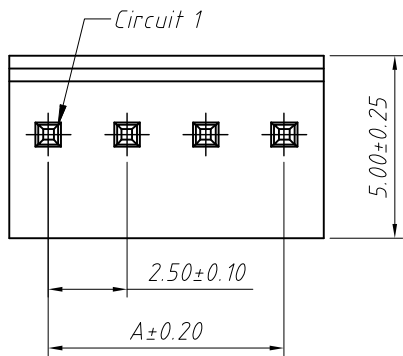
Pitch: 2.50=2.50mm

Series No.

Type

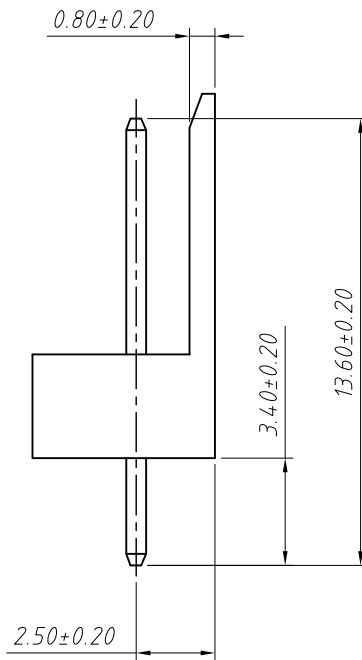
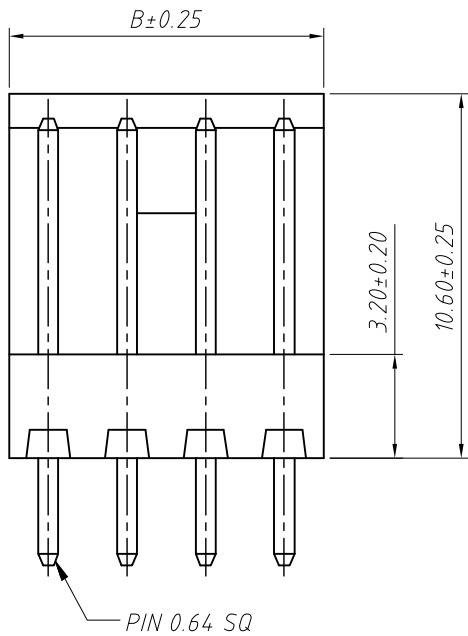
RoHS

GENERAL TOLERANCE	PROJECTION		Description:
X. ±0.50	UNITS	mm	2.50mm 171822 Type Wire To Board Connector
.X ±0.25	SCALE	1:1	
.XX ±0.10	Draw by:	Jenny	
ANGLE TOLERANCE	Check by:		KLS P/N: L-KLS1-XL2-2.50
X. ±5°	Date	2018-03-01	NingBo KLS ELECTRONIC CO.,L TD.
.X ±3°	SHEET	1 OF 1	
.XX ±2°			



**Material:**  
Housing: Nylon 66, UL 94V-0, White  
Contacts: Brass, Tin-plated

**Electrical Characteristics:**  
Poles: 2 to 15P  
Voltage rating: 250V  
Current rating: 3.0A  
Insulation resistance: 500M $\Omega$  Min.  
Contact resistance: 10m $\Omega$ /Max.  
Withstand voltage: 800V AC/minute  
Working Temperature: -25°C to +85°C

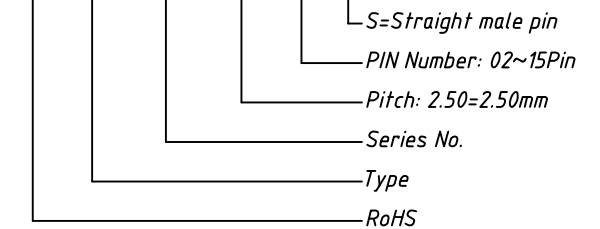


Ordering Information & Dimensions

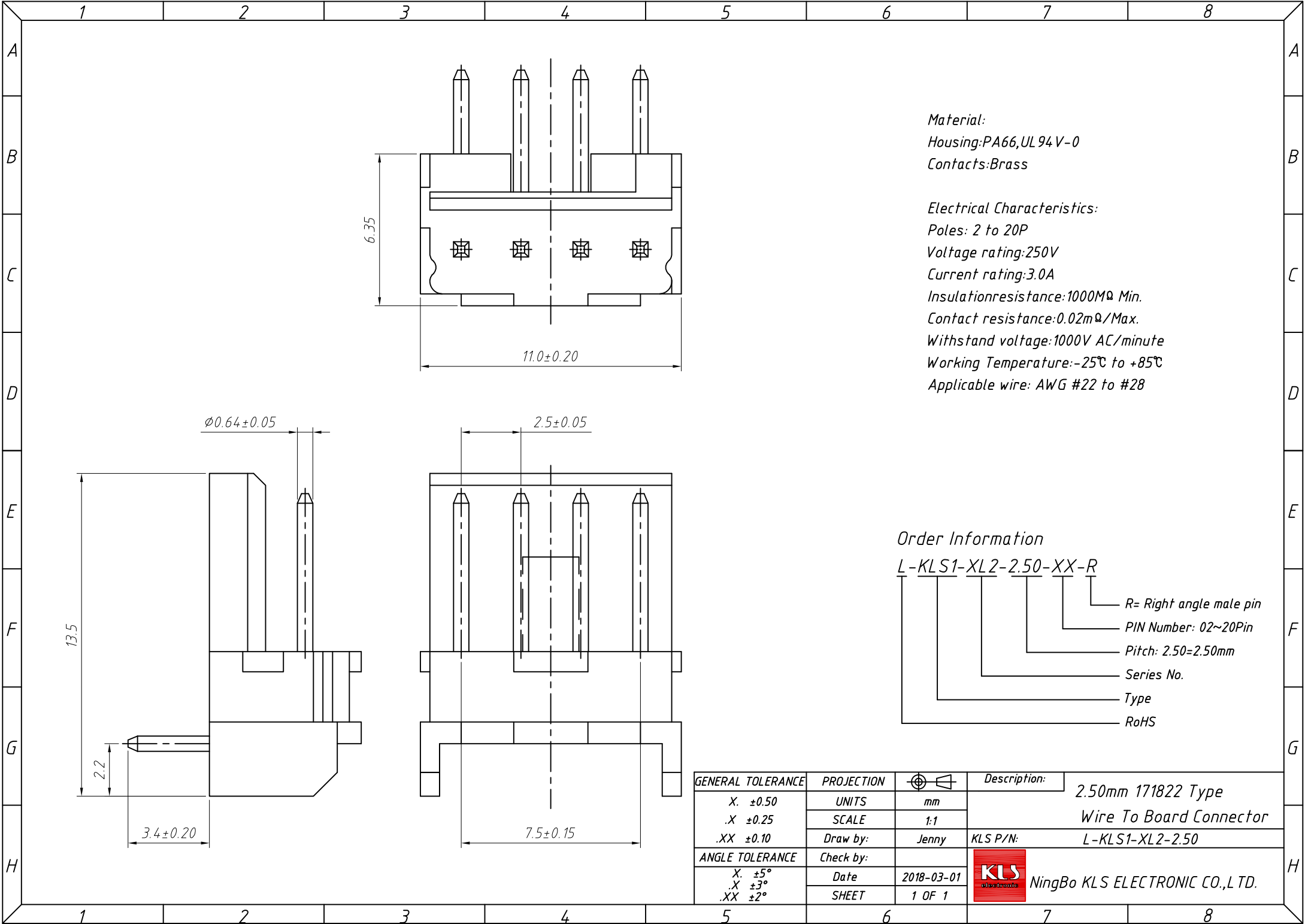
Part No.	Dimensions	
	A	B
02	2.50	5.00
03	5.00	7.50
04	7.50	10.00
05	10.00	12.50
06	12.50	15.00
07	15.00	17.50
08	17.50	20.00
09	20.00	22.50
10	22.50	25.00
11	25.00	27.50
12	27.50	30.00
13	30.00	32.50
14	32.50	35.00
15	35.00	37.50

Order Information

L-KLS1-XL2-2.50-XX-S



GENERAL TOLERANCE	PROJECTION		Description:
X. ±0.50	UNITS	mm	2.50mm 171822 Type Wire To Board Connector
.X ±0.25	SCALE	1:1	
.XX ±0.10	Draw by:	Jenny	KLS P/N: L-KLS1-XL2-2.50
ANGLE TOLERANCE	Check by:		NingBo KLS ELECTRONIC CO.,L TD.
X. ±5°	Date	2018-03-01	
.X ±3°	SHEET	1 OF 1	
.XX ±2°			



Material:  
Housing: PA66, UL 94 V-0  
Contacts: Brass

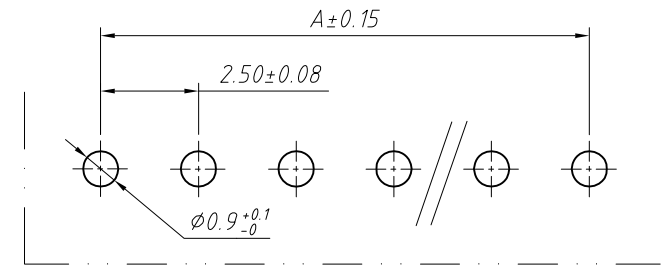
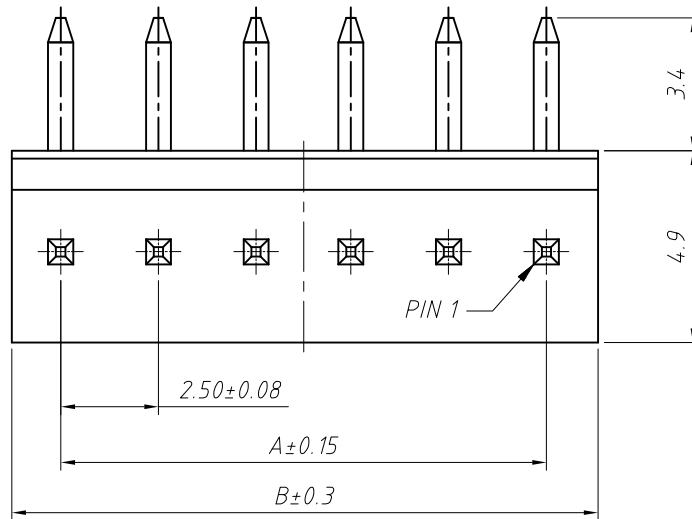
Electrical Characteristics:  
Poles: 2 to 20P  
Voltage rating: 250V  
Current rating: 3.0A  
Insulation resistance: 1000M $\Omega$  Min.  
Contact resistance: 0.02m $\Omega$ /Max.  
Withstand voltage: 1000V AC/minute  
Working Temperature: -25 $^{\circ}$ C to +85 $^{\circ}$ C  
Applicable wire: AWG #22 to #28

Order Information  
L-KLS1-XL2-2.50-XX-R

- R= Right angle male pin
- PIN Number: 02~20Pin
- Pitch: 2.50=2.50mm
- Series No.
- Type
- RoHS

GENERAL TOLERANCE	PROJECTION		Description:
X. $\pm 0.50$	UNITS	mm	2.50mm 171822 Type Wire To Board Connector
.X $\pm 0.25$	SCALE	1:1	
.XX $\pm 0.10$	Draw by:	Jenny	
ANGLE TOLERANCE	Check by:		KLS P/N: L-KLS1-XL2-2.50
X. $\pm 5^{\circ}$	Date	2018-03-01	NingBo KLS ELECTRONIC CO.,L TD.
.X $\pm 3^{\circ}$	SHEET	1 OF 1	
.XX $\pm 2^{\circ}$			

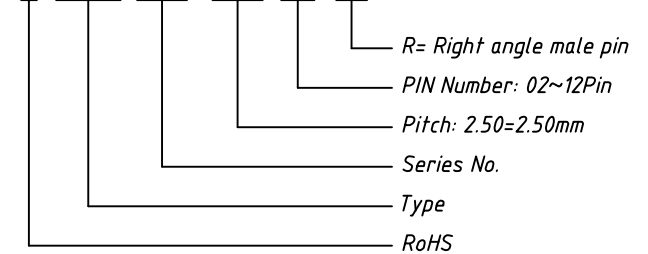
	DIM A	DIM B
02	2.5	5.0
03	5.0	7.5
04	7.5	10.0
05	10.0	12.5
06	12.5	15.0
07	15.0	17.5
08	17.5	20.0
09	20.0	22.5
10	22.5	25.0
11	25.0	27.5
12	27.5	30.0



PCB LAYOUT

Order Information

L-KLS1-XL2-2.50-XX-R1



Material:

Housing: Nylon66, UL 94V-0    Contacts: Brass

Electrical Characteristics:

Poles: 2 to 12P

Voltage rating: 250V    Current rating: 2.0A

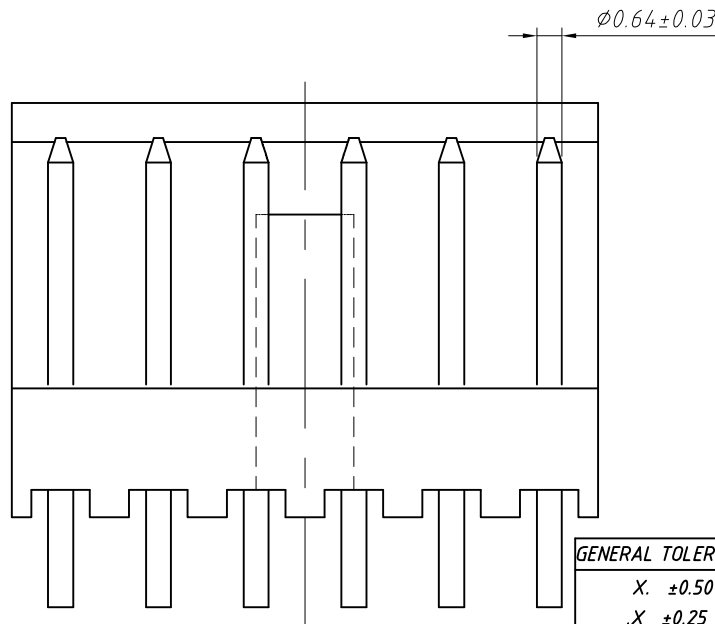
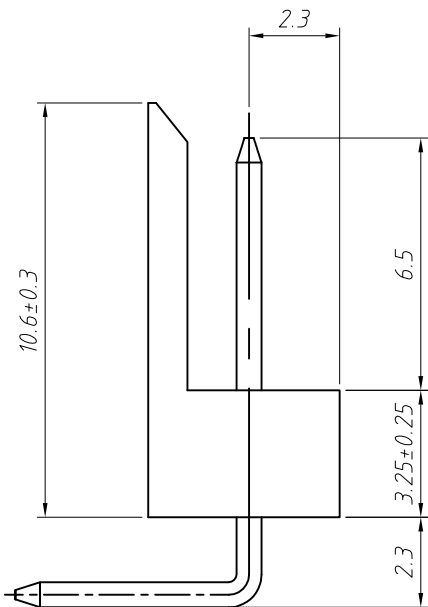
Insulation resistance: 1000MΩ Min.

Contact resistance: 20mΩ/Max.

Withstand voltage: 800V AC/minute

Working Temperature: -25°C to +95°C

Applicable wire: AWG #20 to #26



GENERAL TOLERANCE	PROJECTION		Description:
X. ±0.50	UNITS	mm	2.50mm 171822 Type Wire To Board Connector
.X ±0.25	SCALE	1:1	
.XX ±0.10	Draw by:	Jenny	
ANGLE TOLERANCE	Check by:		KLS P/N: L-KLS1-XL2-2.50
X. ±5°	Date	2018-03-01	NingBo KLS ELECTRONIC CO.,L TD.
.X ±3°	SHEET	1 OF 1	
.XX ±2°			