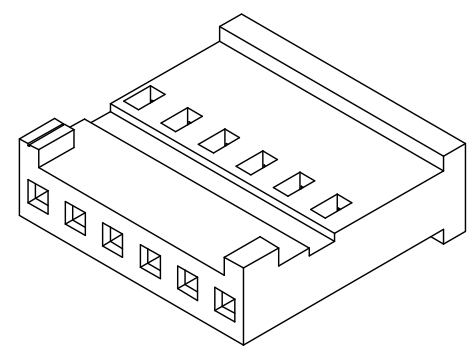
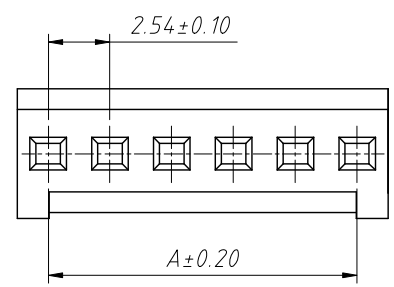
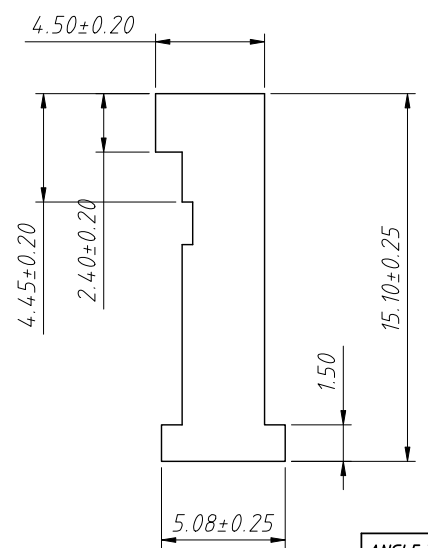
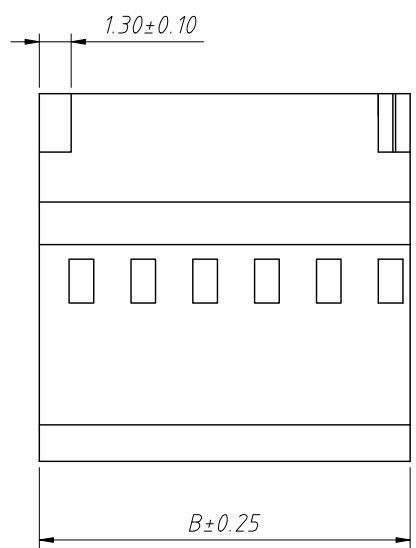


1  
RoHS Compliance



**Material:**  
Housing:PA66,UL 94V-0,Black

**Electrical Characteristics:**  
Rated Current:3.0AMP  
Voltage rating:250V AC,DC  
Temperature range:-45°C ~ + 105°C  
Insulator Resistance:1000MΩ Min  
Withstanding Voltage:1000V AC/minute  
Contact Resistance:20mΩ Max



Pin	Dimensions(mm)	
	A	B
02	2.54	5.08
03	5.08	7.62
04	7.62	10.16
05	10.16	12.70
06	12.70	15.24
07	15.24	17.78
08	17.78	20.32
09	20.32	22.86
10	22.86	25.40
12	27.94	30.48
15	35.56	38.10
18	43.18	45.72

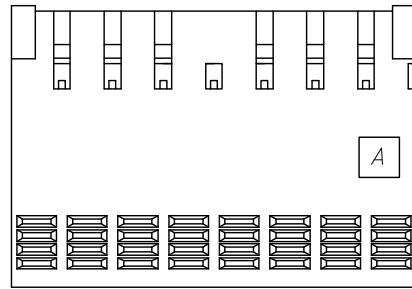
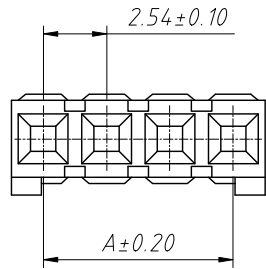
**Order Information:**  
L-KLS1-TE-2.54-1-XX-H

L: RoHS  
Pitch:2.54mm  
Row:  
1-Single layer  
2-Double layer  
XX-No. of 02~18 pins  
Type:  
H / HK-Housing T-Terminal  
S-Straight male pin  
R-Right angle male pin

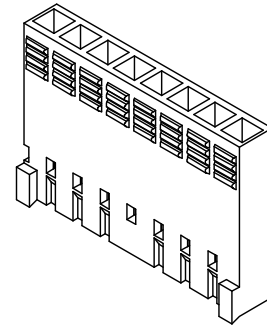
ANGLE TOLERANCE	PROJECTION	Description:	2.54mm Pitch Wire To Board Connector	
±3°				
GENERAL TOLERANCE	UNITS	mm	KLS P/N:	L-KLS1-TE-2.54-1-XX-H
x.x ±0.30	SHEET SIZE	A4		
x.xx ±0.20	Draw:	Daniel	2021-01-11	
x.xxx ±0.10	Check:	Daniel	2021-01-11	

NingBo KLS ELECTRONIC CO.,L.TD.

RoHS Compliance

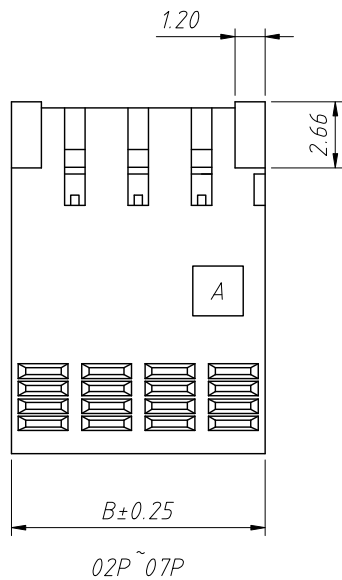


08P~36P

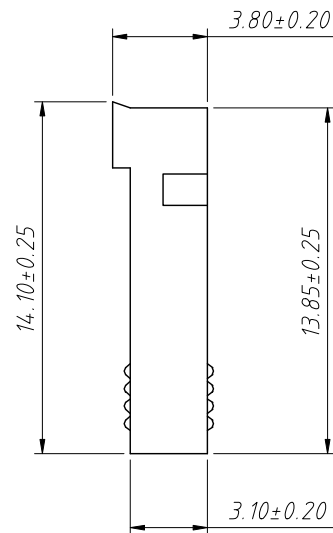


Material:  
Housing:PBT,UL 94 V-0,Blue

Electrical Characteristics:  
Rated Current:3.0AMP  
Voltage rating:250V AC,DC  
Temperature range:-45°C + 105°C  
Insulator Resistance:1000MΩ Min  
Withstanding Voltage:1000V AC/minute  
Contact Resistance:20mΩ Max



02P~07P



Pin	Dimensions(mm)		Pin	Dimensions(mm)	
	A	B		A	B
02	2.54	5.08	19	45.72	48.26
03	5.08	7.62	20	48.26	50.80
04	7.62	10.16	21	50.80	53.34
05	10.16	12.70	22	53.34	55.88
06	12.70	15.24	23	55.88	58.42
07	15.24	17.78	24	58.42	60.96
08	17.78	20.32	25	60.96	63.50
09	20.32	22.86	26	63.50	66.04
10	22.86	25.40	27	66.04	68.58
11	25.40	27.94	28	68.58	71.12
12	27.94	30.48	29	71.12	73.66
13	30.48	33.02	30	73.66	76.20
14	33.02	35.56	31	76.20	78.74
15	35.56	38.10	32	78.74	81.28
16	38.10	40.64	33	81.28	83.82
17	40.64	43.18	34	83.82	86.36
18	43.18	45.72	35	86.36	88.90
			36	88.90	91.44

Order Information:

L-KLS1-TE-2.54-1-XX-HK

L: RoHS

Pitch:2.54mm

Row:

1-Single layer

2-Double layer

XX-No. of 02~36 pins

Type:

H / HK-Housing T-Terminal

S-Straight male pin

R-Right angle male pin

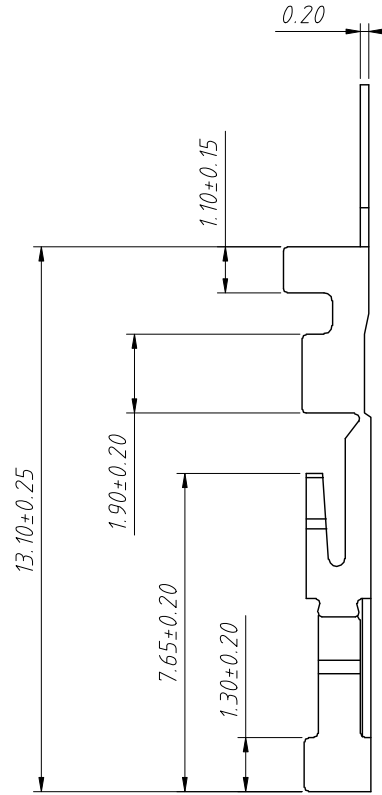
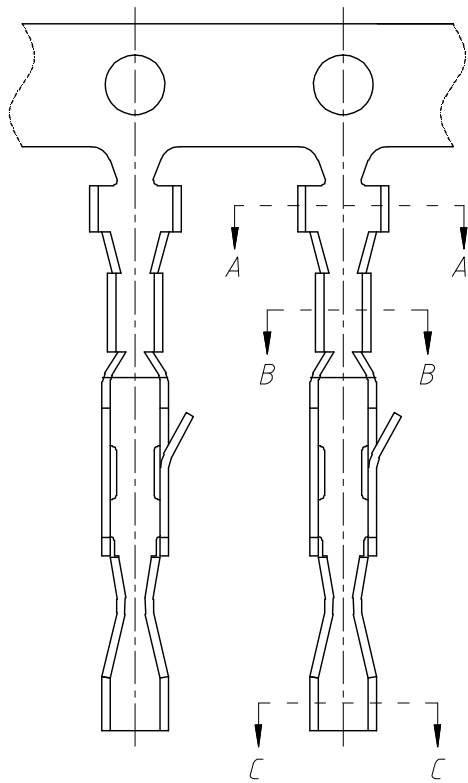
ANGLE TOLERANCE	PROJECTION	Description:
±3°		2.54mm Pitch Wire To Board Connector
GENERAL TOLERANCE	UNITS	mm
x.x ±0.30	SHEET SIZE	A4
x.xx ±0.20	Draw:	Daniel 2021-01-11
x.xxx ±0.10	Check:	Daniel 2021-01-11

L-KLS1-TE-2.54-1-XX-HK



NingBo KLS ELECTRONIC CO.,LTD.

RoHS Compliance



Material:  
Terminal: Phosphor Bronze  
Plating: Gold plated over Nickel  
Applicable wires: AWG #22~#28  
Insulation O.D.: 1.55mm  
Qty/reel: 20000 pcs

Electrical Characteristics:  
Rated Current: 3.0AMP  
Voltage rating: 250V AC, DC  
Temperature range: -45°C ~ +105°C  
Insulator Resistance: 1000MΩ Min  
Withstanding Voltage: 1000V AC/minute  
Contact Resistance: 20mΩ Max

Order Information:

L-KLS1-TE-2.54-T



L: RoHS

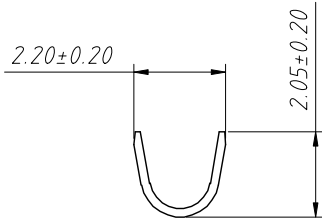
Pitch: 2.54mm

Type:

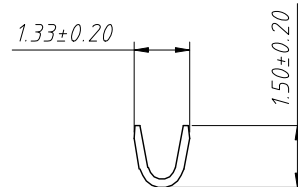
H / HK - Housing T - Terminal

S - Straight male pin

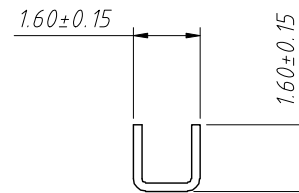
R - Right angle male pin



A-A



B-B

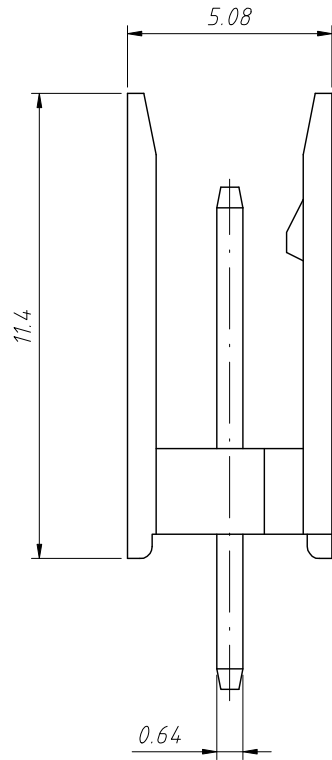
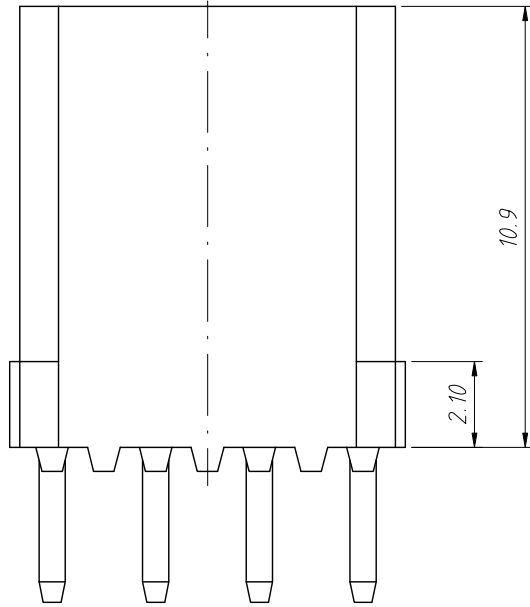


C-C

ANGLE TOLERANCE	PROJECTION	Description:		
±3°		2.54mm Pitch Wire To Board Connector		
GENERAL TOLERANCE	UNITS	mm	KLS P/N:	L-KLS1-TE-2.54-T
x.x ±0.30	SHEET SIZE	A4		
x.xx ±0.20	Draw:	Daniel	2021-01-11	
x.xxx ±0.10	Check:	Daniel	2021-01-11	

**KLS** NingBo KLS ELECTRONIC CO.,LTD.

1 RoHS Compliance



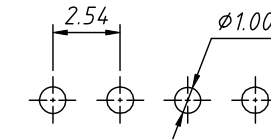
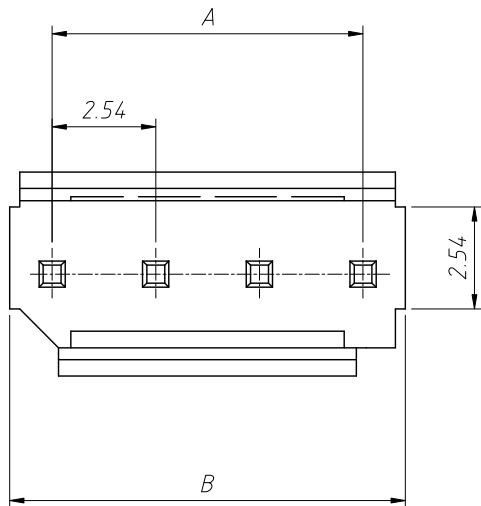
Pin	Dimensions(mm)	
	A	B
02	2.54	5.08
03	5.08	7.62
04	7.62	10.16
05	10.16	12.70
06	12.70	15.24
07	15.24	17.78
08	17.78	22.86
10	22.86	27.94
12	27.94	35.56
15	35.56	40.64
17	40.64	43.18
18	43.18	45.72

Material:  
Housing:PA46,UL 94V-0,Blue  
Pin:Brass,Tin plated

Electrical Characteristics:  
Rated Current:3.0AMP  
Voltage rating:250V AC,DC  
Temperature range:-45°C ~ + 105°C  
Insulator Resistance:1000M $\Omega$  Min  
Withstanding Voltage:1000V AC/minute  
Contact Resistance:20m $\Omega$  Max

Order Information:  
L-KLS1-TE-2.54-1-XX-S

L: RoHS  
Pitch:2.54mm  
Row:  
1-Single layer  
2-Double layer  
XX-No. of 02~18 pins  
Type:  
H / HK-Housing T-Terminal  
S-Straight male pin  
R-Right angle male pin



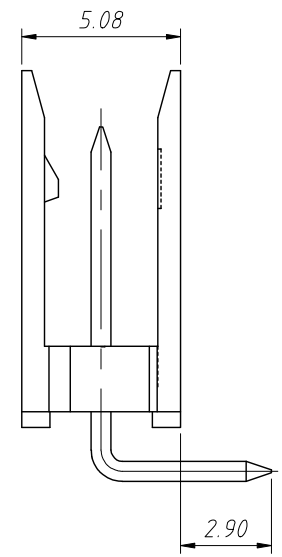
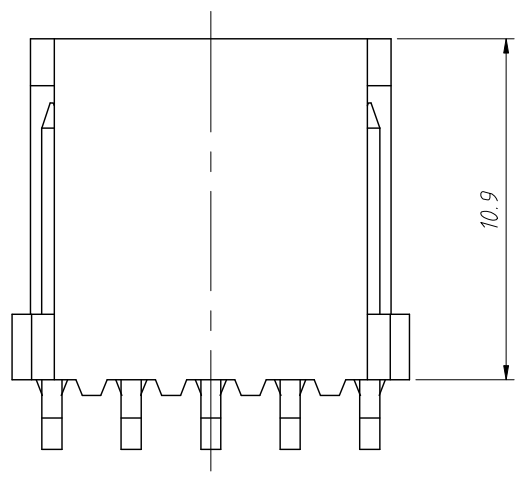
PCB Layout

ANGLE TOLERANCE	PROJECTION	Description:
$\pm 3^\circ$		2.54mm Pitch Wire To Board Connector
GENERAL TOLERANCE	UNITS	mm
x.x $\pm 0.30$	SHEET SIZE	A4
x.xx $\pm 0.20$	Draw:	Daniel 2021-01-11
x.xxx $\pm 0.10$	Check:	Daniel 2021-01-11

L-KLS1-TE-2.54-1-XX-S

NingBo KLS ELECTRONIC CO.,L TD.

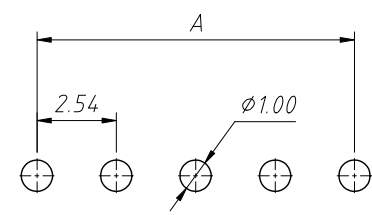
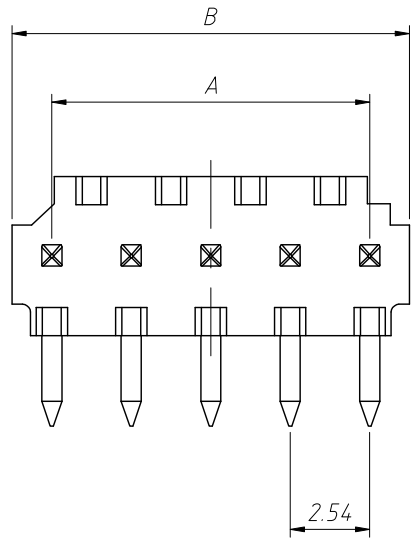
1  
RoHS Compliance



Pin	Dimensions(mm)	
	A	B
02	2.54	5.08
03	5.08	7.62
04	7.62	10.16
05	10.16	12.70
06	12.70	15.24
07	15.24	17.78
08	17.78	22.86
10	22.86	27.94
12	27.94	35.56
15	35.56	40.64
17	40.64	43.18
18	43.18	45.72

**Material:**  
Housing: PA46, UL 94V-0, Blue  
Pin: Brass, Tin plated

**Electrical Characteristics:**  
Rated Current: 3.0AMP  
Voltage rating: 250V AC, DC  
Temperature range: -45°C ~ +105°C  
Insulator Resistance: 1000MΩ Min  
Withstanding Voltage: 1000V AC/minute  
Contact Resistance: 20mΩ Max



PCB Layout

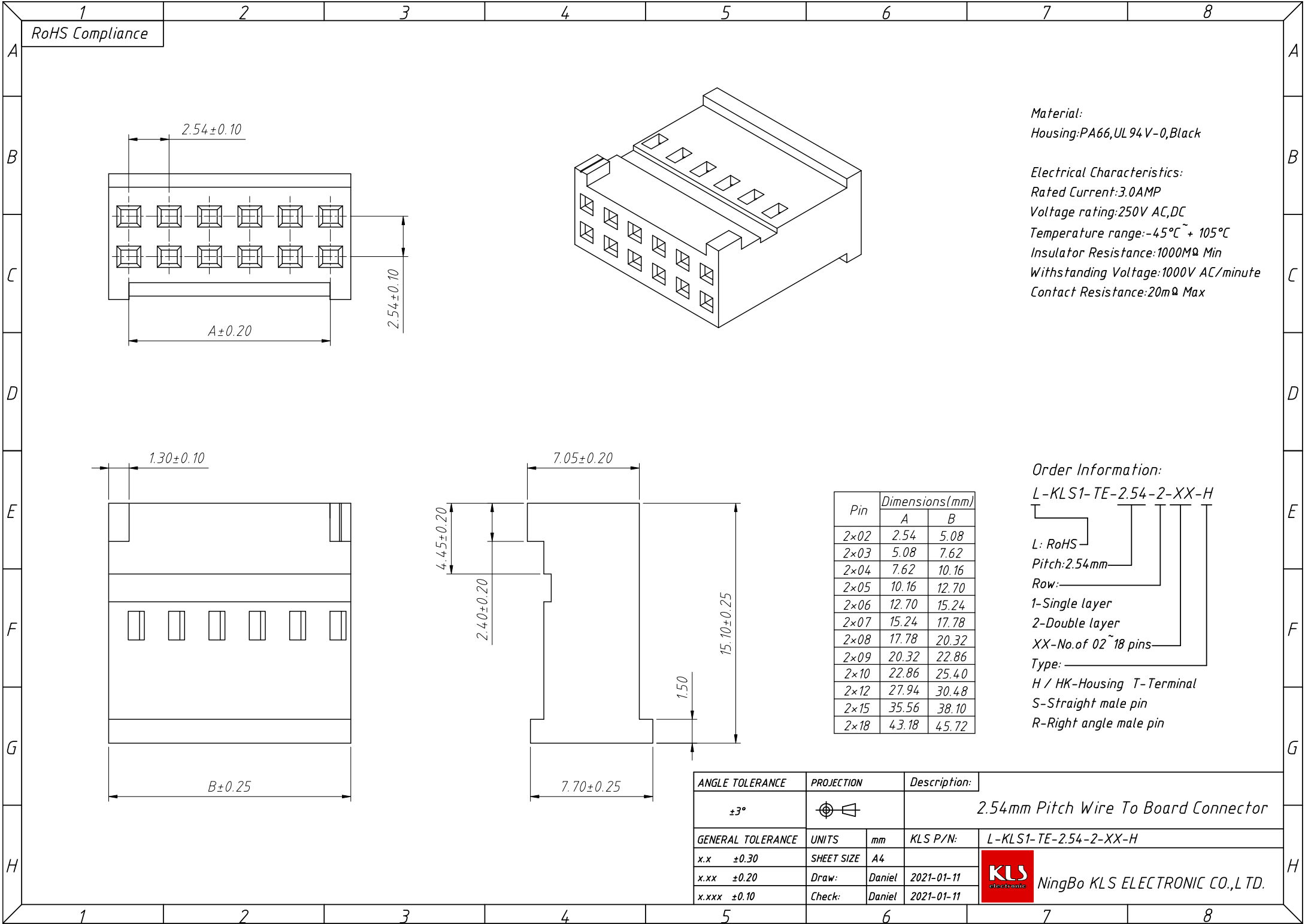
**Order Information:**  
L-KLS1-TE-2.54-1-XX-R

L: RoHS  
Pitch: 2.54mm  
Row:  
1-Single layer  
2-Double layer  
XX-No. of 02~18 pins  
Type:  
H / HK-Housing T-Terminal  
S-Straight male pin  
R-Right angle male pin

ANGLE TOLERANCE	PROJECTION	Description:
±3°		2.54mm Pitch Wire To Board Connector
GENERAL TOLERANCE	UNITS	mm
x.x ±0.30	SHEET SIZE	A4
x.xx ±0.20	Draw:	Daniel 2021-01-11
x.xxx ±0.10	Check:	Daniel 2021-01-11

**KLS** NingBo KLS ELECTRONIC CO.,LTD.

1  
RoHS Compliance



**Material:**  
Housing:PA66,UL 94V-0,Black

**Electrical Characteristics:**  
Rated Current:3.0AMP  
Voltage rating:250V AC,DC  
Temperature range:-45°C ~ + 105°C  
Insulator Resistance:1000MΩ Min  
Withstanding Voltage:1000V AC/minute  
Contact Resistance:20mΩ Max

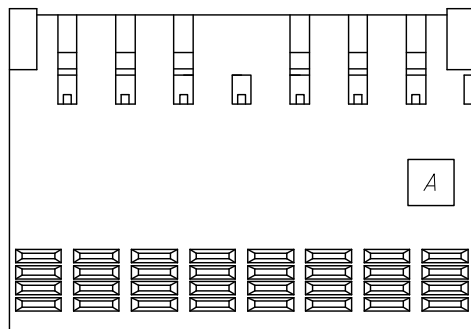
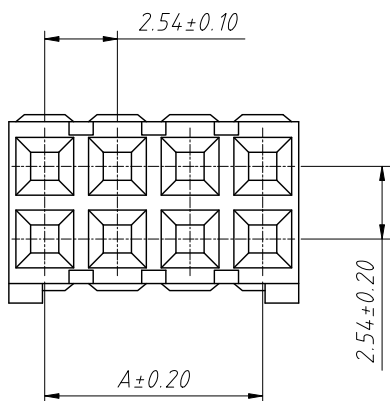
**Order Information:**  
L-KLS1-TE-2.54-2-XX-H

L: RoHS  
Pitch:2.54mm  
Row:  
1-Single layer  
2-Double layer  
XX-No. of 02~18 pins  
Type:  
H / HK-Housing T-Terminal  
S-Straight male pin  
R-Right angle male pin

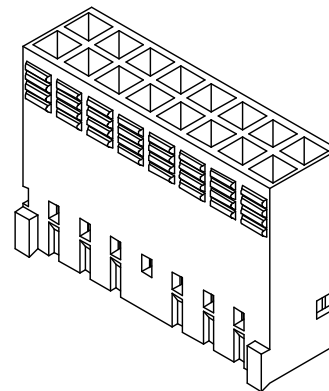
Pin	Dimensions(mm)	
	A	B
2×02	2.54	5.08
2×03	5.08	7.62
2×04	7.62	10.16
2×05	10.16	12.70
2×06	12.70	15.24
2×07	15.24	17.78
2×08	17.78	20.32
2×09	20.32	22.86
2×10	22.86	25.40
2×12	27.94	30.48
2×15	35.56	38.10
2×18	43.18	45.72

ANGLE TOLERANCE	PROJECTION	Description:
±3°		2.54mm Pitch Wire To Board Connector
GENERAL TOLERANCE	UNITS	mm
x.x ±0.30	SHEET SIZE	A4
x.xx ±0.20	Draw:	Daniel 2021-01-11
x.xxx ±0.10	Check:	Daniel 2021-01-11
		KLS ELECTRONIC NingBo KLS ELECTRONIC CO.,L TD.

RoHS Compliance



2×08P~2×36P



Material:

Housing:PBT,UL 94 V-0,Blue

Electrical Characteristics:

Rated Current:3.0AMP

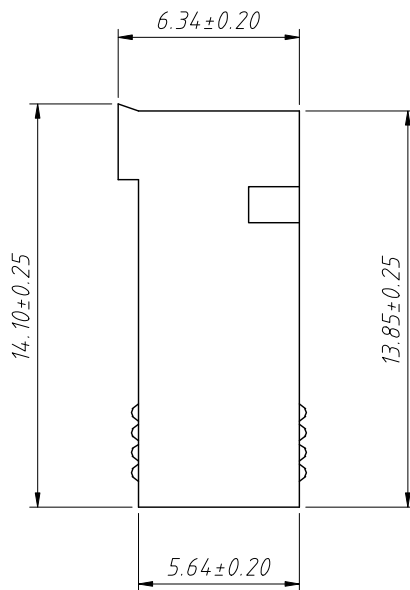
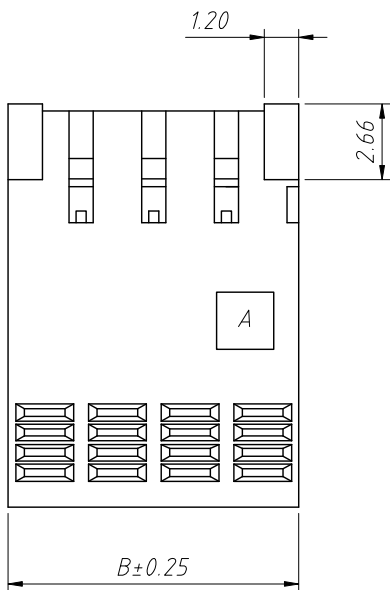
Voltage rating:250V AC,DC

Temperature range:-45°C~+105°C

Insulator Resistance:1000MΩ Min

Withstanding Voltage:1000V AC/minute

Contact Resistance:20mΩ Max



2×02P~2×07P

Pin	Dimensions(mm)		Pin	Dimensions(mm)	
	A	B		A	B
03	5.08	7.62	20	48.26	50.80
04	7.62	10.16	21	50.80	53.34
05	10.16	12.70	22	53.34	55.88
06	12.70	15.24	23	55.88	58.42
07	15.24	17.78	24	58.42	60.96
08	17.78	20.32	25	60.96	63.50
09	20.32	22.86	26	63.50	66.04
10	22.86	25.40	27	66.04	68.58
11	25.40	27.94	28	68.58	71.12
12	27.94	30.48	29	71.12	73.66
13	30.48	33.02	30	73.66	76.20
14	33.02	35.56	31	76.20	78.74
15	35.56	38.10	32	78.74	81.28
16	38.10	40.64	33	81.28	83.82
17	40.64	43.18	34	83.82	86.36
18	43.18	45.72	35	86.36	88.90
19	45.72	48.26	36	88.90	91.44

Order Information:

L-KLS1-TE-2.54-2-XX-HK

L: RoHS

Pitch:2.54mm

Row:

1-Single layer

2-Double layer

XX-No. of 06~72 pins

Type:

H / HK-Housing T-Terminal

S-Straight male pin

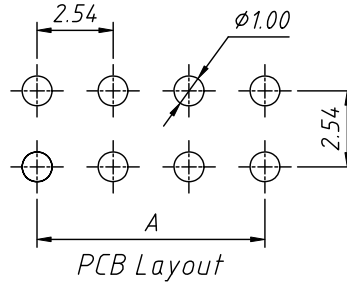
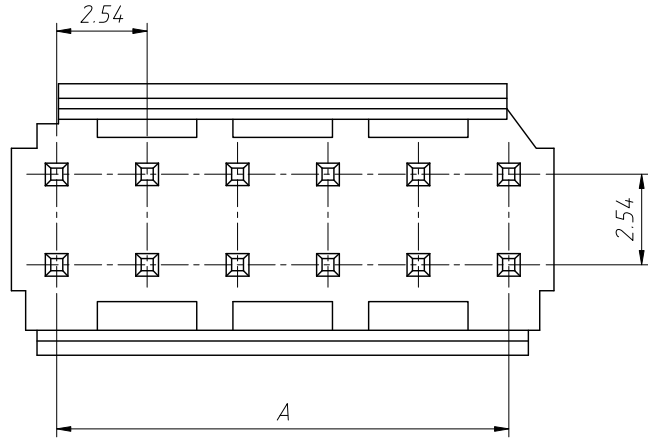
R-Right angle male pin

ANGLE TOLERANCE	PROJECTION	Description:
±3°		2.54mm Pitch Wire To Board Connector
GENERAL TOLERANCE	UNITS	mm
x.x ±0.30	SHEET SIZE	A4
x.xx ±0.20	Draw:	Daniel 2021-01-11
x.xxx ±0.10	Check:	Daniel 2021-01-11



NingBo KLS ELECTRONIC CO.,LTD.

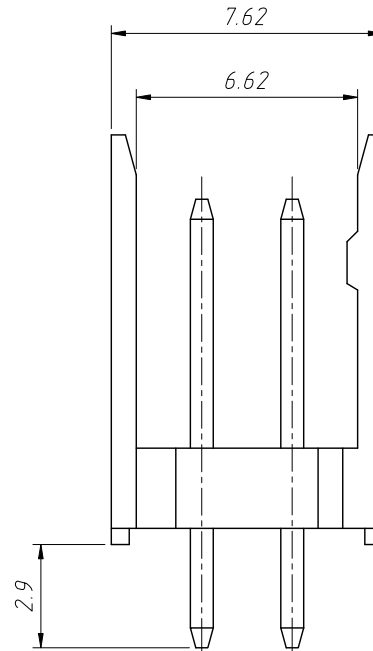
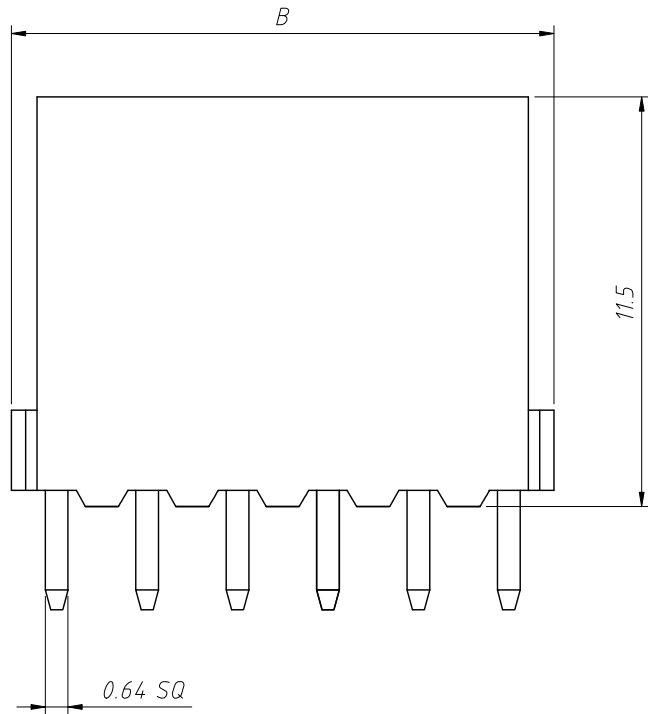
1 RoHS Compliance



Pin	Dimensions(mm)	
	A	B
2x02	2.54	5.08
2x03	5.08	7.62
2x04	7.62	10.16
2x05	10.16	12.70
2x06	12.70	15.24
2x07	15.24	17.78
2x08	17.78	22.86
2x10	22.86	27.94
2x12	27.94	35.56
2x15	35.56	40.64
2x17	40.64	43.18
2x18	43.18	45.72

**Material:**  
Housing: PA46, UL 94V-0, Blue  
Pin: Brass, Tin plated

**Electrical Characteristics:**  
Rated Current: 3.0AMP  
Voltage rating: 250V AC, DC  
Temperature range:  $-45^{\circ}\text{C} \sim +105^{\circ}\text{C}$   
Insulator Resistance: 1000M $\Omega$  Min  
Withstanding Voltage: 1000V AC/minute  
Contact Resistance: 20m $\Omega$  Max



**Order Information:**  
L-KLS1-TE-2.54-2-XX-S

L: RoHS  
Pitch: 2.54mm  
Row:  
1-Single layer  
2-Double layer  
XX-No. of 04 ~ 36 pins  
Type:  
H / HK-Housing T-Terminal  
S-Straight male pin  
R-Right angle male pin

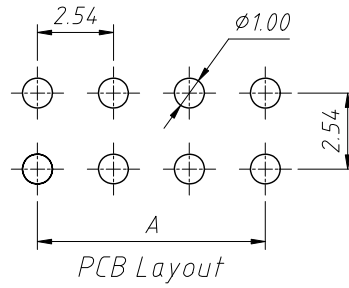
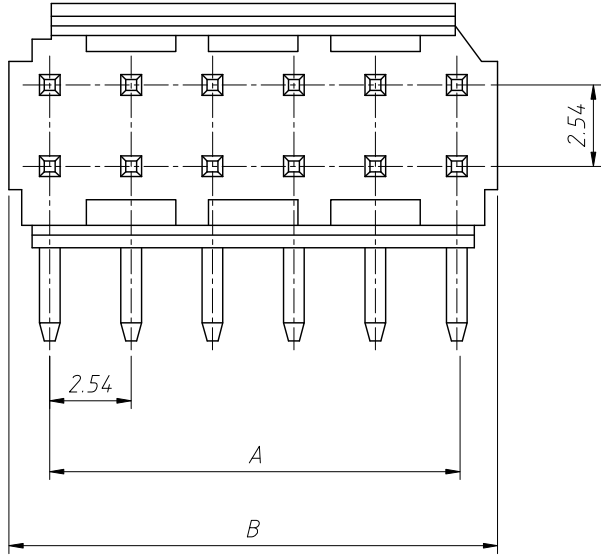
ANGLE TOLERANCE	PROJECTION	Description:
$\pm 3^{\circ}$		2.54mm Pitch Wire To Board Connector
GENERAL TOLERANCE	UNITS	mm
x.x $\pm 0.30$	SHEET SIZE	A4
x.xx $\pm 0.20$	Draw:	Daniel 2021-01-11
x.xxx $\pm 0.10$	Check:	Daniel 2021-01-11



NingBo KLS ELECTRONIC CO.,L TD.



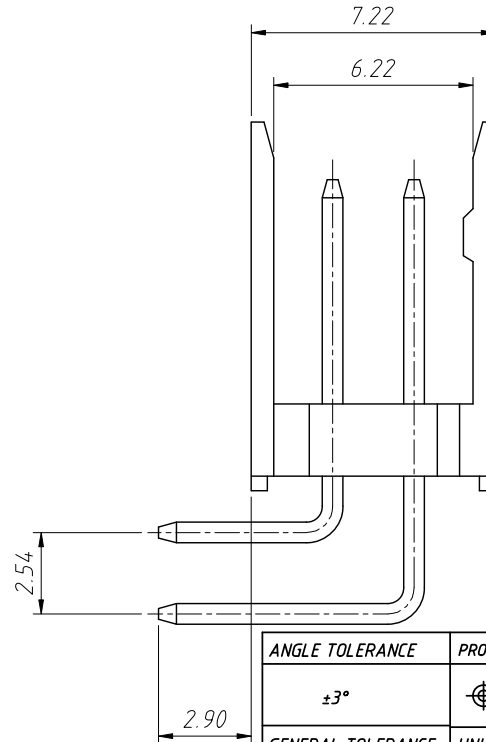
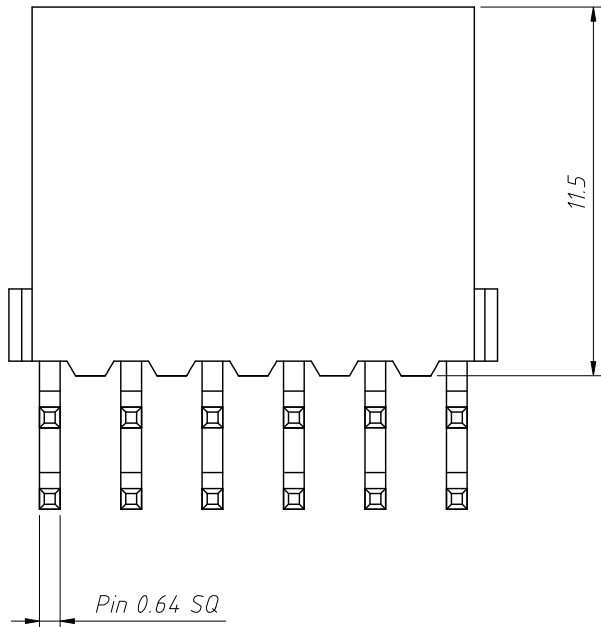
1 RoHS Compliance



Pin	Dimensions(mm)	
	A	B
2x02	2.54	5.08
2x03	5.08	7.62
2x04	7.62	10.16
2x05	10.16	12.70
2x06	12.70	15.24
2x07	15.24	17.78
2x08	17.78	22.86
2x10	22.86	27.94
2x12	27.94	35.56
2x15	35.56	40.64
2x17	40.64	43.18
2x18	43.18	45.72

Material:  
Housing:PA46,UL 94V-0,Blue  
Pin:Brass,Tin plated

Electrical Characteristics:  
Rated Current:3.0AMP  
Voltage rating:250V AC,DC  
Temperature range:-45°C ~ + 105°C  
Insulator Resistance:1000MΩ Min  
Withstanding Voltage:1000V AC/minute  
Contact Resistance:20mΩ Max



Order Information:

L-KLS1-TE-2.54-2-XX-R

L: RoHS  
Pitch:2.54mm  
Row:  
1-Single layer  
2-Double layer  
XX-No. of 04 ~ 36 pins  
Type:  
H / HK-Housing T-Terminal  
S-Straight male pin  
R-Right angle male pin

ANGLE TOLERANCE	PROJECTION	Description:
±3°		2.54mm Pitch Wire To Board Connector
GENERAL TOLERANCE	UNITS	mm
x.x ±0.30	SHEET SIZE	A4
x.xx ±0.20	Draw:	Daniel 2021-01-11
x.xxx ±0.10	Check:	Daniel 2021-01-11



NingBo KLS ELECTRONIC CO.,L TD.