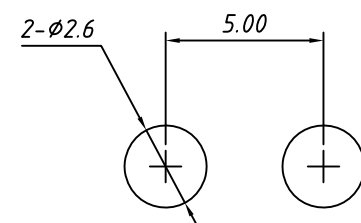


Characteristics:
Voltage Rating: 250V
Current Rating: 15A
Insulation Resistance: 100M Ω Min. at 500VDC
Dielectric Strength : AC 500 V Min.at 60s

Material: Brass C2680, Nickel Plated
Fuse type: Medium Blade Fuse
KLS5-270-xxx

Order Information:
L - KLS5 - 718F -4 N
L: RoHS
Thickness: 4- T=0.4mm
Plated: N-Nickel plated



Recommend Mounting Hole

GENERAL TOLERANCE	PROJECTION		Description:
.X ± 1.00	UNITS	mm	32V Medium Blade Fuse Clip, 6.35x0.6mm KLS P/N: L-KLS5-718F-4N
.X ± 0.50	SCALE	4:1	
.XX ± 0.30	Draw by:	Daniel	
ANGLE TOLERANCE	Check by:	Daniel	NingBo KLS ELECTRONIC CO.,L TD.
$\pm 5^\circ$	Date	2022-09-01	
	SHEET	1 OF 1	